

VOR/DME VIH <b>117.7</b> Chan <b>124</b>	APP CRS <b>056°</b>	Rwy Idg TDZE Apt Elev	<b>5289</b> <b>1137</b> <b>1148</b>
--	------------------------	-----------------------------	---

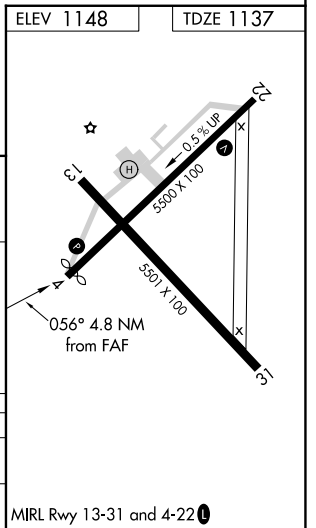
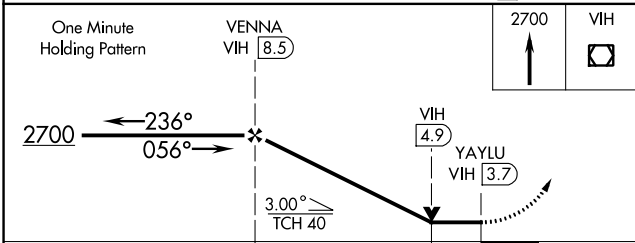
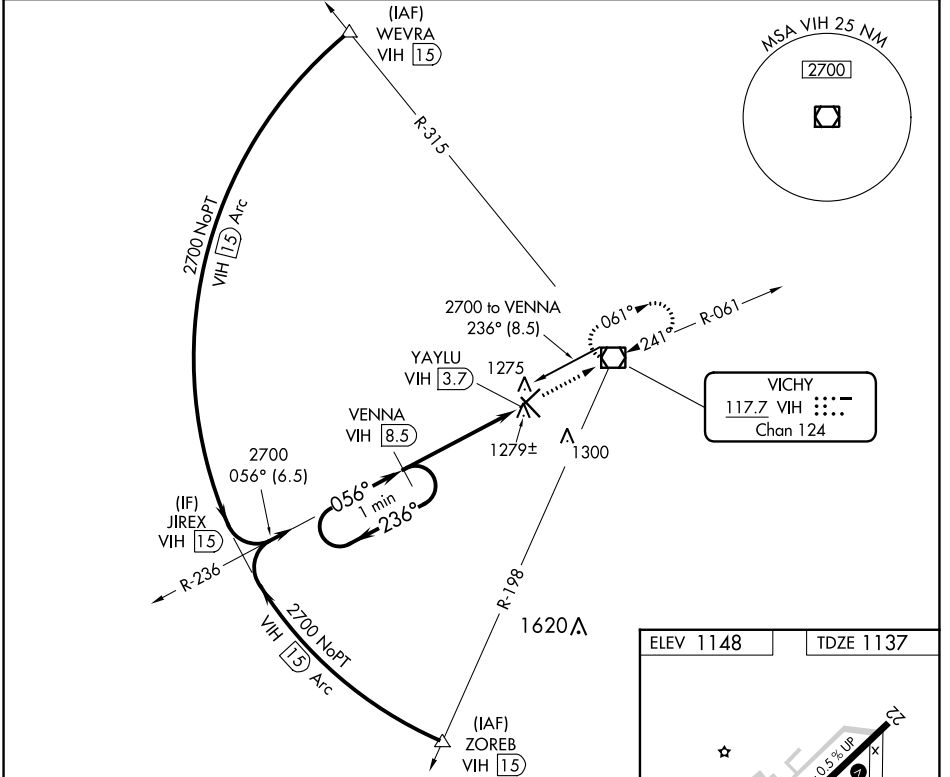
# VOR/DME RWY 4

ROLLA NTL (VIH)

**⚠** Visibility reduction by helicopters NA. When local altimeter setting not received, use Fort Leonard Wood altimeter setting; increase all MDA 80 feet and S-4 Cat D and Circling Cat D visibility ¼ SM. VDP NA with Fort Leonard Wood altimeter setting.

MISSED APPROACH: Climb to 2700 direct VIH VOR/DME and hold.

ASOS <b>119.025</b>	KANSAS CITY CENTER <b>128.35 284.675</b>	UNICOM <b>123.0 (CTAF) 0</b>
------------------------	---	---------------------------------



CATEGORY	A	B	C	D
S-4	1540-1	403 (400-1)	1540-1¼	403 (400-1¼)
CIRCLING	1600-1	452 (500-1)	1600-1½	1740-2 592 (600-2)

NC-3, 11 JUL 2024 to 08 AUG 2024

NC-3, 11 JUL 2024 to 08 AUG 2024