

LEWISTON, IDAHO

AL-515 (FAA)

23334

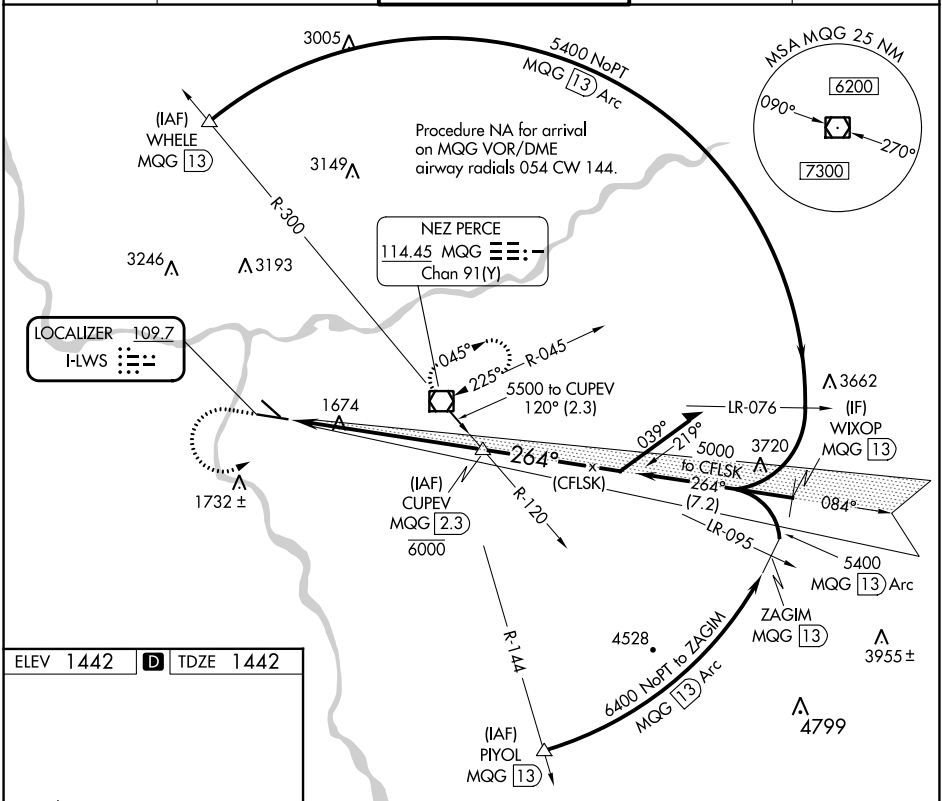
LOC I-LWS 109.7	APP CRS 264°	Rwy Idg TDZE Apt Elev	6511 1442 1442
---------------------------	------------------------	-----------------------------	---

ILS RWY 26

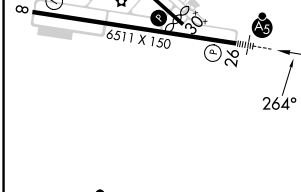
LEWISTON/NEZ PERCE COUNTY (LWS)

When local altimeter setting not received, procedure NA. Autopilot coupled approach NA below 2500.	MALS 	MISSED APPROACH: Climb to 3000 then climbing left turn to 5300 direct MQG VOR/DME and hold, continue climb-in-hold to 5300.
--	----------	---

ASOS 135.575	SEATTLE CENTER 123.95 290.55	LEWISTON TOWER ★ 119.4 (CTAF) 0 318.8	GND CON 121.9	UNICOM 122.95
------------------------	--	---	-------------------------	-------------------------



ELEV 1442		TDZE 1442
-----------	--	-----------

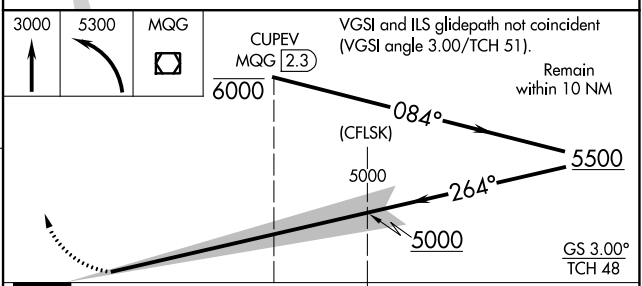


REIL Rwy 8

REIL RWY 12

HIRL Rwy 8-26

MIRL Rwy 12-30



CATEGORY	A	B	C	D
S-ILS 26			1642-½	200 (200-½)

LEWISTON, IDAHO
Amdt 13C 26JUN14

46°22'N-117°01'W

LEWISTON/NEZ PERCE COUNTY (LWS)

ILS RWY 26

NW-1, 11 JUL 2024 to 08 AUG 2024

NW-1, 11 JUL 2024 to 08 AUG 2024