


APP CRS	Rwy Idg	<b>6511</b>
<b>264°</b>	TDZE	<b>1442</b>
	Apt Elev	<b>1442</b>

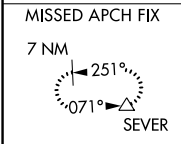
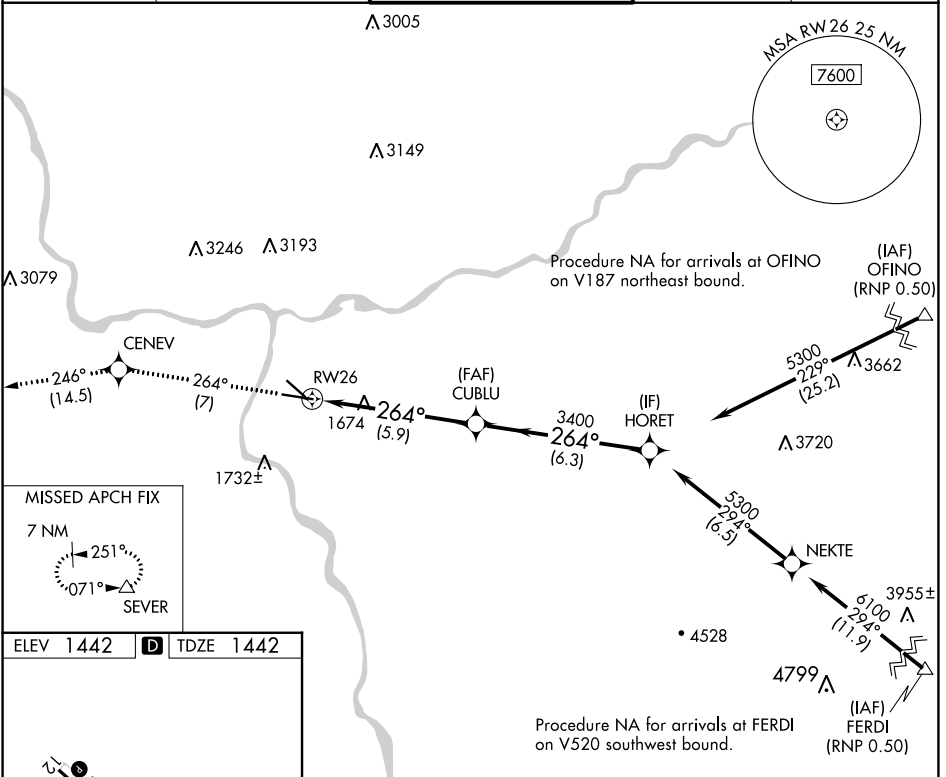
# RNAV (RNP) Z RWY 26

LEWISTON/NEZ PERCE COUNTY (LWS)

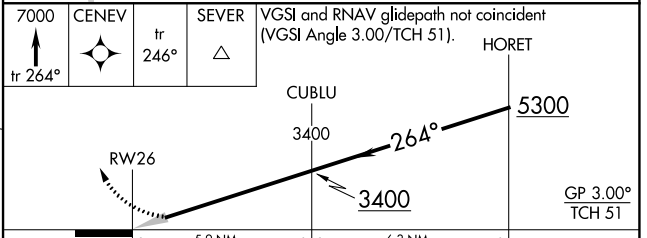
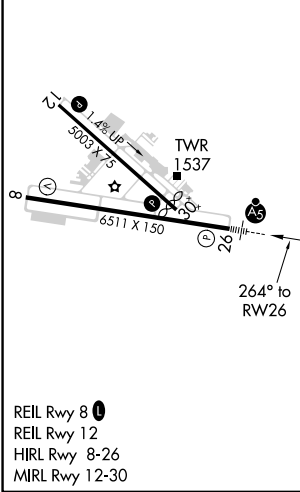
**⚠** For uncompensated Baro-VNAV systems, procedure NA below -16°C (3°F) or above 46°C (115°F). GPS required. For inoperative MALSR, increase RNP 0.30 visibility all Cats to 1 7/8 miles.

**MALSR**  MISSED APPROACH: Climb to 7000 on track 264° to CENEV and on track 246° to SEVER and hold, continue climb-in-hold to 7000.

ASOS <b>135.575</b>	SEATTLE CENTER <b>123.95 290.55</b>	LEWISTON TOWER ★ <b>119.4 (CTAF) 318.8</b>	GND CON <b>121.9</b>	UNICOM <b>122.95</b>
------------------------	--	---	-------------------------	-------------------------



ELEV 1442	<b>D</b>	TDZE 1442
-----------	----------	-----------



CATEGORY	A	B	C	D
RNP 0.20 DA		1806-3/4	364 (400-3/4)	
RNP 0.30 DA		2003-1 1/2	561 (600-1 1/2)	

**AUTHORIZATION REQUIRED**

NW-1, 11 JUL 2024 to 08 AUG 2024

NW-1, 11 JUL 2024 to 08 AUG 2024