

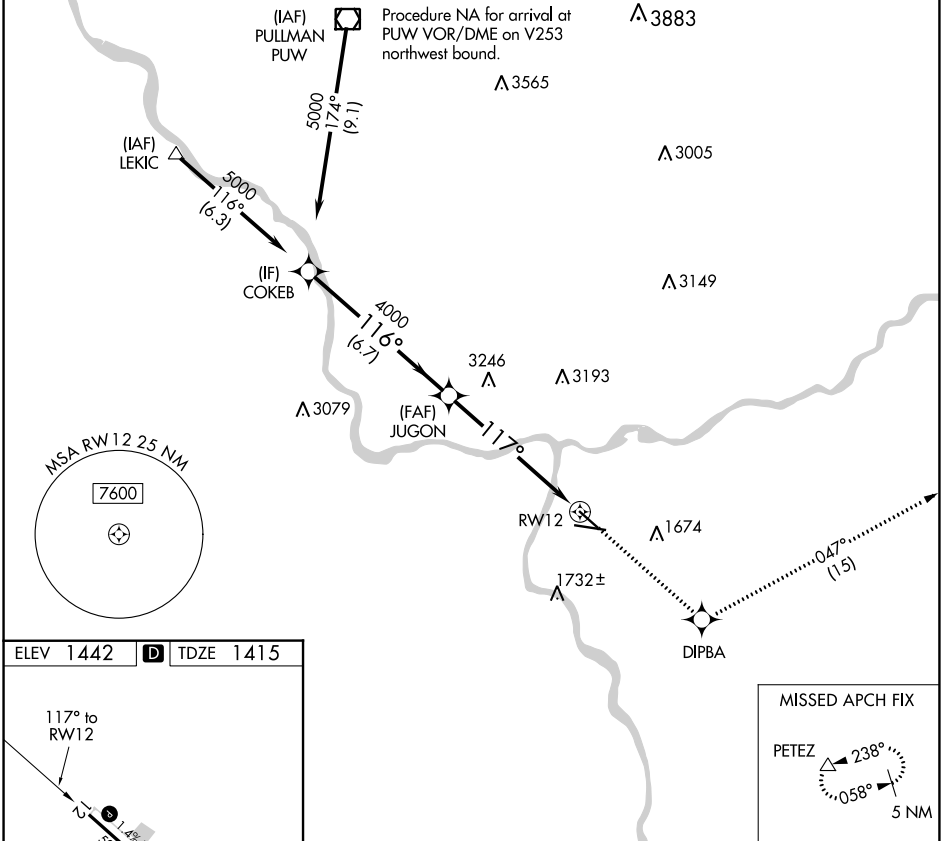
WAAS CH <b>56500</b> <b>W12A</b>	APP CRS <b>117°</b>	Rwy Idg <b>4750</b> TDZE <b>1415</b> Apt Elev <b>1442</b>
--	------------------------	---

# RNAV (GPS) Y RWY 12

LEWISTON/NEZ PERCE COUNTY (LWS)

<b>▼</b> <b>▲</b> NA	When local altimeter setting not received, procedure NA. DME/DME RNP-0.3 NA. Helicopter visibility reduction below ¾ SM NA.	MISSED APPROACH: Climb to 5700 direct DIPBA and on track 047° to PETEZ and hold, continue climb-in-hold to 5700.
-------------------------	--	--

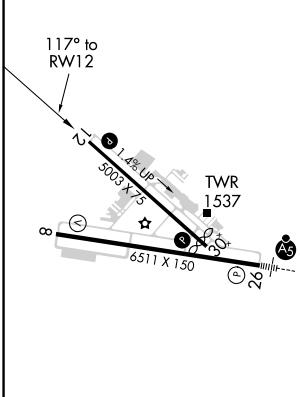
ASOS <b>135.575</b>	SEATTLE CENTER <b>123.95 290.55</b>	LEWISTON TOWER ★ <b>119.4 (CTAF) 0 318.8</b>	GND CON <b>121.9</b>	UNICOM <b>122.95</b>
------------------------	--	---	-------------------------	-------------------------



NW-1, 11 JUL 2024 to 08 AUG 2024

NW-1, 11 JUL 2024 to 08 AUG 2024

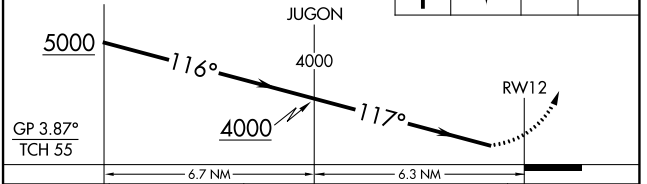
ELEV <b>1442</b>	<b>D</b>	TDZE <b>1415</b>
------------------	----------	------------------



REIL Rwy 8 <b>1</b>
REIL Rwy 12
HIRL Rwy 8-26
MIRL Rwy 12-30

VGSI and RNAV glidepath not coincident (VGSI Angle 3.00/TCH 40).

5700	DIPBA	tr 047°	PETEZ
------	-------	---------	-------



CATEGORY	A	B	C	D
LPV DA	1793-1	378 (400-1)		NA