

VOR/DME HBU 114.9 Chan 96	APP CRS 031°	Rwy Idg TDZE Apt Elev 7680	N/A N/A 7680
---	------------------------	--	---------------------------

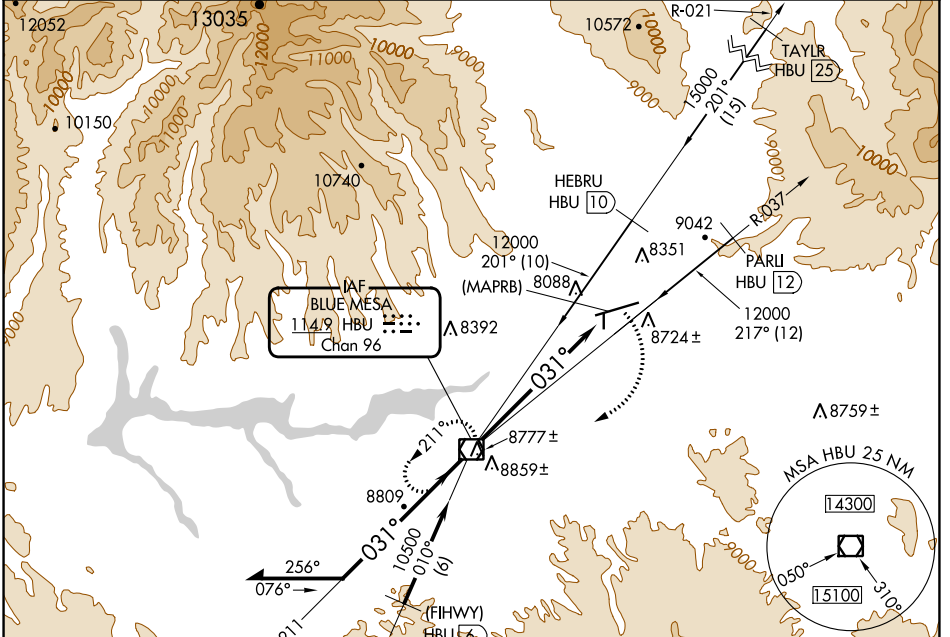
VOR or GPS-A

GUNNISON-CRESTED BUTTE RGNL (GUC)

Procedure NA when airport closed except by prior arrangement.
 Circling NA to Rws 17 and 35.

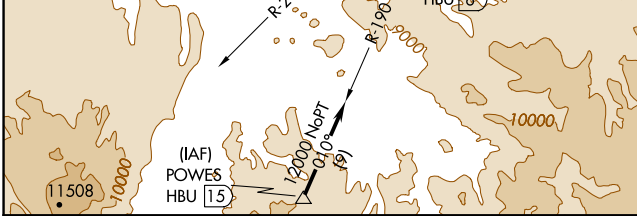
MISSED APPROACH: Climbing right turn to 12000 direct HBU VOR/DME and hold.

AWOS-3PT 135.075	DENVER CENTER 124.5 350.25	UNICOM 122.7 (CTAF)
----------------------------	--------------------------------------	-------------------------------



SW-1, 11 JUL 2024 to 08 AUG 2024

SW-1, 11 JUL 2024 to 08 AUG 2024



ELEV 7680 **D**

Profile view details:

- Slope: 0.3% UP.
- Altitudes: 7773±, 7773, 2981, 35, 9400 X 150.
- Angle: 031°.

HIRL Rwy 6-24
REIL Rwy 24

CATEGORY	FAF to MAP 7 NM				
	A	B	C	D	E
CIRCLING	9260-2 1580 (1600-2)	9340-2 1660 (1700-2)	9540-3 1860 (1900-3)	10040-3 2360 (2400-3)	
	Knots: 60	90	120	150	180
	Min:Sec: 7:00	4:40	3:30	2:48	2:20