

LOC I-CJF <b>110.15</b>	APP CRS <b>308°</b>	Rwy Idg TDZE Apt Elev	<b>7000</b> <b>590</b> <b>598</b>
----------------------------	------------------------	-----------------------------	---

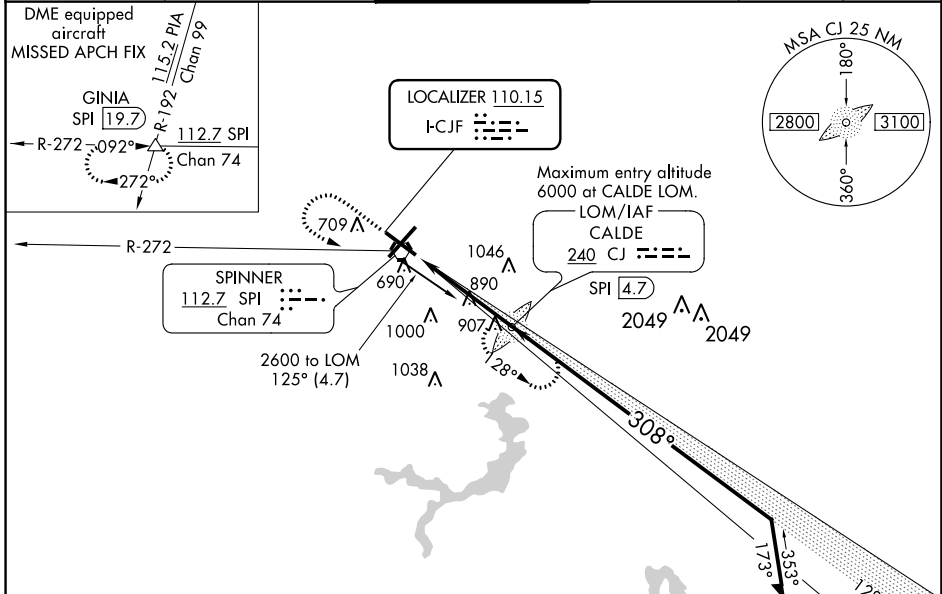
# ILS or LOC RWY 31

ABRAHAM LINCOLN CAPITAL (SPI)

**ADF or DME required.** When local altimeter setting not received, use Logan County altimeter setting: increase DA to 848 feet and all MDA 60 feet, increase Circling Cat C/D/E visibility ¼ SM. For inop MALSRR, increase S-ILS-31 Cat E visibility to ¾ and S-LOC-31 Cat E visibility to 2¼. Autopilot coupled approach NA below 850.

**MALSRR** MISSED APPROACH: Climb to 1700 then climbing left turn to 3100 direct CALDE LOM and hold. (DME equipped aircraft climb to 1700, then climbing left turn to 3200 via SPI R-272 to GINIA INT/SPI 19.7 DME and hold.)

ATIS <b>127.65 270.1</b>	SAINT LOUIS APP CON * <b>126.15 323.0</b>	SPRINGFIELD TOWER * <b>121.3 (CTAF) 257.8</b>	GND CON <b>121.9 348.6</b>	CLNC DEL <b>121.7</b>	UNICOM <b>122.95</b>
-----------------------------	--	--	-------------------------------	--------------------------	-------------------------

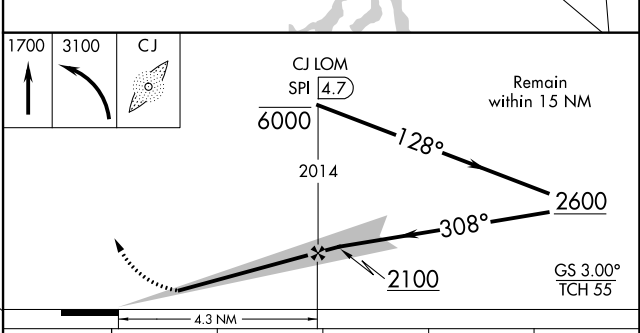
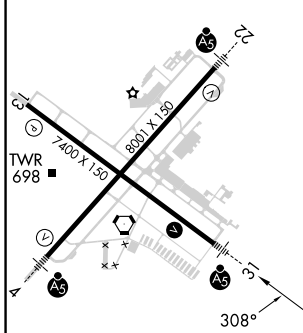


EC-3, 11 JUL 2024 to 08 AUG 2024

EC-3, 11 JUL 2024 to 08 AUG 2024

ELEV 598	<b>D</b>	TDZE 590
----------	----------	----------

## ADF or DME REQUIRED



CATEGORY	A	B	C	D	E
S-ILS 31	790-½ 200 (200-½)				
S-LOC 31	1200-½ 610 (700-½)	1200-1¼ 610 (700-1¼)	1200-1½ 610 (700-1½)	1200-1¾ 610 (700-1¾)	1200-1⅞ 610 (700-1⅞)
CIRCLING	1200-1 602 (700-1)	1360-2¼ 762 (800-2¼)	1380-2½ 782 (800-2½)	1380-2¾ 782 (800-2¾)	1380-2⅞ 782 (800-2⅞)