

WAAS CH <b>99616</b> <b>W13A</b>	APP CRS <b>128°</b>	Rwy Idg TDZE Apt Elev	<b>7217</b> <b>592</b> <b>598</b>
--	------------------------	-----------------------------	---

# RNAV (GPS) RWY 13

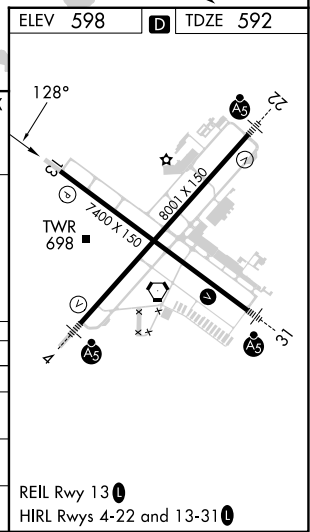
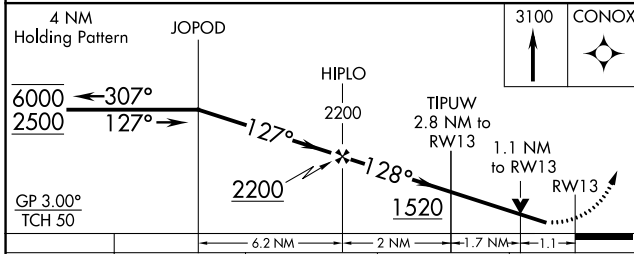
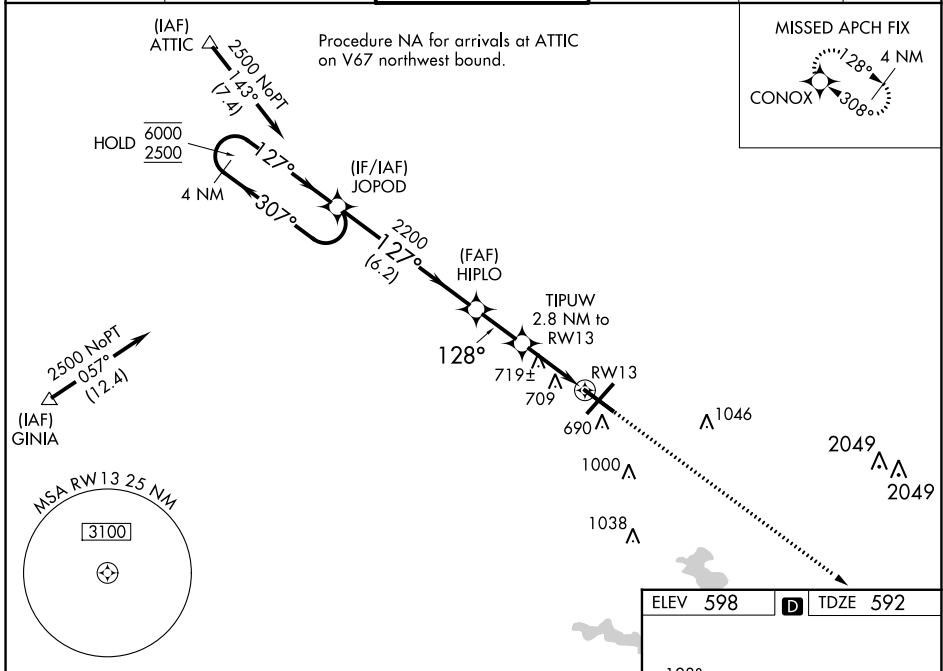
ABRAHAM LINCOLN CAPITAL (SPI)

RNP APCH - GPS.

**ASR** Baro-VNAV and VDP NA when using Lincoln altimeter setting. For uncompensated Baro-VNAV systems, LNAV/VNAV NA below -16°C or above 54°C. When local altimeter setting not received, use Lincoln altimeter setting: increase LPV DA to 932 feet and all visibilities  $\frac{1}{8}$  SM; increase LNAV/VNAV DA to 1068 feet and all visibilities  $\frac{1}{4}$  SM; increase all MDAs 60 feet and LNAV visibility Cat C/D  $\frac{1}{4}$  SM, and Circling visibility Cat C/D  $\frac{1}{4}$  SM. Rwy 13 helicopter visibility reduction below  $\frac{3}{4}$  SM NA.

**MISSED APPROACH:**  
Climb to 3100 direct CONOX and hold.

ATIS <b>127.65 270.1</b>	SAINT LOUIS APP CON * <b>126.15 323.0</b>	SPRINGFIELD TOWER * <b>121.3 (CTAF) 257.8</b>	GND CON <b>121.9 348.6</b>	CLNC DEL <b>121.7</b>	UNICOM <b>122.95</b>
-----------------------------	--	--	-------------------------------	--------------------------	-------------------------



CATEGORY	A	B	C	D
LPV DA		875- $\frac{7}{8}$	283 (300- $\frac{7}{8}$ )	
LNAV/VNAV DA		1011-1 $\frac{1}{8}$	419 (500-1 $\frac{1}{8}$ )	
LNAV MDA	980-1	388 (400-1)	980-1 $\frac{1}{8}$	388 (400-1 $\frac{1}{8}$ )
CIRCLING	1040-1 442 (500-1)	1100-1 502 (600-1)	1360-2 $\frac{1}{4}$ 762 (800-2 $\frac{1}{4}$ )	1380-2 $\frac{1}{2}$ 782 (800-2 $\frac{1}{2}$ )

EC-3, 11 JUL 2024 to 08 AUG 2024

EC-3, 11 JUL 2024 to 08 AUG 2024