


LOC/DME I-BPT <b>110.15</b> Chan <b>38(Y)</b>	APP CRS <b>120°</b>	Rwy Idg TDZE <b>15</b> Apt Elev <b>15</b>	<b>6508</b>
---	------------------------	---	-------------

# ILS or LOC RWY 12

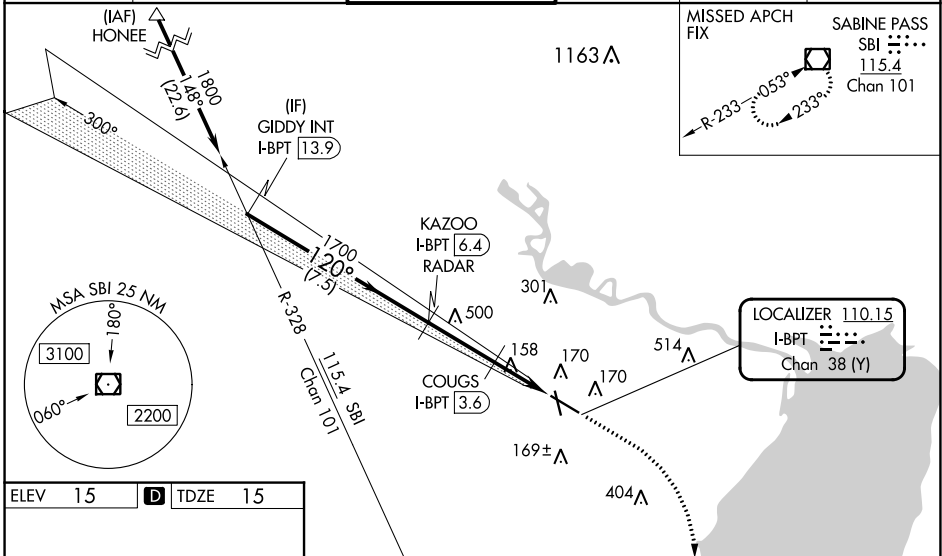
JACK BROOKS RGNL (BPT)

DME or RADAR required.

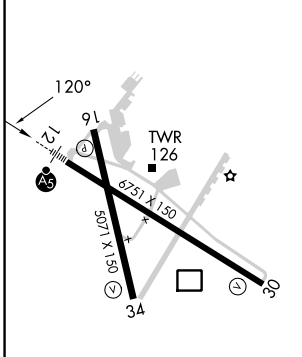
**⚠** Helicopter visibility reduction below RVR 4000 NA. Inop table does not apply to S-ILS 12.  
**⚠** When local altimeter setting not received use Orange County altimeter setting: increase S-ILS 12 DA to 297 feet; increase all MDAs 40 feet. COUGS fix minimums: increase S-LOC 12 visibility Cat C/D/E to RVR 5000. For inop ALS, increase S-LOC visibility Cat A to RVR 5500 and Cat C/D/E to 2½ SM. COUGS fix minimums: increase S-LOC visibility Cat A/B to RVR 5500 and Cat E to 1½ SM. For inop ALS when using Orange County altimeter setting, increase S-ILS 12 all Cats visibility to RVR 4500, S-LOC 12 visibility Cat A to RVR 5500 and Cat C/D/E to 2½ SM. COUGS fix minimums: increase S-LOC 12 visibility Cat A/B to RVR 5500 and Cat C/D/E to 1½ SM. VDP NA when using Orange County altimeter setting.  
 \*RVR 1800 authorized with use of FD or AP or HUD to DA, NA when using Orange County altimeter setting.

MALSRL  
 MISSED APPROACH: Climb to 500 then climbing right turn to 3000 direct SBI VOR/DME and hold.




ATIS <b>126.3</b>	HOUSTON APP CON <b>121.3 377.1</b>	BEAUMONT TOWER* <b>119.5 (CTAF) 0</b>	GND CON <b>124.85</b>	CLNC DEL <b>118.3</b>	UNICOM <b>122.95</b>
----------------------	---------------------------------------	--	--------------------------	--------------------------	-------------------------



ELEV 15	<b>D</b>	TDZE 15
---------	----------	---------



Use I-BPT DME when on the localizer course.

	500	3000	SBI		
					
GIDDY INT I-BPT 13.9	KAZOO I-BPT 6.4 RADAR	COUGS I-BPT 3.6	I-BPT 2.5		
1800	1700	820	I-BPT 1.3		
GS 3.00° TCH 52	7.5 NM	2.8 NM	1.1 NM		
1.2 NM					
CATEGORY	A	B	C	D	E
S-ILS 12*	265/40 250 (300-¾)				
S-LOC 12	820/40	805 (900-¾)	820-1½	805 (900-1½)	
COUGS FIX MINIMUMS (DME REQUIRED)					
S-LOC 12	460/40 445 (500-¾)		460/45 445 (500-¾)		

FAF to MAP 5.1 NM					
Knots	60	90	120	150	180
Min:Sec	5:06	3:24	2:33	2:02	1:42

SC-5, 11 JUL 2024 to 08 AUG 2024

SC-5, 11 JUL 2024 to 08 AUG 2024