

WAAS CH <b>82316</b>	APP CRS <b>W16A</b>	Rwy Idg TDZE <b>15</b>	<b>5070</b>
	<b>165°</b>	Apt Elev <b>15</b>	

# RNAV (GPS) RWY 16

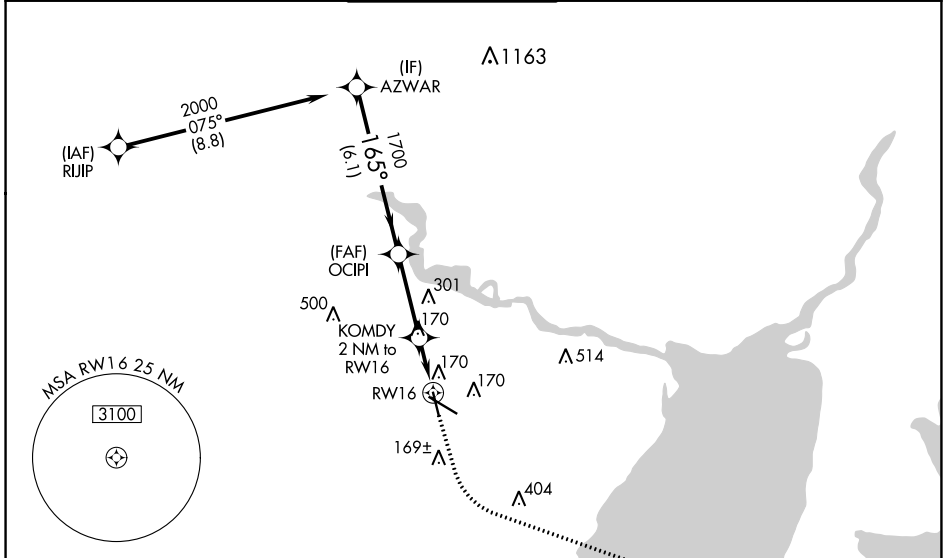
JACK BROOKS RGNL (BPT)

RNP APCH - GPS.

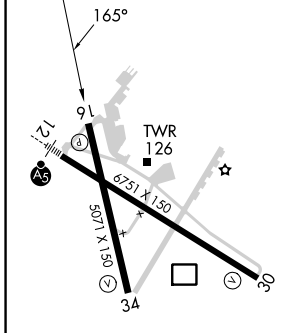
▼ For uncompensated Baro-VNAV systems, LNAV/VNAV NA below -4°C or above 54°C.  
 ▲ Baro-VNAV and VDP NA when using Orange County altimeter setting. Rwy 16 helicopter visibility reduction below 3/4 SM NA. When local altimeter setting not received, use Orange County altimeter setting: increase LPV DA to 307 feet and all visibilities 1/2 SM; increase LNAV/VNAV DA to 363 feet and all visibilities 1/2 SM; increase all MDAs 40 feet and LNAV visibility Cat C/D/E 1/4 SM.

MISSED APPROACH: Climb to 500 then climbing left turn to 3000 direct MARSAs and hold.

ATIS <b>126.3</b>	HOUSTON APP CON <b>121.3 377.1</b>	BEAUMONT TOWER * <b>119.5 (CTAF) 0</b>	GND CON <b>124.85</b>	CLNC DEL <b>118.3</b>	UNICOM <b>122.95</b>
----------------------	---------------------------------------	---	--------------------------	--------------------------	-------------------------



ELEV <b>15</b>	<b>D</b>	TDZE <b>15</b>
----------------	----------	----------------



REIL Rwy 16, 30 and 34 <b>0</b>
HIRL Rwy 12-30, 16-34 <b>0</b>

	500	3000	MARSA		
	↑	↷	△		
AZWAR	OCIPI	KOMDY	MARSAs		
2000	1700	2 NM to RWY 16	1.1 NM to RWY 16		
GP 3.00°	1700	700			
TCH 53					
	6.1 NM	3.1 NM	0.9 NM 1.1 NM		
CATEGORY	A	B	C	D	E
LPV DA		275-3/4	260 (300-3/4)		
LNAV/VNAV DA		331-7/8	316 (400-7/8)		
LNAV MDA	420-1	405 (500-1)	420-1 1/8	405 (500-1 1/8)	

SC-5, 11 JUL 2024 to 08 AUG 2024

SC-5, 11 JUL 2024 to 08 AUG 2024