

WAAS CH <b>69611</b> <b>W17A</b>	APP CRS <b>168°</b>	Rwy ldg TDZE Apt Elev	<b>5000</b> <b>1135</b> <b>1166</b>
--	------------------------	-----------------------------	---

# RNAV (GPS) RWY 17

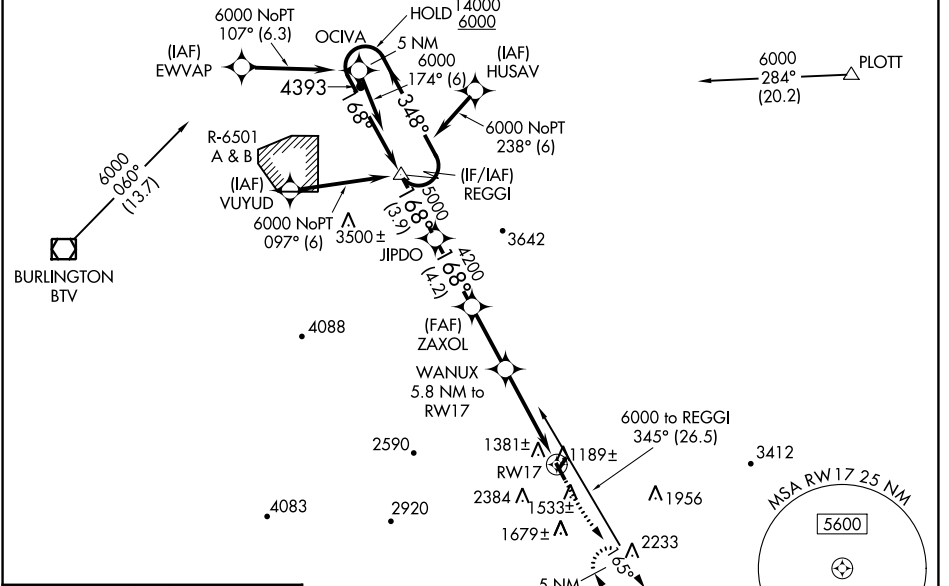
EDWARD F KNAPP STATE (MPV)

RNP APCH - GPS.  
RADAR required for procedure entry at VUYUD.

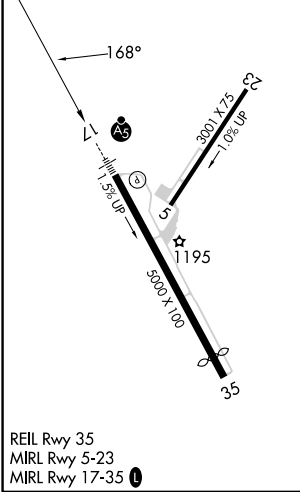
**⚠** Rwy 17 helicopter visibility reduction below 1 SM NA. Inop table does not apply to LPV all Cats and LNAV Cats A and B. Baro-VNAV NA. When local altimeter setting not received, procedure NA. Straight-in Rwy 17 NA at night, Circling Rwy 5, 17, 35 NA at night. For inop ALS, increase LNAV/VNAV all Cats visibility to 1 1/8 SM.

MALSR  
**A5**  
MISSED APPROACH:  
Climb to 1720 then  
climb to 5200 direct  
MPV VOR/DME  
and hold, continue  
climb-in-hold to 5200.

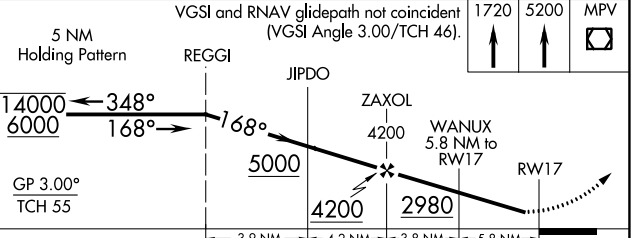
ASOS <b>132.675</b>	BOSTON CENTER <b>135.7 282.2</b>	UNICOM <b>122.8 (CTAF)</b>
------------------------	-------------------------------------	-------------------------------



ELEV 1166	TDZE 1135
-----------	-----------



Procedure NA for arrival on MPV  
VOR/DME airway radials 315 CW 037.



CATEGORY	A	B	C	D
LPV DA		1509-1	374 (400-1)	
LNAV/ VNAV DA		1624-1	489 (500-1)	
LNAV MDA	1680-1	545 (600-1)	1680-1 1/8	545 (600-1 1/8)
<b>C</b> CIRCLING	1980-1 1/4	814 (900-1 1/4)	2700-3 1534 (1600-3)	2920-3 1754 (1800-3)

NE-1, 11 JUL 2024 to 08 AUG 2024

NE-1, 11 JUL 2024 to 08 AUG 2024