

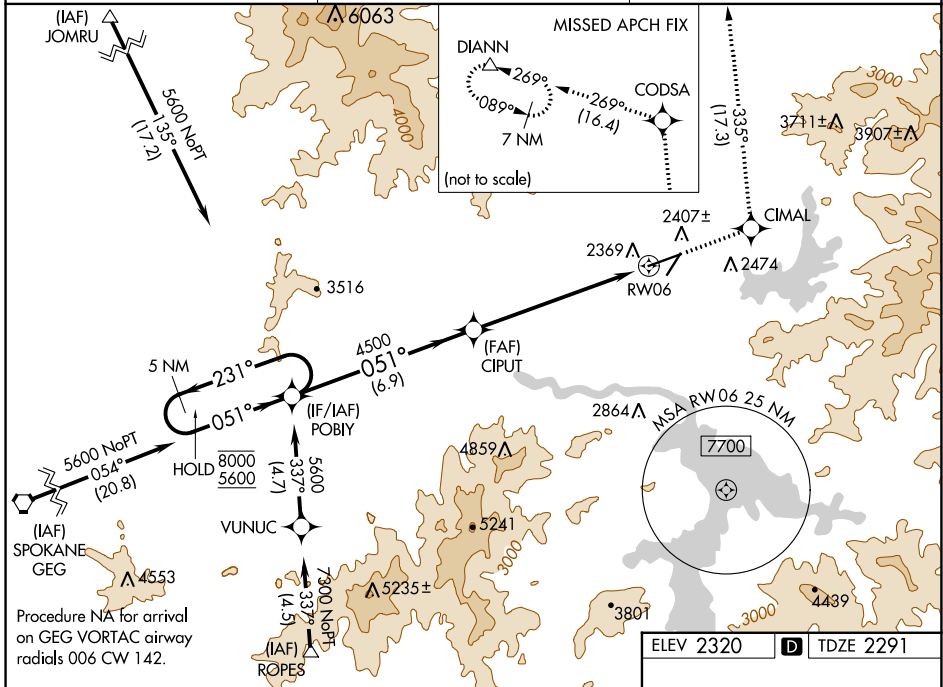
WAAS CH 70608 W06A	APP CRS 051°	Rwy Idg 7400 TDZE 2291 Apt Elev 2320
--	------------------------	---

RNAV (GPS) RWY 6

COEUR D'ALENE/PAPPY BOYINGTON FLD (COE)

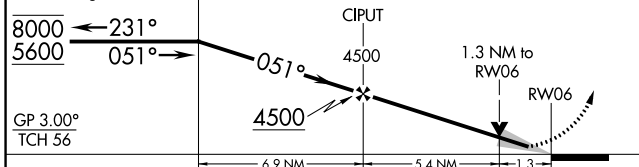
RNP APCH - GPS.	MALSR	MISSED APPROACH: Climb to 7000 direct CIMAL and on track 335° to CODSA and on track 269° to DIANN and hold.
<p>⚠ Circling Rwy 2 NA at night. For uncompensated Baro-VNAV systems, LNAV/VNAV NA below -21°C or above 53°C.</p> <p>Circling NA for Cat D southeast of Rwy 6-24.</p>		

AWOS-3PT 135.075	SPOKANE APP CON 132.1 263.0	UNICOM 122.8 (CTAF)
----------------------------	---------------------------------------	-------------------------------

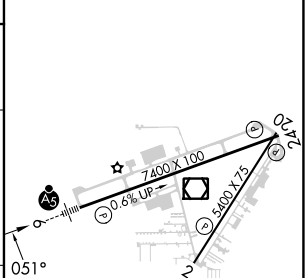


Procedure NA for arrival on GEG VORTAC airway radials 006 CW 142.

7000	CIMAL	tr 335°	CODSA	tr 269°	DIANN
------	-------	---------	-------	---------	-------



ELEV 2320	D	TDZE 2291
-----------	----------	-----------



CATEGORY	A	B	C	D
LPV DA		2491-1/2	200 (200-1/2)	
LNAV/VNAV DA		2654-3/4	363 (400-3/4)	
LNAV MDA	2740-1/2	449 (500-1/2)	2740-1	449 (500-1)
CIRCLING	2740-1 420 (500-1)	2880-1 560 (600-1)	3020-2 700 (700-2)	3180-2 3/4 860 (900-2 3/4)

MIRL Rwy 2-20 **ⓘ**
 HIRL Rwy 6-24 **ⓘ**
 REIL Rws 2 and 24 **ⓘ**

NW-1, 11 JUL 2024 to 08 AUG 2024

NW-1, 11 JUL 2024 to 08 AUG 2024