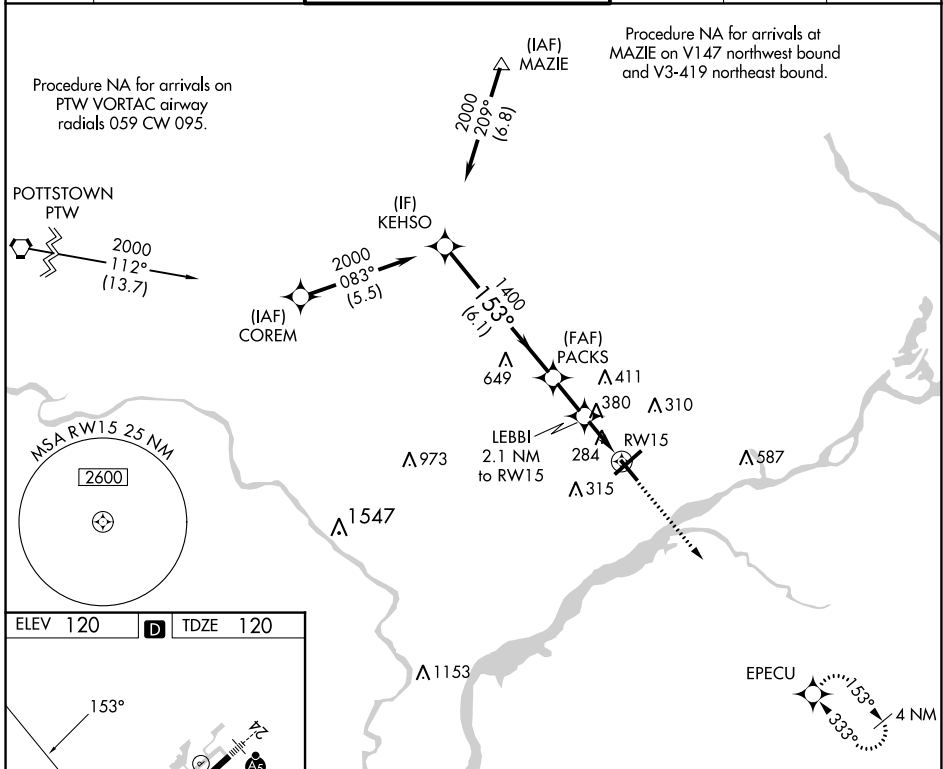


APP CRS	Rwy Idg	<b>4999</b>
<b>153°</b>	TDZE	<b>120</b>
	Apt Elev	<b>120</b>

# RNAV (GPS) RWY 15

NORtheast PHILADELPHIA (PNE)

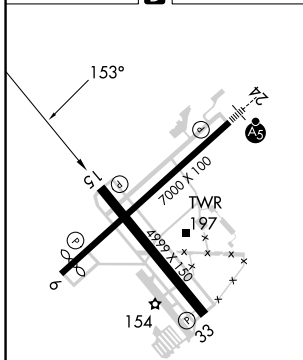
<p><b>⚠</b> When local altimeter setting not received, use Philadelphia Intl altimeter setting: increase all MDAs 60 feet and LNAV visibility Cat C/D ¼ SM and Circling visibility Cat C/D ¼ SM. DME/DME RNP-0.3 NA.</p>		<p>MISSED APPROACH: Climb to 2000 direct EPECU and hold.</p>			
<p>ATIS <b>121.15</b></p>	<p>PHILADELPHIA APP CON <b>123.8 291.7</b></p>	<p>NORtheast PHILADELPHIA TOWER * <b>126.9 (CTAF) 278.8</b></p>	<p>GND CON <b>121.7</b></p>	<p>CLNC DEL <b>127.25</b></p>	<p>UNICOM <b>122.95</b></p>



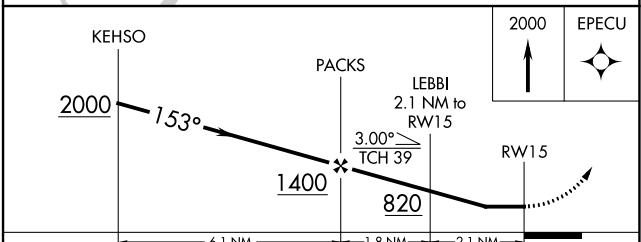
NE-4, 11 JUL 2024 to 08 AUG 2024

NE-4, 11 JUL 2024 to 08 AUG 2024

ELEV	120	<b>D</b>	TDZE	120
------	-----	----------	------	-----



HIRL Rwy 6-24  
MIRL Rwy 15-33  
REIL Rwy 6, 15 and 33



CATEGORY	A	B	C	D
LNAV MDA	660-1	540 (600-1)	660-1½	540 (600-1½)
CIRCLING	700-1	580 (600-1)	720-1½ 600 (600-1½)	780-2 660 (700-2)