

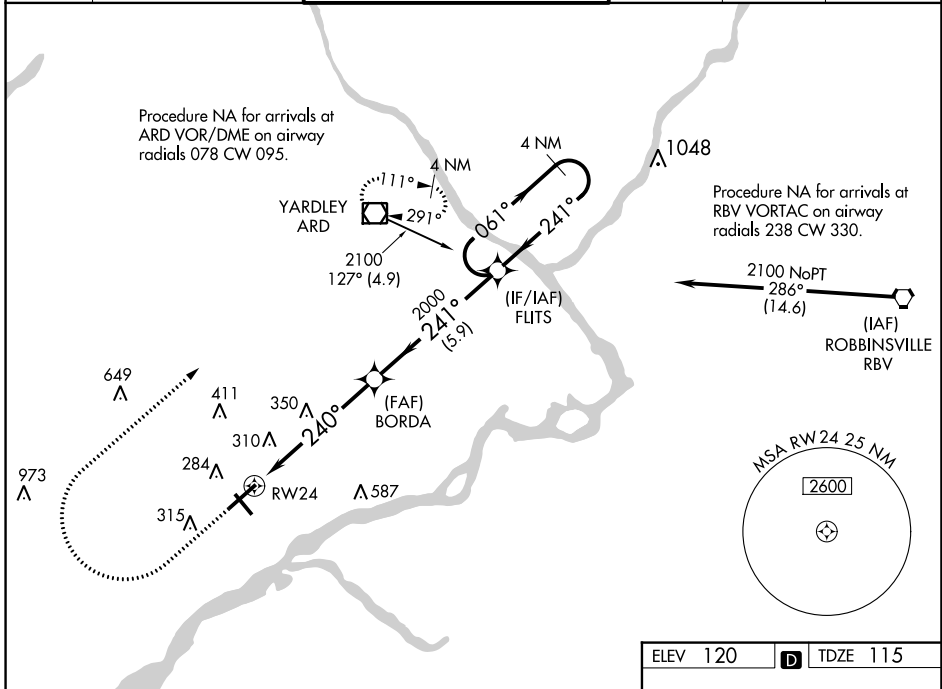
WAAS CH 45504 W24A	APP CRS 240°	Rwy Idg TDZE Apt Elev	6102 115 120
--	------------------------	-----------------------------	---

RNAV (GPS) RWY 24

NORTHEAST PHILADELPHIA (PNE)

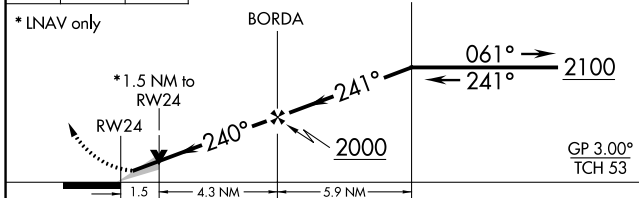
	For uncompensated Baro-VNAV systems, LNAV/VNAV NA below -12°C (11°F) or above 54°C (130°F). DME/DME RNP-0.3 NA.		MISSED APPROACH: Climb to 900 then climbing right turn to 3000 direct ARD VOR/DME and hold.
--	---	--	---

ATIS 121.15	PHILADELPHIA APP CON 123.8 291.7	NORTHEAST PHILADELPHIA TOWER ★ 126.9 (CTAF) 278.8	GND CON 121.7	CLNC DEL 127.25	UNICOM 122.95
-----------------------	--	---	-------------------------	---------------------------	-------------------------



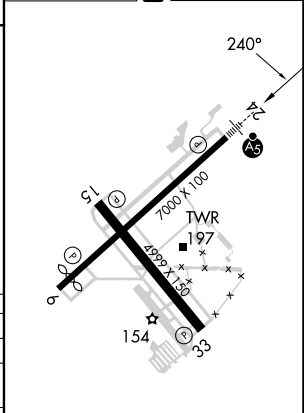
NE-4, 11 JUL 2024 to 08 AUG 2024

NE-4, 11 JUL 2024 to 08 AUG 2024



CATEGORY	A	B	C	D
LPV DA		315-1/2	200 (200-1/2)	
LNAV/VNAV DA		560-7/8	445 (500-7/8)	
LNAV MDA	640-1/2 525 (600-1/2)		640-1 525 (600-1)	
CIRCLING	700-1 580 (600-1)		720-1 1/2 600 (600-1 1/2)	780-2 660 (700-2)

ELEV 120		TDZE 115
----------	--	----------



HIRL Rwy 6-24
MIRL Rwy 15-33
REIL Rwy 6, 15 and 33