

LOC/DME I-DLS 109.35 Chan 30(Y)	APP CRS 238°	Rwy Idg TDZE Apt Elev	4451 243 247
--	------------------------	-----------------------------	---

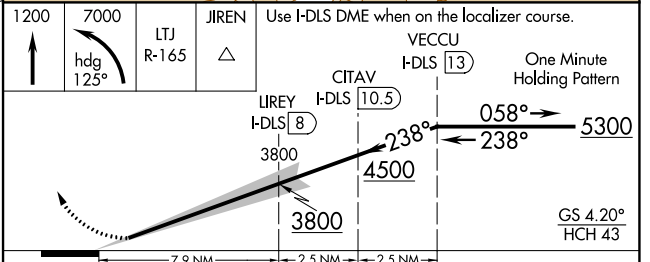
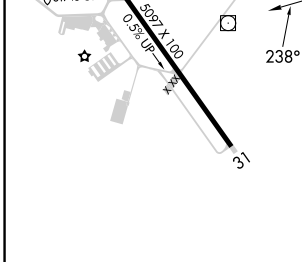
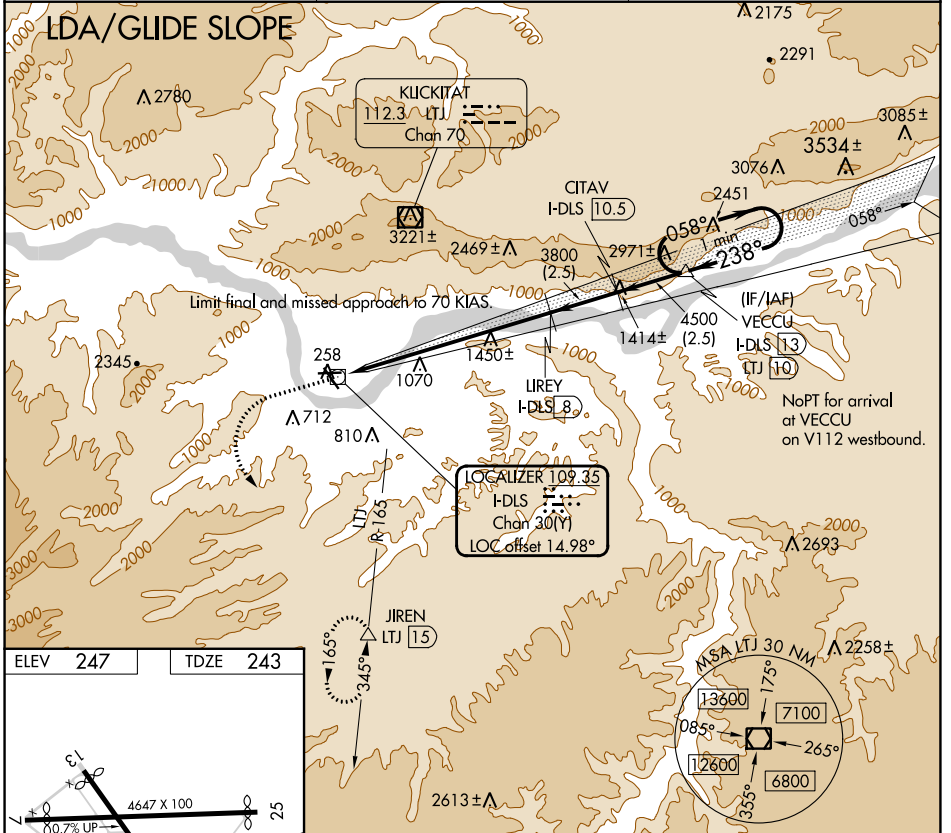
COPTER LDA/DME RWY 25

COLUMBIA GORGE RGNL/THE DALLES MUNI(DLS)

NA When local altimeter setting not received, procedure NA.
 Glide slope provided by standard glide slope equipment.

MISSED APPROACH: Climb to 1200 then climbing left turn to 7000 on heading 125° and LTJ VOR/DME R-165 to JIREN/LTJ 1.5 DME and hold, continue climb-in-hold to 7000.

ASOS 135.175	SEATTLE CENTER 119.65 257.6	UNICOM 123.0 (CTAF) 0
------------------------	---------------------------------------	---------------------------------



REIL Rwy 31 0	MIRL Rwy 7-25 and 13-31 0
CATEGORY	COPTER
H-25	783-1½ 540 (600-1½)

NW-1, 11 JUL 2024 to 08 AUG 2024

NW-1, 11 JUL 2024 to 08 AUG 2024