

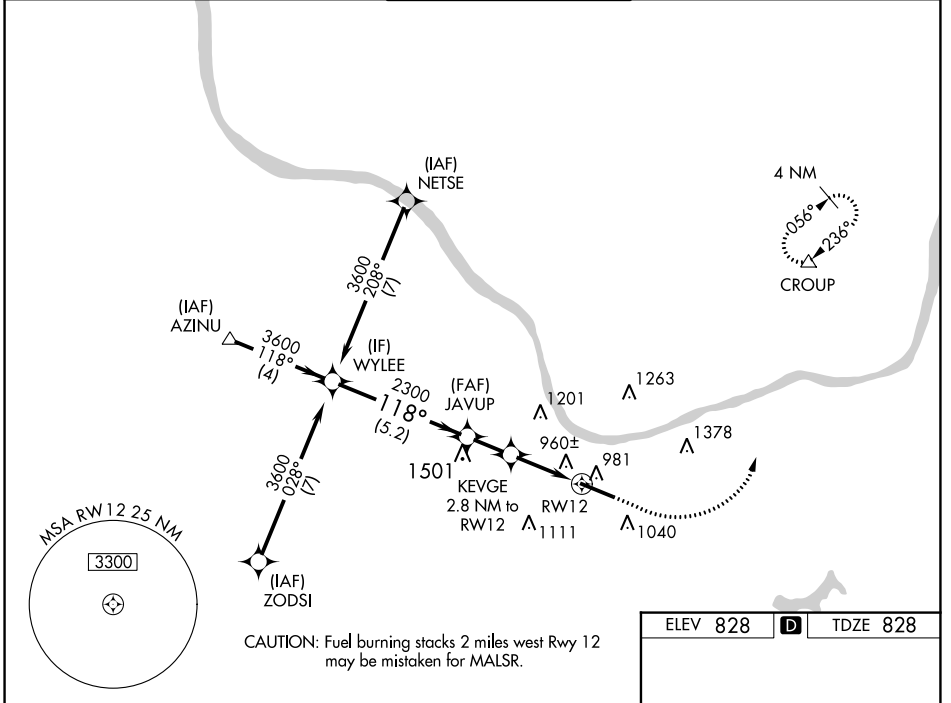
WAAS CH 45699 W12A	APP CRS 118°	Rwy Idg TDZE Apt Elev	6516 828 828
--	------------------------	-----------------------------	---

RNAV (GPS) RWY 12

TRI-STATE/MILTON J FERGUSON FLD (HTS)

RNP APCH - GPS.	MALSR	MISSED APPROACH: Climb to 1700 then climbing left turn to 4000 direct CROUP and hold, continue to climb-in-hold to 4000.
<p>⚠ For uncompensated Baro-VNAV systems, LNAV/VNAV NA below -14°C or above 54°C.</p> <p>⚠ For inop ALS, increase LNAV/VNAV all Cats visibility to RVR 4500.</p> <p>* RVR 1800 authorized with use of FD or AP or HUD to DA.</p>		

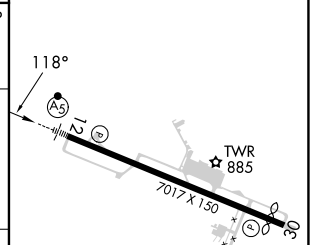
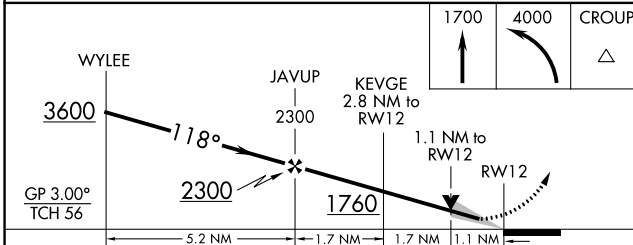
ATIS 125.2	HUNTINGTON APP CON 119.75 270.1	HUNTINGTON TOWER 118.5 270.1	GND CON 121.9	CLNC DEL 118.05
----------------------	---	--	-------------------------	---------------------------



NE-4, 11 JUL 2024 to 08 AUG 2024

NE-4, 11 JUL 2024 to 08 AUG 2024

ELEV 828	D	TDZE 828
----------	----------	----------



CATEGORY	A	B	C	D
LPV DA*		1028/24	200 (200-1/2)	
LNAV/VNAV DA		1121/24	293 (300-1/2)	
LNAV MDA	1220/24	392 (400-1/2)	1220/35	392 (400-5/8)
CIRCLING	1300-1 472 (500-1)	1380-1 552 (600-1)	1520-2 692 (700-2)	1740-3 912 (1000-3)

REIL Rwy 30
HIRL Rwy 12-30