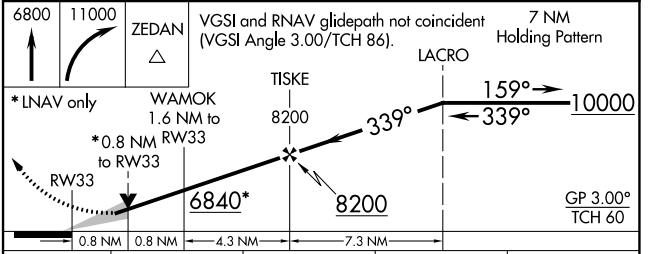
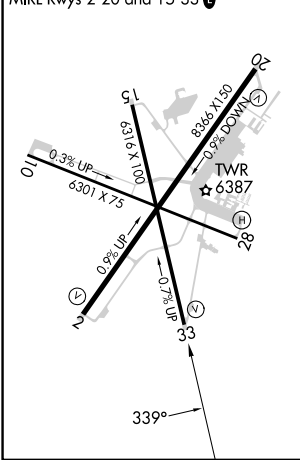
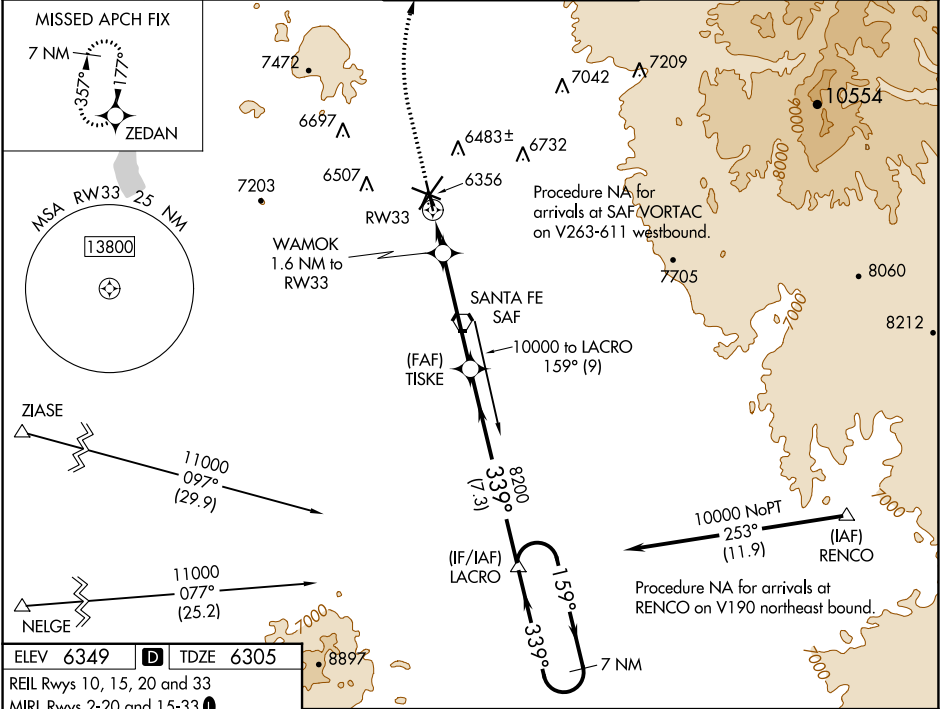


WAAS CH <b>69539</b> <b>W33A</b>	APP CRS <b>339°</b>	Rwy Idg TDZE <b>6316</b> 6305 Apt Elev <b>6349</b>
--	------------------------	---

# RNAV (GPS) RWY 33

SANTA FE RGNL (SAF)

<p><b>▽</b> For uncompensated Baro-VNAV systems, LNAV/VNAV NA below -18°C (0°F) or above 43°C (110°F). <b>▲</b> DME/DME RNP-0.3 NA.</p>		<p>MISSED APPROACH: Climb to 6800 then climbing right turn to 11000 direct ZEDAN and hold.</p>	
ATIS <b>128.55</b>	ALBUQUERQUE CENTER <b>132.8 346.35</b>	SANTA FE TOWER * <b>119.5 (CTAF) 239.3</b>	GND CON <b>121.7</b>
		UNICOM <b>122.95</b>	



CATEGORY	A	B	C	D
LPV DA		6555-78	250 (300-78)	
LNAV/VNAV DA		6555-78	250 (300-78)	
LNAV MDA	6620-1	315 (300-1)	6620-78	315 (300-78)
<b>C</b> CIRCLING	6800-1 451 (500-1)	6920-1 571 (600-1)	7340-3 991 (1000-3)	7660-3 1311 (1400-3)

SW-1, 11 JUL 2024 to 08 AUG 2024

SW-1, 11 JUL 2024 to 08 AUG 2024