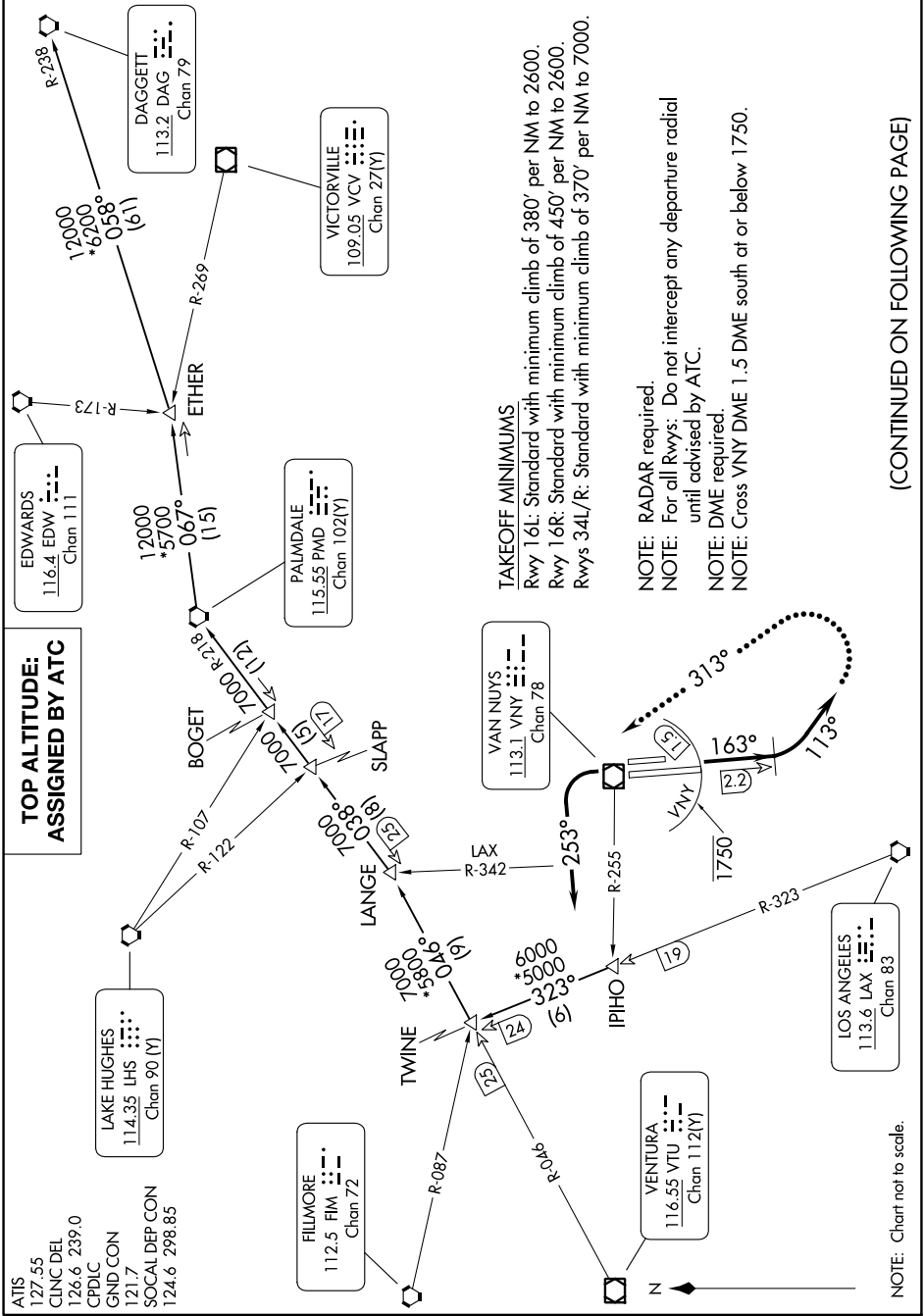


# NEWHALL ONE DEPARTURE

AL-552 (FAA)

VAN NUYS (VNY)  
VAN NUYS, CALIFORNIA

SW-3, 11 JUL 2024 to 08 AUG 2024



**TAKEOFF MINIMUMS**  
 Rwy 16L: Standard with minimum climb of 380' per NM to 2600.  
 Rwy 16R: Standard with minimum climb of 450' per NM to 2600.  
 Rwys 34L/R: Standard with minimum climb of 370' per NM to 7000.

**NOTE: RADAR required.**  
**NOTE: For all Rwys: Do not intercept any departure radial until advised by ATC.**  
**NOTE: DME required.**  
**NOTE: Cross VNY DME 1.5 DME south of or below 1750.**

(CONTINUED ON FOLLOWING PAGE)

NOTE: Chart not to scale.

# NEWHALL ONE DEPARTURE

SW-3, 11 JUL 2024 to 08 AUG 2024