

SPOKANE, WASHINGTON

# ILS or LOC RWY 23

LOC I-SKA <b>110.3</b>	APCH CRS <b>231°</b>	Rwy Idg <b>13,899</b> TDZE <b>2423</b> Arprt Elev <b>2462</b>	AL-553 [USAF]	FAIRCHILD AFB (KSKA)
---------------------------	-------------------------	---	---------------	----------------------

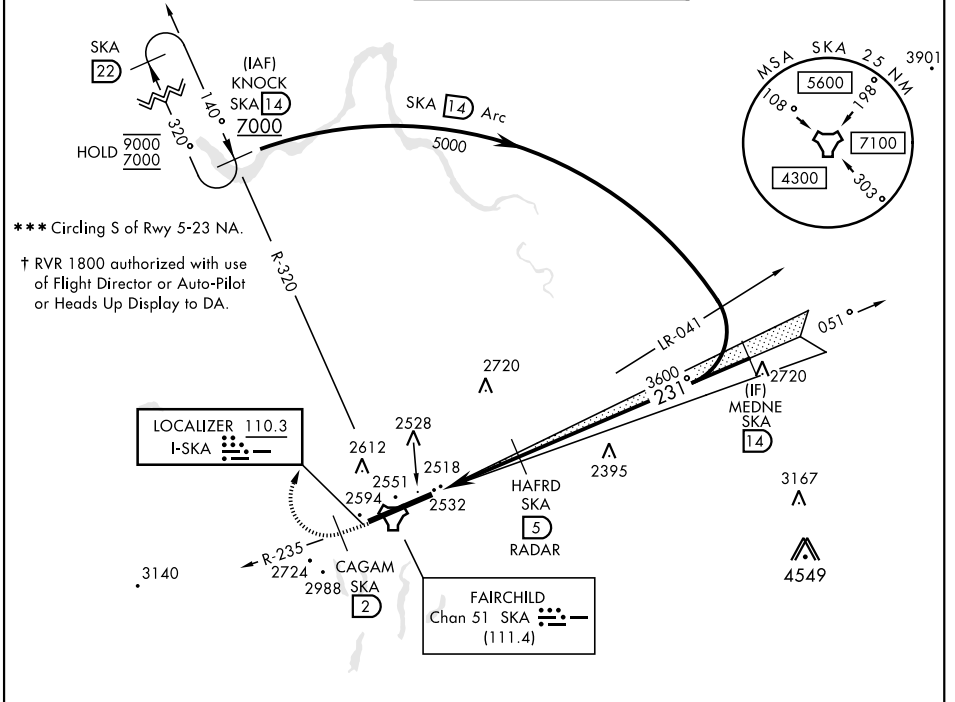
DME or RADAR reqrd for LOC. RADAR reqrd for KNOCK holding.

**ALSIF-1**

MISSED APPROACH: Climb to 7000 via SKA R-235. At CAGUM, turn right heading 005° to intcp SKA R-320 to KNOCK and hold, cont climb in hold to 7000.

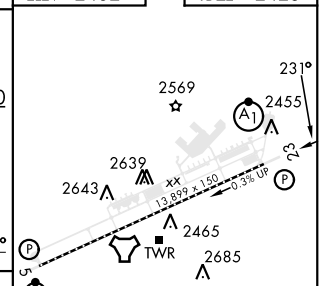
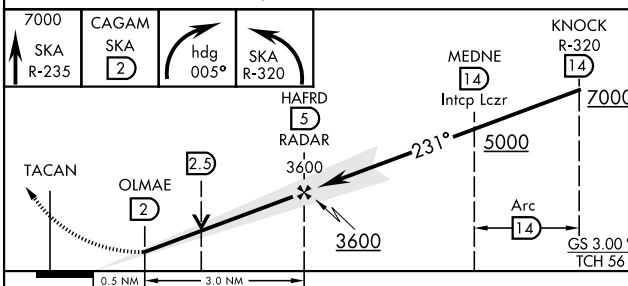
**▲** \* When ALS inop, increase RVR to 40 and vis to ¼ mile.  
**\*\*** When ALS inop, increase RVR to 55 and vis to 1 mile.

ATIS <b>257.625</b>	SPOKANE APP CON <b>123.75 282.25</b> (208° - 028°) <b>133.35 263.0</b> (029° - 207°)	TOWER <b>120.35 233.7</b>	GND CON <b>123.6 275.8</b>
------------------------	--	------------------------------	-------------------------------



EMERG SAFE ALT 100 NM 10,900

ELEV 2462	TDZE 2423
-----------	-----------



CATEGORY	A	B	C	D	E
S-ILS 23 *†	2623/24		200	(200-½)	
S-LOC 23 **	2800/24	377 (400-½)	2800/35	377	(400-¾)
<b>CIRCLING</b> ***	2900-1 438 (500-1)	2920-1 458 (500-1)	3040-1½ 578 (600-1½)	3040-2 578 (600-2)	3600-3 1138 (1200-3)
	HIRL Rwy 5-23 TDZL/CL Rwy 5				
FAF to MAP 3.0 NM					
Knots	60	90	120	150	180
Min:Sec	3:00	2:00	1:30	1:12	1:00

SPOKANE, WASHINGTON 47°37'N-117°39'W FAIRCHILD AFB (KSKA)

Amdt 4 03NOV22

# ILS or LOC RWY 23

NW-1, 11 JUL 2024 to 08 AUG 2024

NW-1, 11 JUL 2024 to 08 AUG 2024