

SPOKANE, WASHINGTON

# RNAV (GPS) RWY 23

APCH CRS	Rwy Idg	<b>13,899</b>
<b>231°</b>	TDZE	<b>2423</b>
	Arprt Elev	<b>2462</b>

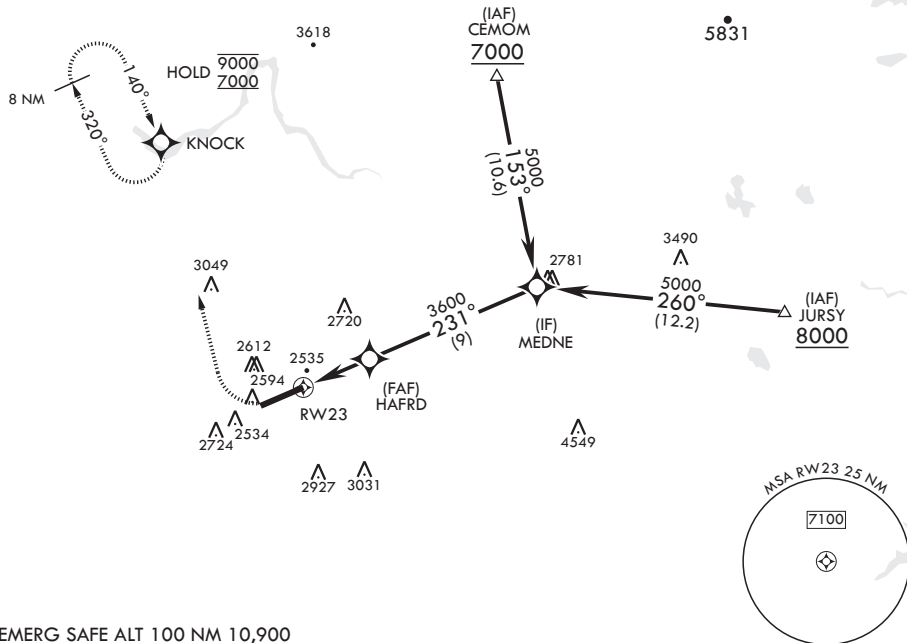
AL-553 (USAF)

FAIRCHILD AFB (KSKA)

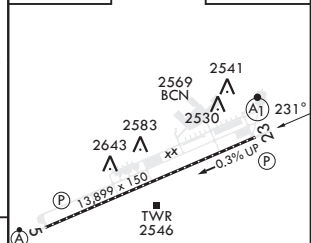
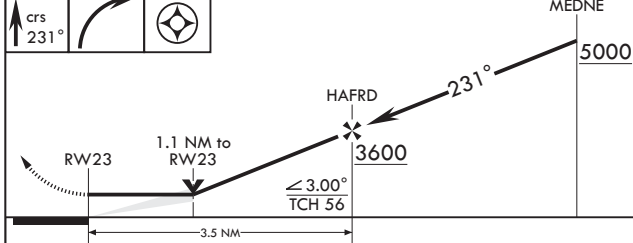
RNP APCH	ALSIF-1	MISSED APPROACH: Climb to 3000, then climbing right turn to 7000 direct to KNOCK and hold, continue climb in hold to 7000.
RADAR required for KNOCK holding.		
* When ALS inop, increase CAT A8 RVR to 55 and vis to 1 mile, CAT CDE vis to 1 1/4 miles.		

ATIS <b>257.625</b>	SPOKANE APP CON <b>123.75 282.25</b> (208°-028°) <b>133.35 263.0</b> (029°-207°)	TOWER <b>120.35 233.7</b>	GND CON <b>123.6 275.8</b>
------------------------	--	------------------------------	-------------------------------

\*\* Circling S of Rwy 5-23 NA.



3000	7000	KNOCK	ELEV 2462	TDZE 2423
------	------	-------	-----------	-----------



CATEGORY	A	B	C	D	E
LNAV MDA*	2820/24	397 (400-½)	2820/35	397	(400-¾)
CIRCLING**	2900-1 438 (500-1)	2920-1 458 (500-1)	3040-1½ 578 (600-1½)	3040-2 578 (600-2)	3600-3 1138 (1200-3)

HIRL all Rwys  
TDZL/CL Rwy 5

SPOKANE, WASHINGTON  
Amdt 2 03NOV22

47°37'N - 117°39'W

FAIRCHILD AFB (KSKA)

# RNAV (GPS) RWY 23

NW-1, 11 JUL 2024 to 08 AUG 2024

NW-1, 11 JUL 2024 to 08 AUG 2024