

ABERDEEN, MARYLAND

RNAV (GPS) RWY 22

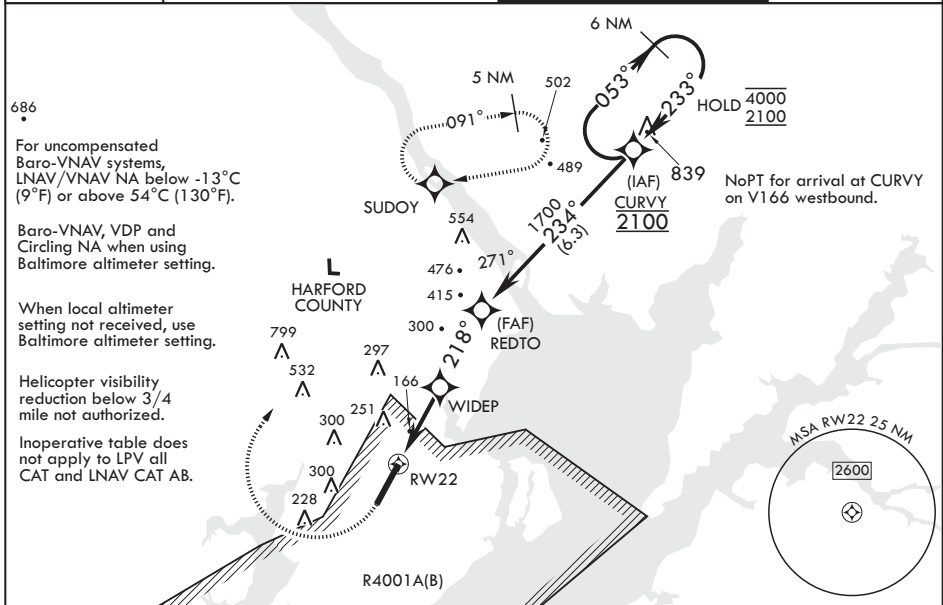
WAAS CH 70342 W22A	APCH CRS 218°	Rwy ldg TDZE Arpt Elev	7998 45 45
--------------------------	------------------	------------------------------	------------------

AL-555 (USA)

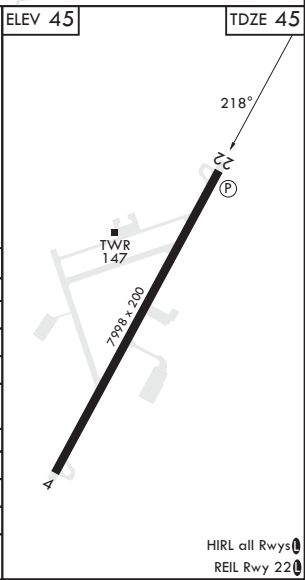
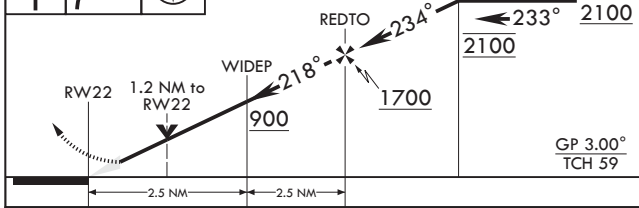
PHILLIPS AAF (ABERDEEN PROVING GROUND) (KAPG)

RNP APCH-GPS ⚠ **Circling NA SE of RWY 4-22.	MISSED APPROACH: Climb to 500, then climbing right turn to 2000 direct SUDOY and hold.
---	--

ATIS* 124.425	POTOMAC APP CON/DEP CON 125.525 291.625	TOWER* 126.15 (CTAF) 229.6	GND CON 121.9
------------------	--	-------------------------------	------------------



500 ↑	2000 ↷	SUDOY	VGSI and RNAV glidepath not coincident (VGSI Angle 3.00/TCH 49).	6 NM Holding Pattern CURVY 4000 2100 053° 233°	ELEV 45	TDZE 45
----------	-----------	-------	--	--	---------	---------



CATEGORY	A	B	C	D
LPV DA	295-1	250	(300-1)	
LNAV/VNAV DA	560-1 3/8	515	(600-1 3/8)	
LNAV MDA	560-1 515 (600-1)	560-1 3/8 515 (600-1 3/8)		
C CIRCLING**	560-1 515 (600-1)	640-1 595 (600-1)	680-1 3/4 635 (700-1 3/4)	880-2 3/4 835 (900-2 3/4)
BALTIMORE WASHINGTON INTL ALTIMETER SETTING MINIMUMS				
LPV DA	376-1 1/4	281	(300-1 1/4)	
LNAV/VNAV DA	657-1 3/4	612	(600-1 3/4)	
LNAV MDA	660-1 1/4 515 (700-1 1/4)	660-1 3/4 515 (700-1 3/4)		
C CIRCLING**	660-1 615 (700-1 1/4)	740-1 1/4 695 (700-1 1/4)	780-2 735 (800-2)	961-3 916 (1000-3)

ABERDEEN, MARYLAND 39°28'N - 76°10'W PHILLIPS AAF (ABERDEEN PROVING GROUND) (KAPG)

Amdt 3 15JUN23

RNAV (GPS) RWY 22

NE-3, 11 JUL 2024 to 08 AUG 2024

NE-3, 11 JUL 2024 to 08 AUG 2024

HIRL all Rwy's
REIL Rwy 22