

BLEWE FIVE ARRIVAL

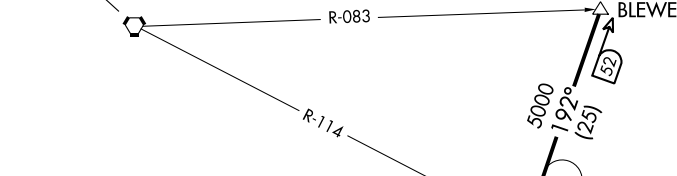
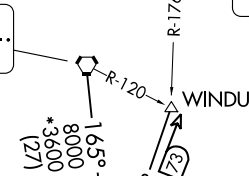
AUSTIN, TEXAS

AUSTIN APP CON
 127.225 317.65
 AUS D-ATIS
 124.4
 EDC AWOS-3
 118.825
 HYI ATIS *
 120.825
 RYW AWOS-3PT
 119.375

MAVERICK
 113.1 TTT
 Chan 78

WACO
 115.3 ACT
 Chan 100

GOOCH SPRINGS
 112.5 AGJ
 Chan 72



SEWZY
 VERTICAL NAVIGATION
 PLANNING
 Expect 13000

LAGO VISTA TX/
 RUSTY ALLEN

TAYLOR MUNI

LAKEWAY
 AIRPARK

AUSTIN EXEC

CENTEX
 112.8 CWK
 Chan 75

AUSTIN-BERGSTROM
 INTL

NOTE: RADAR required.
 NOTE: DME required.

SAN MARCOS RGNL

NOTE: Chart not to scale.

ARRIVAL ROUTE DESCRIPTION

WACO TRANSITION (ACT.BLEWE5): From over ACT VORTAC on ACT R-165 to BLEWE. Thence

WINDU TRANSITION (WINDU.BLEWE5): From over WINDU on CWK R-012 to BLEWE. Thence

. . . .From over BLEWE on CWK R-012 to SEWZY, then on CWK R-012 to CWK VORTAC. Expect vectors to final approach course at or prior to CWK VORTAC.

BLEWE FIVE ARRIVAL

AUSTIN, TEXAS

SC-3, 11 JUL 2024 to 08 AUG 2024

SC-3, 11 JUL 2024 to 08 AUG 2024