

LOC/DME I-VNKG 110.5 Chan 42	APP CRS 175°	Rwy Idg TDZE Apt Elev 9000 492 542
---	------------------------	--

ILS or LOC RWY 18L

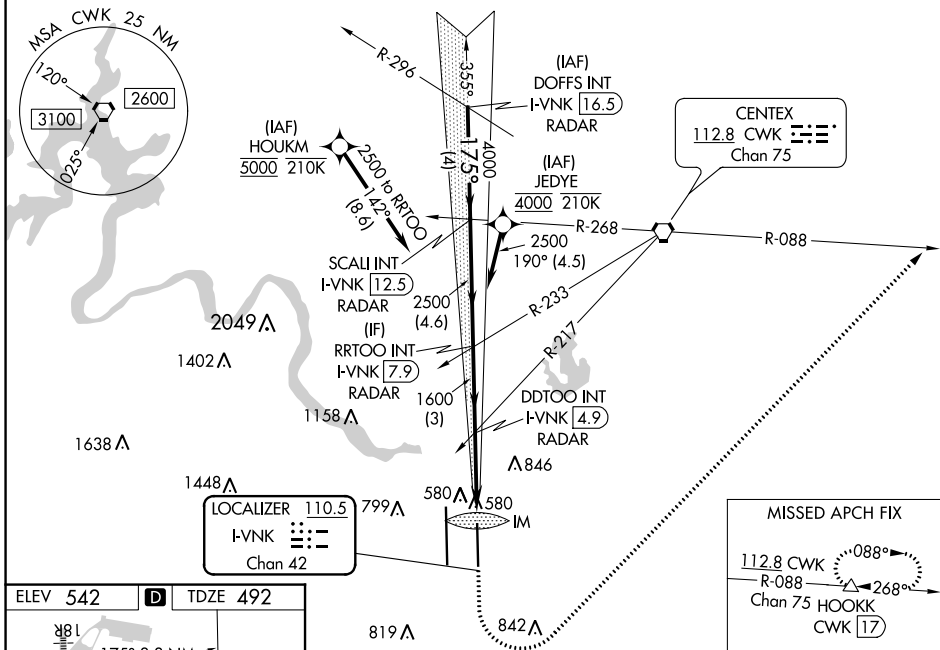
AUSTIN-BERGSTROM INTL (AUS)

RNP APCH-GPS. From HOUKM or JEDYE.
 RADAR required for procedure entry from DOFFS. DME required.
 Simultaneous approach authorized. For inop ALS, increase S-ILS-18L Cat E visibility to RVR 4000, and S-LOC 18L Cats C, D, and E visibility to RVR 5500.

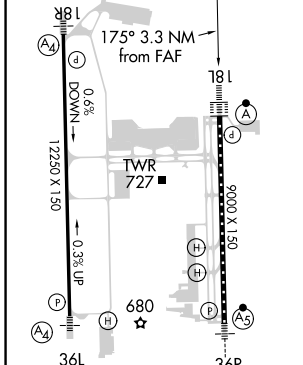


MISSED APPROACH: Climb to 1000, then climbing left turn to 3000 on heading 040° and CWK VORTAC R-088 to HOOKK/CWK 17 DME and hold.

D-ATIS 124.4	AUSTIN APP CON 127.225 317.65 (EAST) 120.875 270.25 (SOUTH) 119.0 370.85 (WEST)	AUSTIN TOWER 121.0 281.5	GND CON 121.9 348.6	CLNC DEL 125.5 263.0	CPDLC
------------------------	---	------------------------------------	-------------------------------	--------------------------------	-------

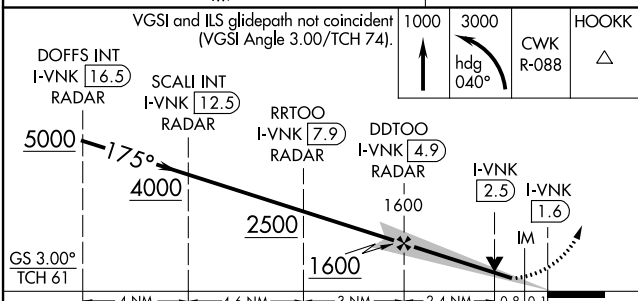


ELEV 542	D	TDZE 492
----------	----------	----------



TDZ/CL Rws 18L and 36R
 HIL Rws 18L-36R and 18R-36L
 FAF to MAP 3.3 NM

Knots	60	90	120	150	180
Min:Sec	3:18	2:12	1:39	1:19	1:06



CATEGORY	A	B	C	D	E
S-ILS 18L	692/18 200 (200-½)				
S-LOC 18L	840/24	348 (300-½)	840/30 348 (300-¾)		
C CIRCLING	1040-1 498 (500-1)	1120-1 578 (600-1)	1200-1¾ 658 (700-1¾)	1200-2 658 (700-2)	1520-3 978 (1000-3)

SC-3, 11 JUL 2024 to 08 AUG 2024

SC-3, 11 JUL 2024 to 08 AUG 2024