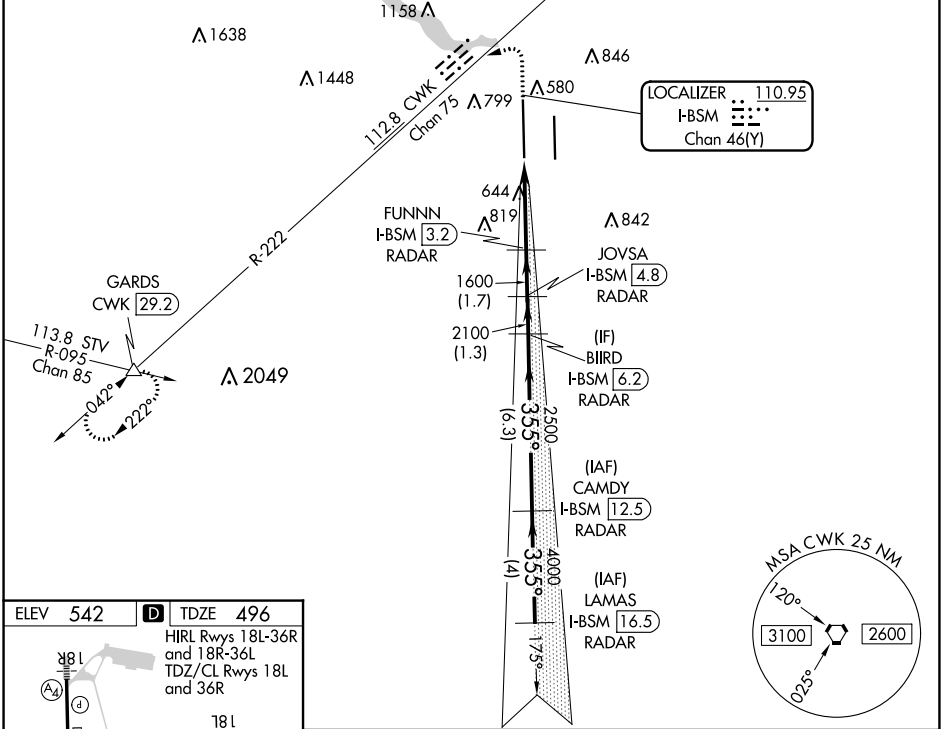


LOC/DME I-BSM	APP CRS	Rwy Idg	12250
110.95	355°	TDZE	496
Chan 46(Y)		Apt Elev	542

ILS or LOC RWY 36L

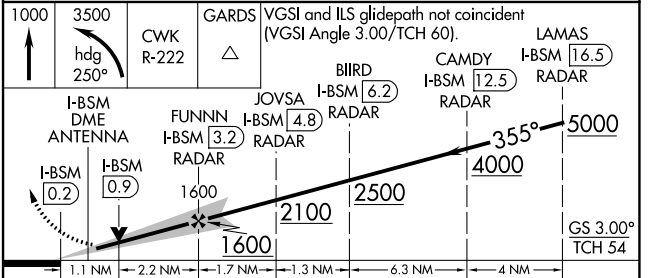
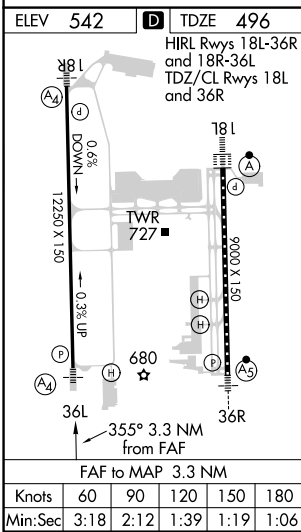
AUSTIN-BERGSTROM INTL (AUS)

DME or RADAR required.			MALS	MISSED APPROACH: Climb to 1000 then climbing left turn to 3500 on heading 250° and CWK VORTAC R-222 to GARDS INT/CWK 29.2 DME and hold.		
▼ Simultaneous approach authorized. For inop ALS, increase S-LOC 36L Cats C/D/E visibility to RVR 6000. Inop table does not apply to S-ILS 36L all Cats.			(A4)			
D-ATIS	AUSTIN APP CON	AUSTIN TOWER	GND CON	CLNC DEL	CPDLC	
124.4	127.225 317.65 120.875 270.25 (SOUTH) 119.0 370.85 (WEST)	121.0 281.5	121.9 348.6	125.5 263.0		



SC-3, 11 JUL 2024 to 08 AUG 2024

SC-3, 11 JUL 2024 to 08 AUG 2024



CATEGORY	A	B	C	D	E
S-ILS 36L	696/40 200 (200-¾)				
S-LOC 36L	900/40	404 (400-¾)	900/50 404 (400-1)		