

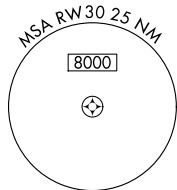
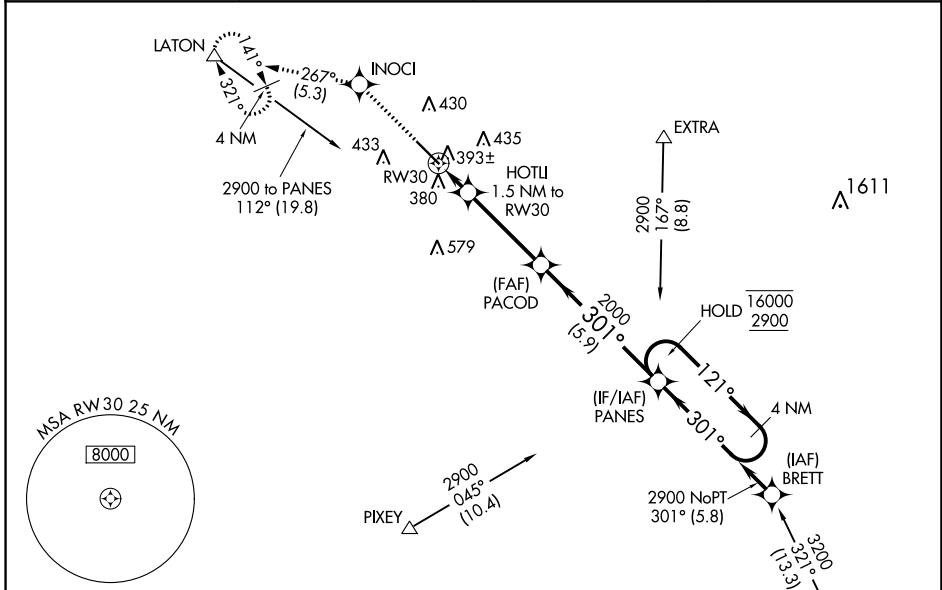
WAAS CH 77623 W30A	APP CRS 301°	Rwy Idg TDZE Apt Elev	5635 295 295
--	------------------------	-----------------------------	---

RNAV (GPS) RWY 30

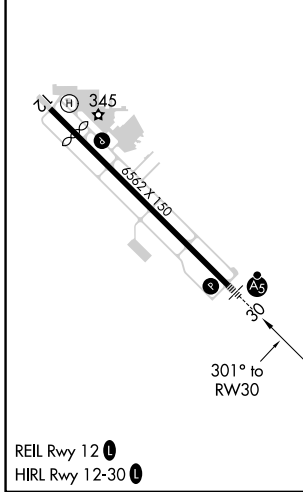
VISALIA MUNI (VIS)

RNP APCH.	MALSR	MISSED APPROACH: Climb to 3000 direct INOCI and on track 267° to LATON and hold, continue climb-in-hold to 3000.
<p>⚠ For uncompensated Baro-VNAV systems, LNAV/VNAV NA below -15°C or above 54°C. For inop ALS, increase LNAV/VNAV all Cats visibility to ¾ SM, LNAV Cats C/D to 1 SM.</p>		

AWOS-3PT 119.925	FRESNO APP CON 118.5	CLNC DEL 118.5	UNICOM 123.05 (CTAF)
----------------------------	--------------------------------	--------------------------	--------------------------------



ELEV 295	D	TDZE 295
----------	----------	----------



3000	INOCI	LATON	PANES	
↑	✧	tr 267°	4 NM Holding Pattern	
*LNAV only.		HOTLI 1.5 NM to RW30	2000	16000
RW30		*1 NM to RW30	301°	121° → 16000
1 NM		0.5 NM	← 301°	← 301° 2900
820*		3.7 NM	2000	GP 3.00°
		5.9 NM		TCH 53
CATEGORY	A	B	C	D
LPV DA		502-½	207 (300-½)	
LNAV/VNAV DA		554-½	259 (300-½)	
LNAV MDA	660-½	365 (400-½)	660-⅝	365 (400-⅝)
C CIRCLING	720-1	760-1	760-1½	940-2
	425 (500-1)	465 (500-1)	465 (500-1½)	645 (700-2)

SW-2, 11 JUL 2024 to 08 AUG 2024

SW-2, 11 JUL 2024 to 08 AUG 2024