

DOVER, DELAWARE

TACAN RWY 19

TACAN DOV Chan 37	APCH CRS 204°	Rwy ldg TDZE Arpt Elev	9602 23 29
----------------------	------------------	------------------------------	------------------

ALSF-1

DOVER AFB (KDOV)

▼ * When ALS inop, increase CAT AB RVR to 55 and vis to 1 mile, CAT CDE vis to 1 3/8 miles.



MISSED APPROACH: Climb to 2000 via DOV TACAN R-194 to LERSE/DOV 6.9 DME and hold.

ATIS 127.825 273.5	APP CON 132.425 257.875	TOWER 126.35 279.625	GND CON 118.875 225.4	CLNC DEL 125.55 289.4
-----------------------	----------------------------	-------------------------	--------------------------	--------------------------

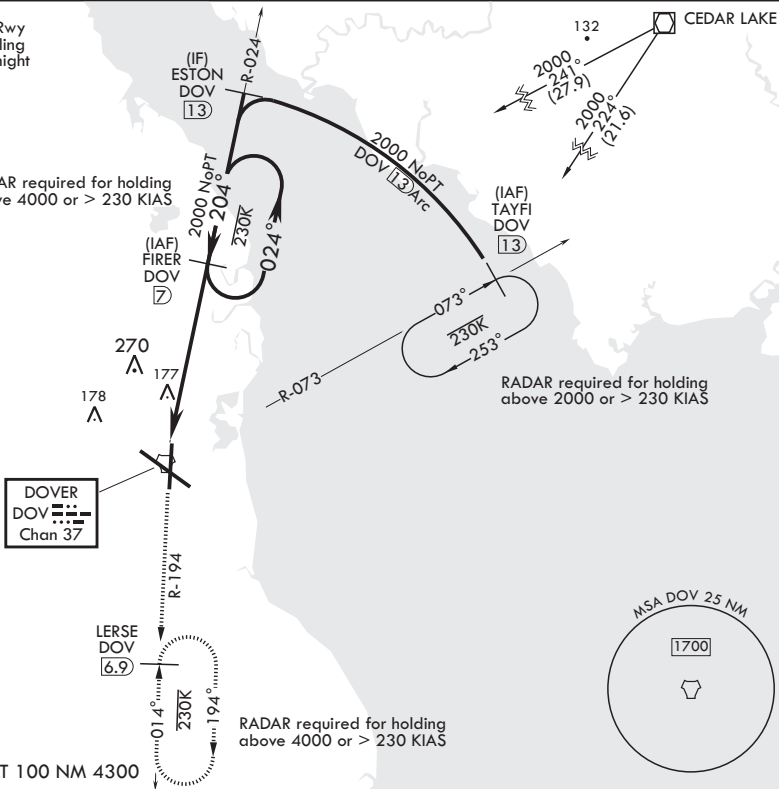
CAUTION: When Rwy 14 VGSI inop, circling to Rwy 14 NA at night

RADAR required for holding above 4000 or > 230 KIAS

RADAR required for holding above 2000 or > 230 KIAS

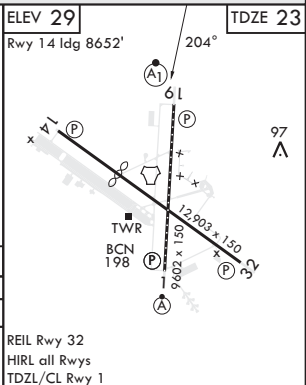
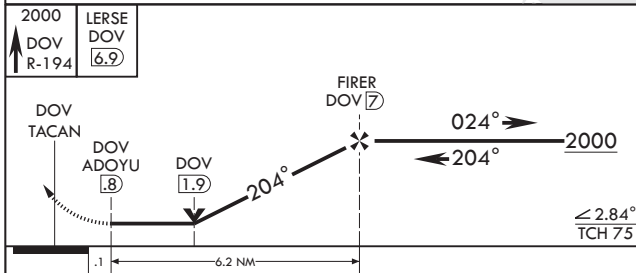
RADAR required for holding above 4000 or > 230 KIAS

EMERG SAFE ALT 100 NM 4300



NE-3, 11 JUL 2024 to 08 AUG 2024

NE-3, 11 JUL 2024 to 08 AUG 2024



CATEGORY	A	B	C	D	E
S-19*	480/24 457 (500-½)		480/45	457	(500-¾)
◻ CIRCLING	540-1 511 (600-1)		620-1½ 591 (600-1½)	620-2 591 (600-2)	1080-3 1051 (1100-3)

DOVER, DELAWARE
Amdt 3 11AUG22

39°08'N - 75°28'W

DOVER AFB (KDOV)

TACAN RWY 19