

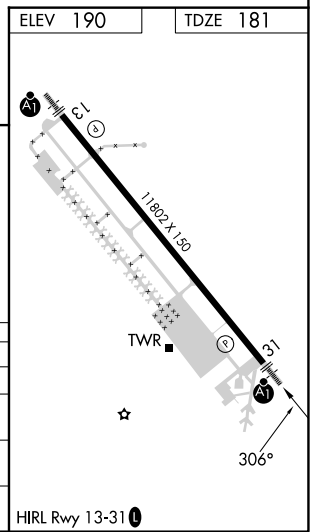
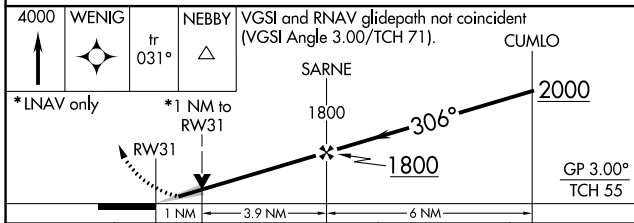
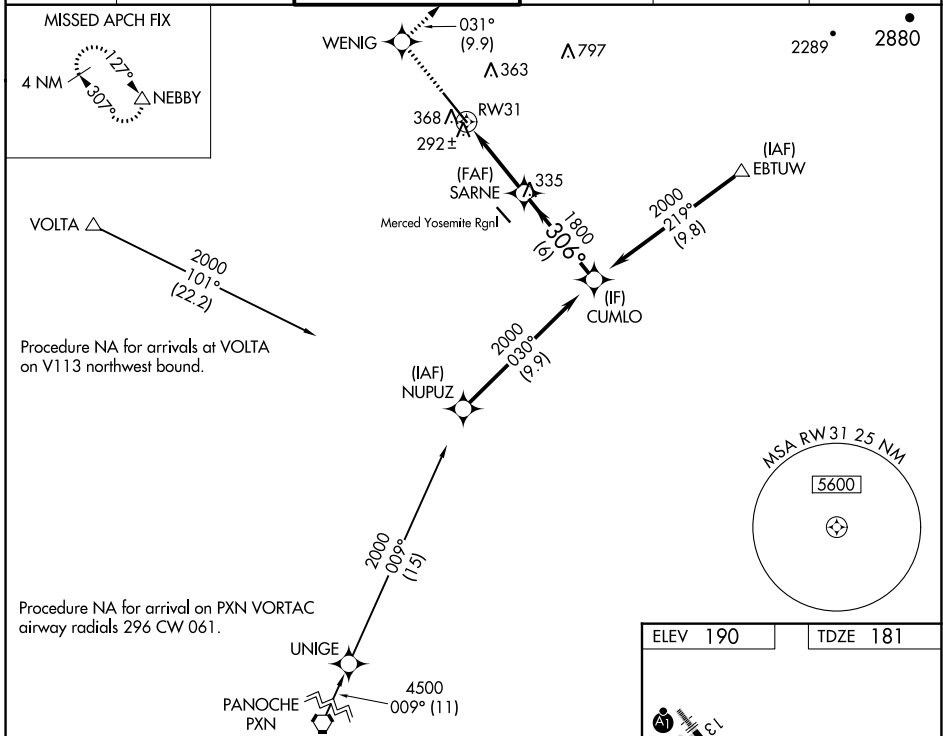
WAAS CH <b>87110</b> <b>W31A</b>	APP CRS <b>306°</b>	Rwy Idg <b>11802</b> TDZE <b>181</b> Apt Elev <b>190</b>
--	------------------------	--

# RNAV (GPS) RWY 31

CASTLE (MER)

RNP APCH.	ALSF-1 	MISSED APPROACH: Climb to 4000 direct WENIG and on track 031° to NEBBY and hold, continue climb-in-hold to 4000.
-----------	------------	--

ATIS <b>124.475</b>	NORCAL APP CON <b>120.95 269.45</b>	CASTLE TOWER ★ <b>118.175 (CTAF) 235.775</b>	GND CON <b>133.575</b>	UNICOM <b>122.95</b>	<b>123.0</b>
------------------------	--	---	---------------------------	-------------------------	--------------



CATEGORY	A	B	C	D
LPV DA		381-1/2	200 (200-1/2)	
LNAV/VNAV DA		498-1/2	317 (400-1/2)	
LNAV MDA	560-1/2	379 (400-1/2)	560-5/8	379 (400-5/8)
CIRCLING	660-1	470 (500-1)	720-1 1/2 530 (600-1 1/2)	800-2 610 (700-2)

SW-2, 11 JUL 2024 to 08 AUG 2024

SW-2, 11 JUL 2024 to 08 AUG 2024