

WAAS CH 86226 W10D	APP CRS 101°	Rwy Idg TDZE Apt Elev	11492 1135 1203
--	------------------------	-----------------------------	--

RNAV (GPS) Y RWY 10R

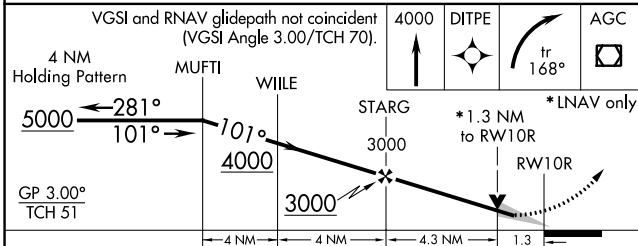
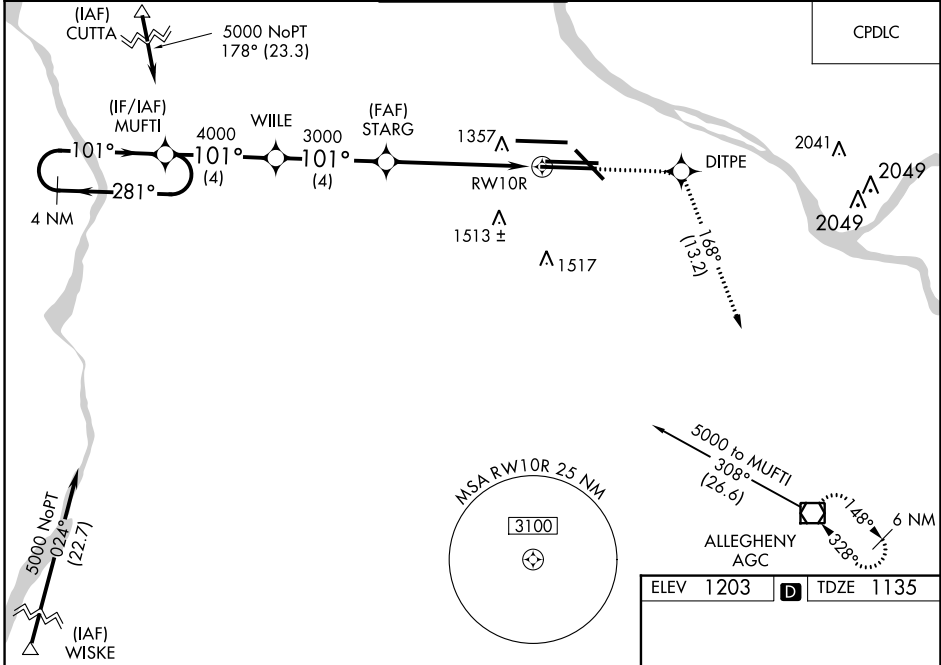
PITTSBURGH INTL (PIT)

⚠ For uncompensated Baro-VNAV systems, LNAV/VNAV NA below -17°C (2°F) or above 54°C (130°F). DME/DME RNP-0.3 NA. Simultaneous approach authorized with ILS or LOC Rwy 10L, ILS Rwy 10L (Cat II), ILS Rwy 10L (Cat III). LNAV procedure NA during simultaneous operations. Use of FD or AP providing RNAV track guidance required during simultaneous operations. For inop ALS, increase LPV visibility to RVR 5000 all Cats, LNAV/VNAV to 1 3/4 SM all Cats and LNAV Cat C/D visibility to 1 1/2 SM.

ALS-F-2

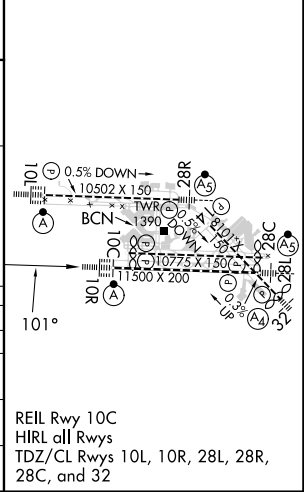
MISSED APPROACH:
Climb to 4000 direct DITPE and right turn on track 168° direct AGC VOR/DME and hold.

D-ATIS ARR 127.25 DEP 135.9	PITTSBURGH APP CON 123.95 360.8	PITTSBURGH TOWER 128.3 291.7	GND CON SOUTH 121.9 348.6 NORTH 127.8 348.6	CLNC DEL 126.75 353.7
---	---	--	---	---------------------------------



ELEV 1203	D	TDZE 1135
-----------	----------	-----------

CATEGORY	A	B	C	D
LPV DA	1443/24		308 (300-1/2)	
LNAV/VNAV	1658-1 3/8		523 (500-1 3/8)	
LNAV MDA	1620/24	485 (500-1/2)	1620/50	485 (500-1)
C CIRCLING	1700-1	497 (500-1)	1880-2 677 (700-2)	1880-2 1/4 677 (700-2 1/4)



NE-4, 11 JUL 2024 to 08 AUG 2024

NE-4, 11 JUL 2024 to 08 AUG 2024