

FSHUN THREE DEPARTURE (RNAV)

**TOP ALTITUDE:
7000**

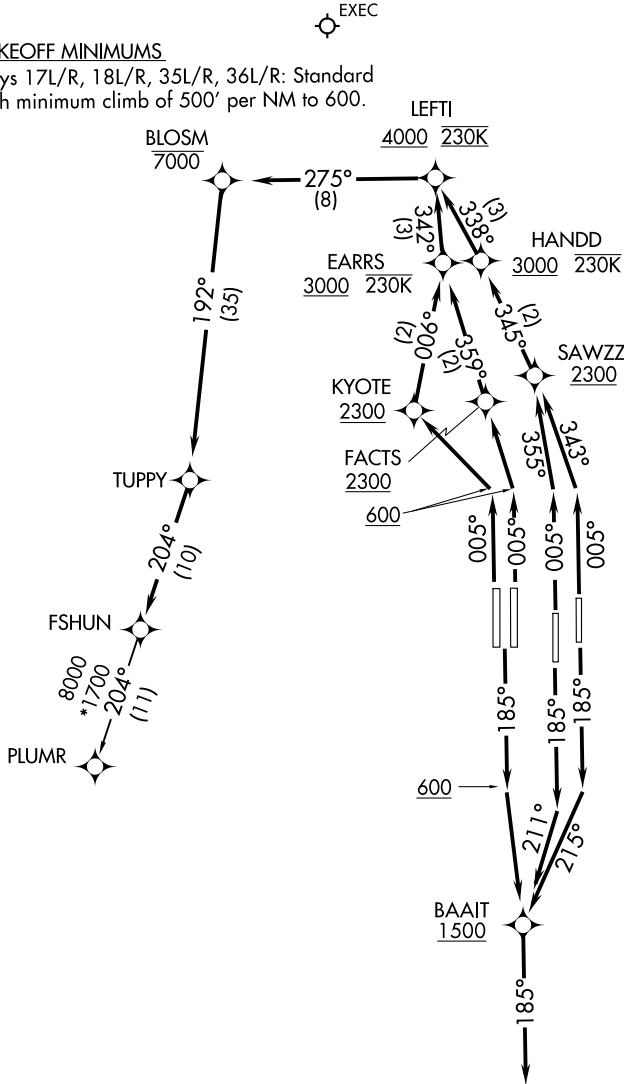
RNAV 1 - DME/DME/IRU or GPS.
RADAR required.

D-ATIS DEP 120.525
 CLNC DEL 134.7 341.7
 CPDLC
 GND CON 126.4 (East)
 121.8 (West)
 ORLANDO TOWER 118.45 253.5
 (Rwys 17L-35R,17R-35L) 124.3 253.5
 (Rwys 18L-36R, 18R-36L) 120.15 284.7
 ORLANDO DEP CON 120.15 284.7

TAKEOFF MINIMUMS

Rwys 17L/R, 18L/R, 35L/R, 36L/R: Standard with minimum climb of 500' per NM to 600.

SE-3, 11 JUL 2024 to 08 AUG 2024



SE-3, 11 JUL 2024 to 08 AUG 2024

NOTE: Jet and turbo-prop aircraft only.

(NARRATIVE ON FOLLOWING PAGE)

NOTE: Chart not to scale.