

# JEEMY THREE DEPARTURE (RNAV)

ORLANDO, FLORIDA

**TOP ALTITUDE:**  
**RWY 17L/R, RWY 18L/R: 7000**  
**RWY 35L/R, RWY 36L/R: 16000**

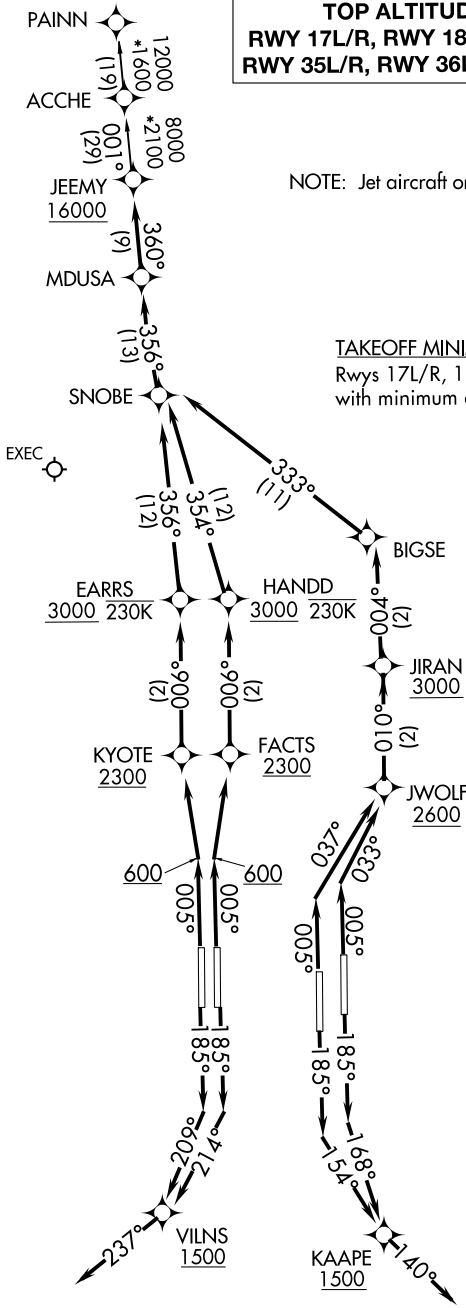
D-ATIS DEP 120.525  
 CLNC DEL 134.7 341.7  
 CPDLC  
 GND CON 126.4 (East)  
 121.8 (West)  
 ORLANDO TOWER 118.45 253.5  
 (Rwys 17L-35R, 17R-35L) 124.3 253.5  
 (Rwys 18L-36R, 18R-36L)  
 ORLANDO DEP CON 124.8 307.0 (North)  
 120.15 284.7 (South)

NOTE: Jet aircraft only.

### TAKEOFF MINIMUMS

Rwys 17L/R, 18L/R, 35L/R, 36L/R: Standard with minimum climb of 500' per NM to 600.

RNAV 1 - DME/DME/IRU or GPS.  
 RADAR required.



(NARRATIVE ON FOLLOWING PAGE)

NOTE: Chart not to scale.

# JEEMY THREE DEPARTURE (RNAV)

SE-3, 11 JUL 2024 to 08 AUG 2024

SE-3, 11 JUL 2024 to 08 AUG 2024