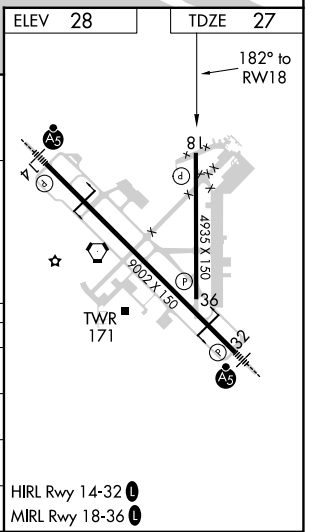
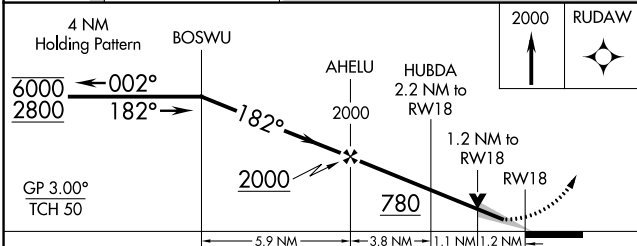
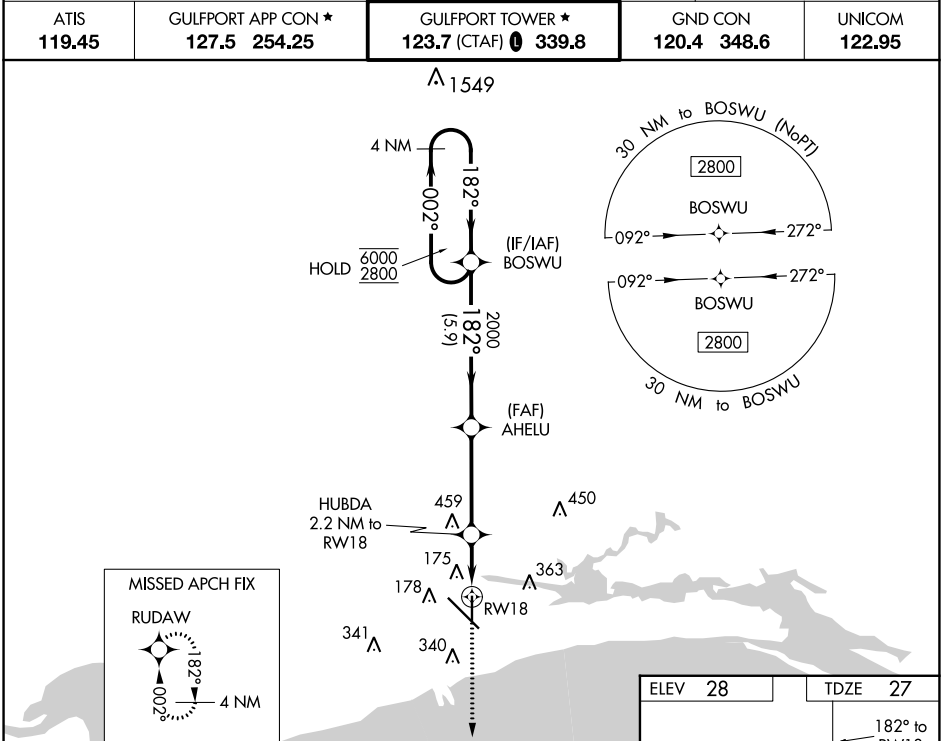


WAAS CH 69512 W18A	APP CRS 182°	Rwy Idg 4935 TDZE 27 Apt Elev 28
--	------------------------	---

RNAV (GPS) RWY 18

GULFPORT-BILOXI INTL (GPT)

RNP APCH - GPS.		MISSED APPROACH: Climb to 2000 direct RUDAW and hold.		
ATIS 119.45	GULFPORT APP CON * 127.5 254.25	GULFPORT TOWER * 123.7 (CTAF) 339.8	GND CON 120.4 348.6	UNICOM 122.95



CATEGORY	A	B	C	D
LPV DA		227- $\frac{3}{4}$	200 (200- $\frac{3}{4}$)	
LNAV/VNAV DA		442-1 $\frac{1}{8}$	415 (500-1 $\frac{1}{8}$)	
LNAV MDA	440-1	413 (500-1)	440-1 $\frac{1}{8}$	413 (500-1 $\frac{1}{8}$)
CIRCLING	520-1 492 (500-1)	640-1 612 (700-1)	760-2 732 (800-2)	760-2 $\frac{1}{4}$ 732 (800-2 $\frac{1}{4}$)

SC-4, 11 JUL 2024 to 08 AUG 2024

SC-4, 11 JUL 2024 to 08 AUG 2024