

VORTAC GPT 109.0 Chan 27	APP CRS 308°	Rwy Idg 9002 TDZE 27 Apt Elev 28
---------------------------------------	------------------------	---

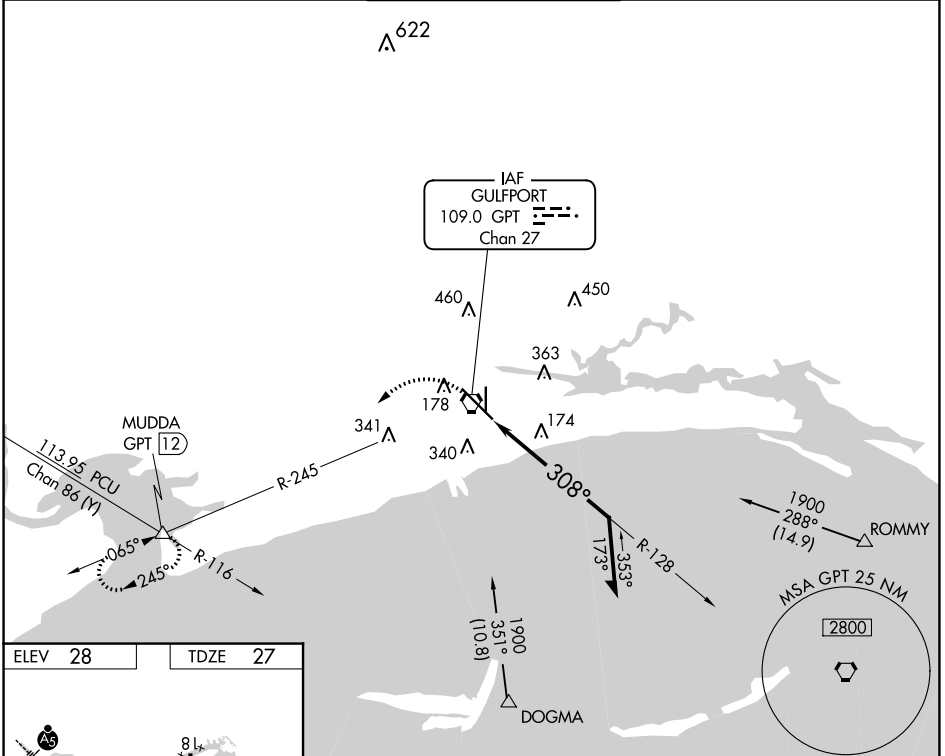
VOR Y RWY 32

GULFPORT-BILOXI INTL (GPT)

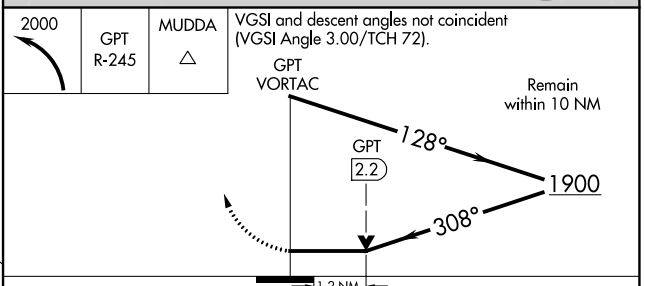
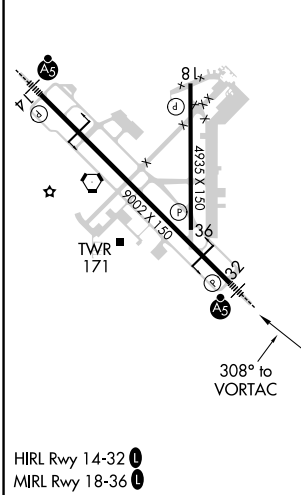
⚠ Rwy 32 helicopter visibility reduction below RVR 4000 NA. For inop ALS, increase S-32 Cat A/B visibility to RVR 5500.

MALSR
MISSED APPROACH: Climbing left turn to 2000 on GPT VORTAC R-245 to MUDDA INT/12 DME and hold.

ATIS 119.45	GULFPORT APP CON ★ 127.5 254.25	GULFPORT TOWER ★ 123.7 (CTAF) 339.8	GND CON 120.4 348.6	UNICOM 122.95
-----------------------	---	---	-------------------------------	-------------------------



ELEV 28	TDZE 27
---------	---------



CATEGORY	A	B	C	D
S-32	480/40	453 (500-¾)	480/45	453 (500-¾)
C CIRCLING	520-1 492 (500-1)	640-1 612 (700-1)	760-2 732 (800-2)	760-2¼ 732 (800-2¼)

SC-4, 11 JUL 2024 to 08 AUG 2024

SC-4, 11 JUL 2024 to 08 AUG 2024