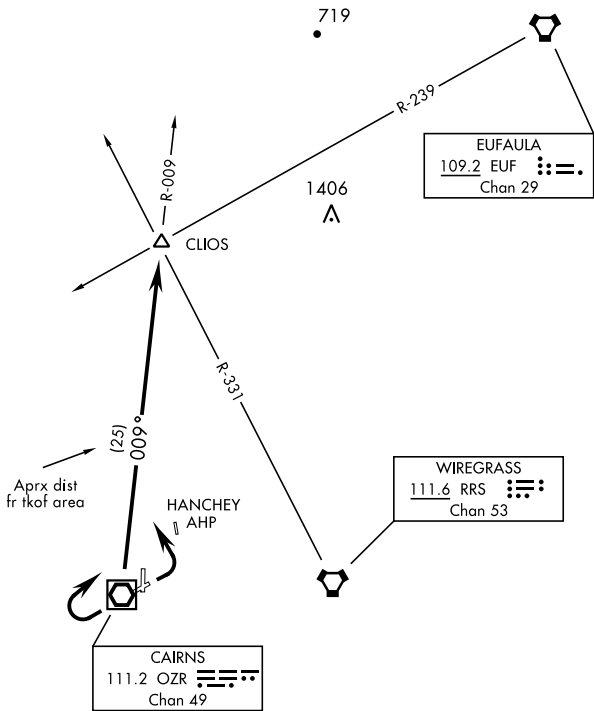


RADAR required

ATIS 111.2 316.15  
CLNC DEL ★  
118.075 380.1  
GND CON★  
121.9 288.25  
TOWER ★  
135.2 (CTAF) 248.55  
DEP CON ★  
121.1 319.25  
JACKSONVILLE CENTER  
134.3 322.55



SE-4, 11 JUL 2024 to 08 AUG 2024

SE-4, 11 JUL 2024 to 08 AUG 2024

DEPARTURE ROUTE DESCRIPTION

TAKEOFF RWY 6 or RWY 18: Climbing left turn heading 330°...

TAKEOFF RWY 24: Climbing right turn heading 050°....

TAKEOFF RWY 36: Climb on heading 350°...

TAKEOFF FROM CENTER OF HELIPAD D1: Climb on heading 350°...

TAKEOFF FROM CENTER OF HELIPAD D2: Climb on heading 350°...

Maintain 2000, expect clearance to requested altitude/flight level ten (10) minutes after departure.

...intercept OZR VOR/DME R-009 to CLIOS INT.