

FORT NOVOSHEL, ALABAMA

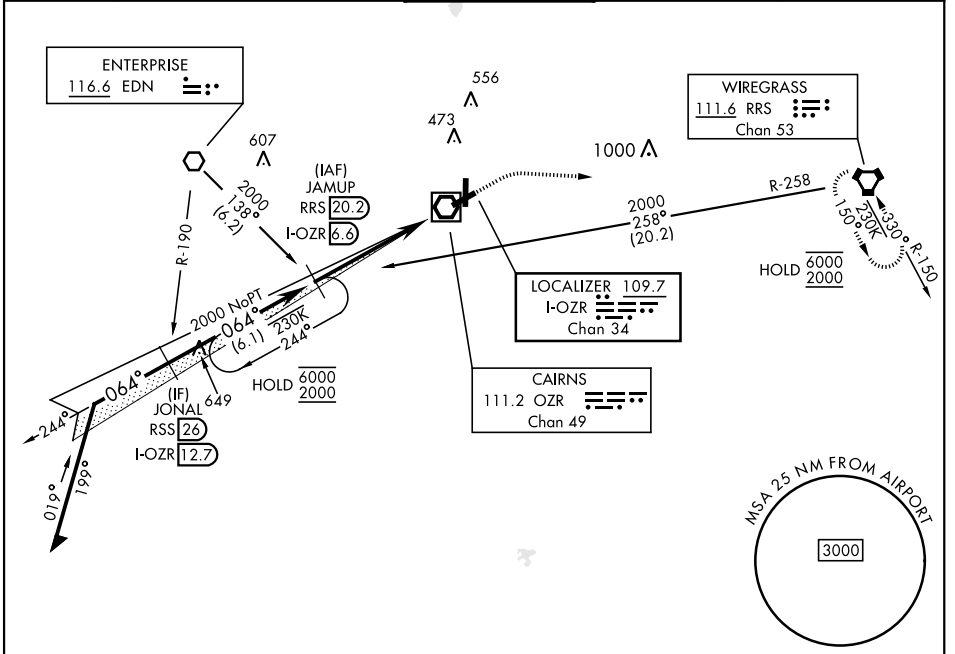
ILS or LOC RWY 6

LOC I-OZR 109.7 Chan 34	APCH CRS 064°	Rwy Idg TDZE Arprt Elev	4546 298 301
---	-------------------------	-------------------------------	---

[USA]

CAIRNS AAF (KOZR)

RADAR or DME required		MALSR AS	MISSED APPROACH: Climb to 800 then climbing right turn to 2000 direct RRS VORTAC and hold; or when directed by ATC, climb to 800 then climbing left turn to 2000 heading 290° within 10 NM (RADAR required).		
*When ALS inop, increase RVR to 40, vis to 3/4 mile. **When ALS inop, increase CAT AB RVR to 55, vis to 1 mile, CAT CD vis to 1 1/2 miles.					
ATIS 111.2 316.15	APP CON ★ 021°-120° 125.4 327.125 121°-219° 133.75 270.35 220°-340° 133.45 239.275 341°-020° 121.1 319.25	TOWER ★ 135.2 (CTAF) 248.55	GND CON ★ 121.9 288.25	CLNC DEL ★ 118.075 380.1	



SE-4, 11 JUL 2024 to 08 AUG 2024

SE-4, 11 JUL 2024 to 08 AUG 2024

Remain within 10 NM. GS 2.70° TCH 57 JAMUP RRS 20.2 I-OZR 6.6 244° 6000 2000 064° 2000 5.8 NM	800	2000	RRS	ELEV 301	TDZE 298
CATEGORY	A	B	C	D	
S-ILS 6*	498/24		200	(200-1/2)	
S-LOC 6**	780/24	482 (500-1/2)	780/50	482 (500-1)	
CIRCLING	780-1 479 (500-1)	820-1 519 (600-1)	900-1 1/2 599 (600-1 1/2)	900-2 599 (600-2)	HIRL Rwy 6-24 MIRL Rwy 18-36

FORT NOVOSHEL, ALABAMA

31°17'N-85°43'W

CAIRNS AAF (KOZR)

Orig 11JUL24

ILS or LOC RWY 6