

# OPPTO-TWO DEPARTURE (OPPTO2.OPPTO)

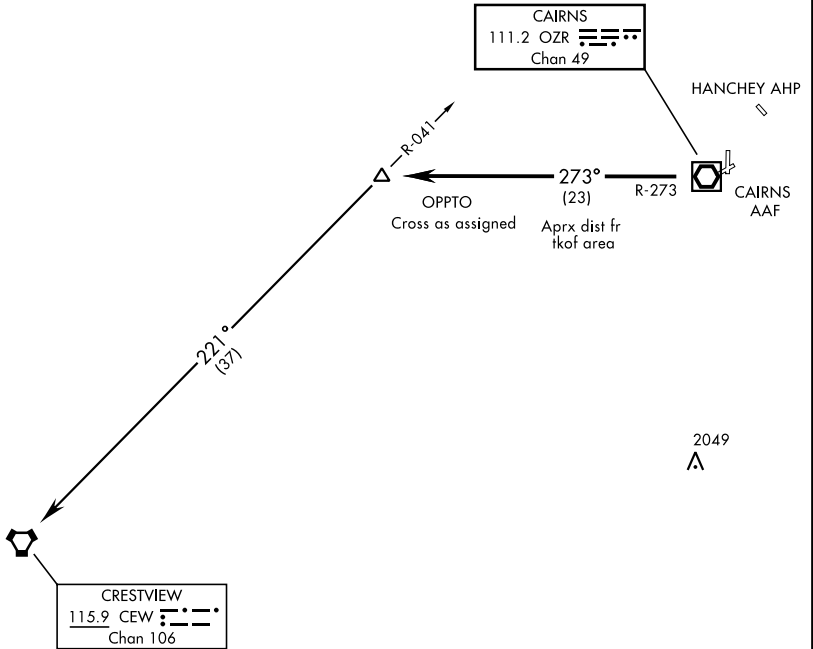
CAIRNS AAF (KOZR)  
FORT NOVOSEL, ALABAMA

RADAR required

ATIS 111.2 316.15  
CLNC DEL ★  
118.075 380.1  
GND CON★  
121.9 288.25  
TOWER ★  
135.2 (CTAF) 248.55  
DEP CON★  
133.45 239.275  
JACKSONVILLE CENTER  
134.3 322.55

[USA]

610  
●



SE-4, 11 JUL 2024 to 08 AUG 2024

SE-4, 11 JUL 2024 to 08 AUG 2024

## DEPARTURE ROUTE DESCRIPTION

- TAKEOFF RWY 6: Climbing left turn heading 270° ....
- TAKEOFF RWY 18: Climbing right turn heading 205° ....
- TAKEOFF RWY 24: Climbing right turn heading 300° ....
- TAKEOFF RWY 36: Climbing left turn heading 270° ....
- TAKEOFF FROM CENTER OF HELIPAD A: Climb heading 310° ....
- TAKEOFF FROM CENTER OF HELIPAD D2: Climb heading 360° ....

Maintain 2000, expect clearance to requested altitude/flight level ten (10) minutes after departure.

Expect RADAR vector to intercept OZR VOR/DME R-273 to OPPTO INT. Thence via Transition.

CRESTVIEW TRANSITION (OPPTO2.CEW): Turn left via CEW R-041 to CEW VORTAC.

# OPPTO-TWO DEPARTURE (OPPTO2.OPPTO)

FORT NOVOSEL, ALABAMA  
CAIRNS AAF (KOZR)