

# RNAV (GPS) RWY 36

WAAS CH <b>63110</b> <b>W36A</b>	APCH CRS <b>004°</b>	Rwy Idg TDZE Arprt Elev	<b>5025</b> <b>298</b> <b>301</b>
--	-------------------------	-------------------------------	---

[USA]

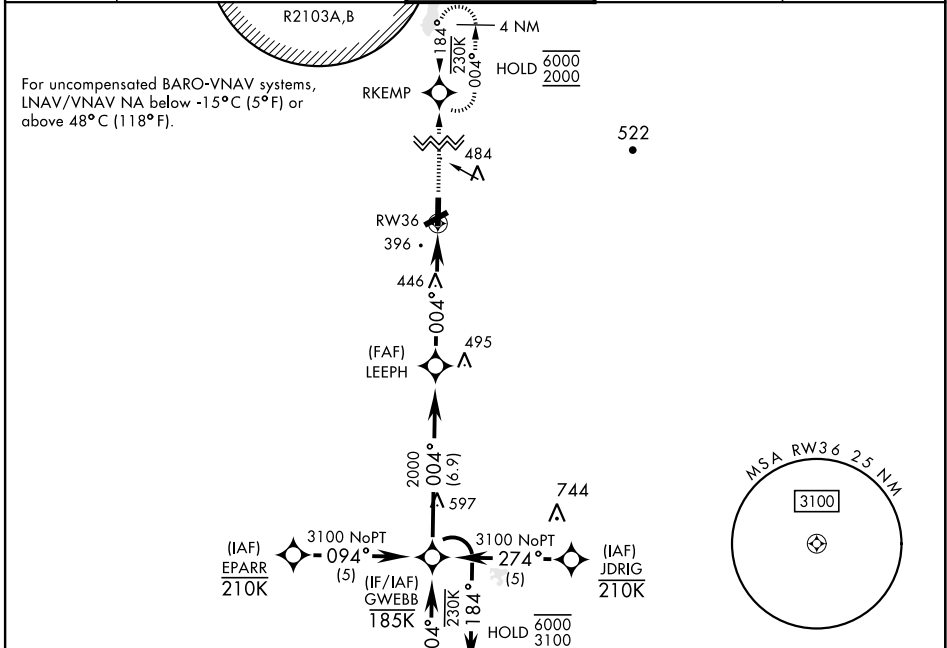
CAIRNS AAF (KOZR)

RNP APCH - GPS

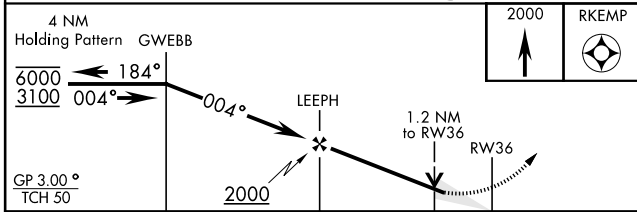
\* Circling to rwy 24 NA at night.  
Visibility reduction by helicopters NA.

MISSED APPROACH: Climb to 2000 direct RKEMP and hold.

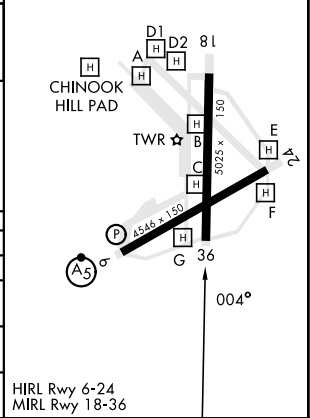
ATIS <b>111.2</b> <b>316.15</b>	APP CON * 021°-120° <b>125.4</b> <b>327.125</b> 121°-219° <b>133.75</b> <b>270.35</b> 220°-340° <b>133.45</b> <b>239.275</b> 341°-020° <b>121.1</b> <b>319.25</b>	TOWER * <b>135.2</b> (CTAF) <b>248.55</b>	GND CON * <b>121.9</b> <b>288.25</b>	CLNC DEL * <b>118.075</b> <b>380.1</b>
---------------------------------------	---	---	--	--



ELEV	301	TDZE	298
------	-----	------	-----



ELEV	301	TDZE	298
------	-----	------	-----



CATEGORY	A	B	C	D
LPV DA	565-7 $\frac{5}{8}$		267	(300-7 $\frac{5}{8}$ )
LNAV/VNAV DA	634-1		336	(400-1)
LNAV MDA	740-1	442 (500-1)	740-1 $\frac{5}{8}$	442 (500-1 $\frac{5}{8}$ )
CIRCLING *	780-1 479 (500-1)	820-1 519 (600-1)	900-1 $\frac{1}{2}$ 599 (600-1 $\frac{1}{2}$ )	900-2 599 (600-2)

HIRL Rwy 6-24  
MIRL Rwy 18-36

# RNAV (GPS) RWY 36

SE-4, 11 JUL 2024 to 08 AUG 2024

SE-4, 11 JUL 2024 to 08 AUG 2024