

FORT NOVOSHEL, ALABAMA

RNAV (GPS) RWY 6

SBAS CH 50537 W06A	APCH CRS 064°	Rwy Idg TDZE Arprt Elev 4546 298 301	[USA]	CAIRNS AAF (KOZR)
--	-------------------------	--	-------	-------------------

RNP APCH - GPS

* When ALS inop, increase RVR to 40, vis to 3/4 mile.
 ** When ALS inop, increase RVR to 45, vis to 7/8 mile.
 *** When ALS inop, increase CAT AB RVR to 55, vis to 1 mile;
 CAT CD vis to 1 1/4 miles.
 **** Circling not authorized to Rwy 24 at night. Circling
 visibility reduction by helicopters not authorized.

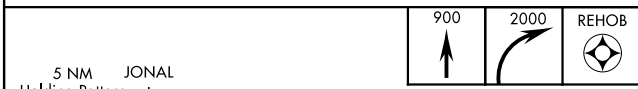
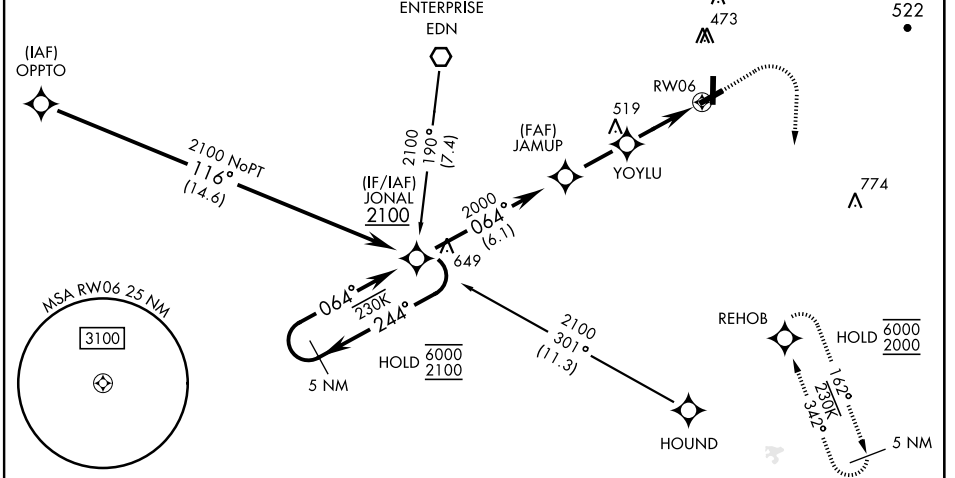


MISSED APPROACH: Climb to 900 then climbing right turn to 2000 direct REHOB and hold.

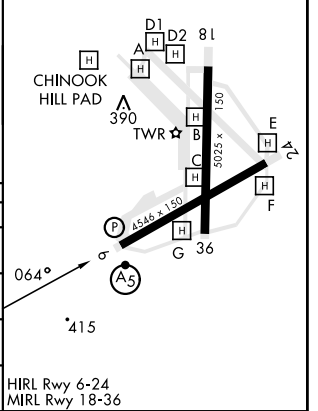
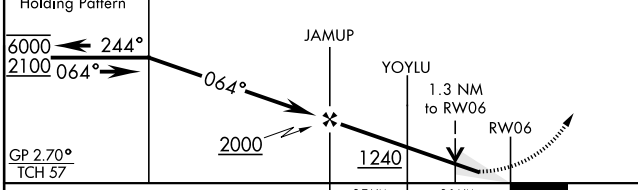
ATIS 111.2 316.15	APP CON ★ 021°-120° 125.4 327.125 121°-219° 133.75 270.35 220°-340° 133.45 239.275 341°-020° 121.1 319.25	TOWER ★ 135.2 (CTAF) 248.55	GND CON ★ 121.9 288.25	CLNC DEL★ 118.075 380.1
---------------------------------------	---	---	--	---

For uncompensated Baro-VNAV systems, LNAV/VNAV NA below -1°C or above 54°C.

Procedure not authorized for arrivals at HOUND on V241 NE bound.



ELEV	301	TDZE	298
------	-----	------	-----



CATEGORY	A	B	C	D
LPV DA*	498/24	200	(200-1/2)	
LNAV/VNAV DA**	585/24	287	(300-1/2)	
LNAV MDA***	720/24 422 (500-1/2)	720/40 422 (500-3/4)		
CIRCLING****	780-1 479 (500-1)	820-1 519 (600-1)	900-1 1/2 599 (600-1 1/2)	900-2 599 (600-2)

FORT NOVOSHEL, ALABAMA 31° 17' N-85° 43' W CAIRNS AAF (KOZR)

Amdt 2 23MAR23

RNAV (GPS) RWY 6

SE-4, 11 JUL 2024 to 08 AUG 2024

SE-4, 11 JUL 2024 to 08 AUG 2024