

LOC/DME I-SZI <b>111.7</b> Chan <b>54</b>	APP CRS <b>164°</b>	Rwy Idg <b>9426</b> TDZE <b>430</b> Apt Elev <b>432</b>
---	------------------------	---

ILS RWY 16C (SA CAT I)  
SEATTLE-TACOMA INTL (SEA)

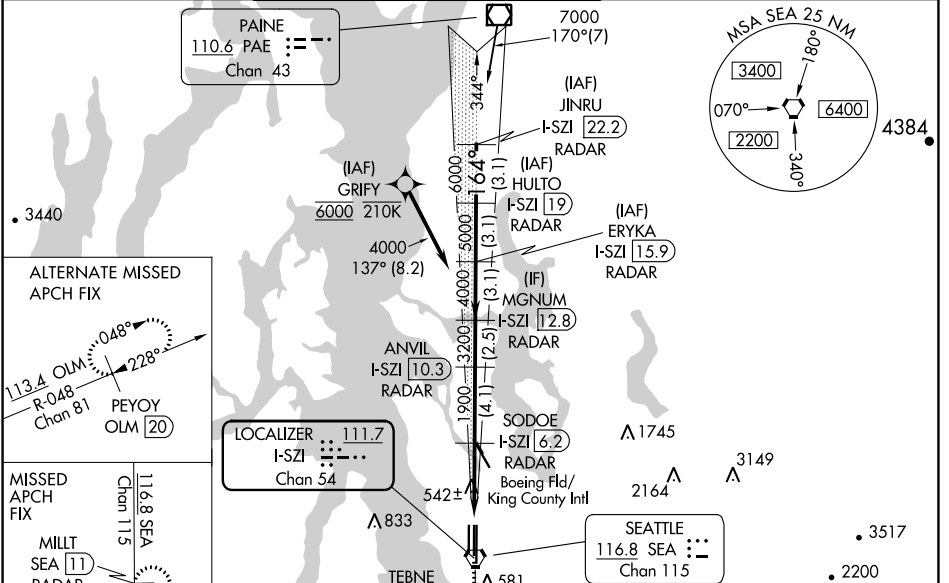
DME or RADAR required. From GRIFY: RNAV 1-GPS required.

MISSED APPROACH: Climb on heading 160° and SEA VORTAC R-161 to cross TEBNE/SEA 2.4 DME/RADAR at or below 2000, then climb to 5000 on SEA VORTAC R-161 to MILLT/SEA 11 DME/RADAR and hold, continue climb-in-hold to 5000.

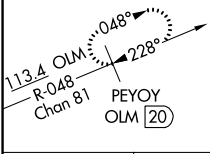
Simultaneous approach authorized with Rwy 16R. Simultaneous operations require use of vertical guidance, maintain last assigned altitude until established on glideslope. Requires specific OPSPEC, MSPEC or LOA approval and use of HUD to DH.



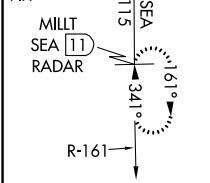
D-ATIS <b>118.0</b>	SEATTLE APP CON <b>133.65 273.45</b>	SEATTLE TOWER <b>119.9 239.3</b> (Rwys 16L, 16C, 34C, 34R) <b>120.95 239.3</b> (Rwys 16R, 34L)	GND CON <b>121.7</b>	CLNC DEL <b>128.0</b>	CPDLC
------------------------	---	--	-------------------------	--------------------------	-------



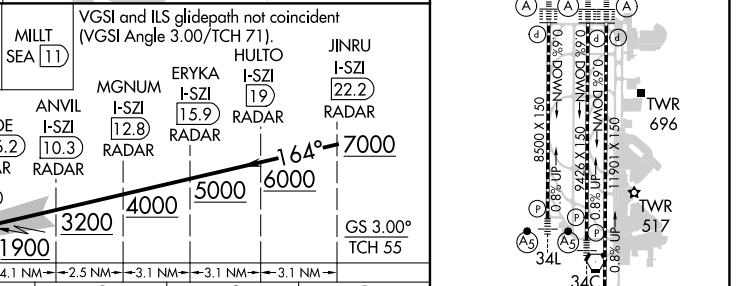
ALTERNATE MISSED APCH FIX



MISSED APCH FIX



SEA R-161 hdg 160°	TEBNE SEA 2.4 2000	5000 SEA R-161	MILLT SEA 11
--------------------	--------------------	----------------	--------------



CATEGORY	A	B	C	D
S-ILS 16C	RA 292/14 150 DA 580			

SA CATEGORY I ILS - SPECIAL AIRCREW & AIRCRAFT CERTIFICATION REQUIRED

NW-1, 11 JUL 2024 to 08 AUG 2024

NW-1, 11 JUL 2024 to 08 AUG 2024