

LOC/DME I-SNQ 110.3 Chan 40	APP CRS 164°	Rwy Idg TDZE 432 Apt Elev 432	11901
--	------------------------	---	--------------

ILS RWY 16L (CAT II & III)

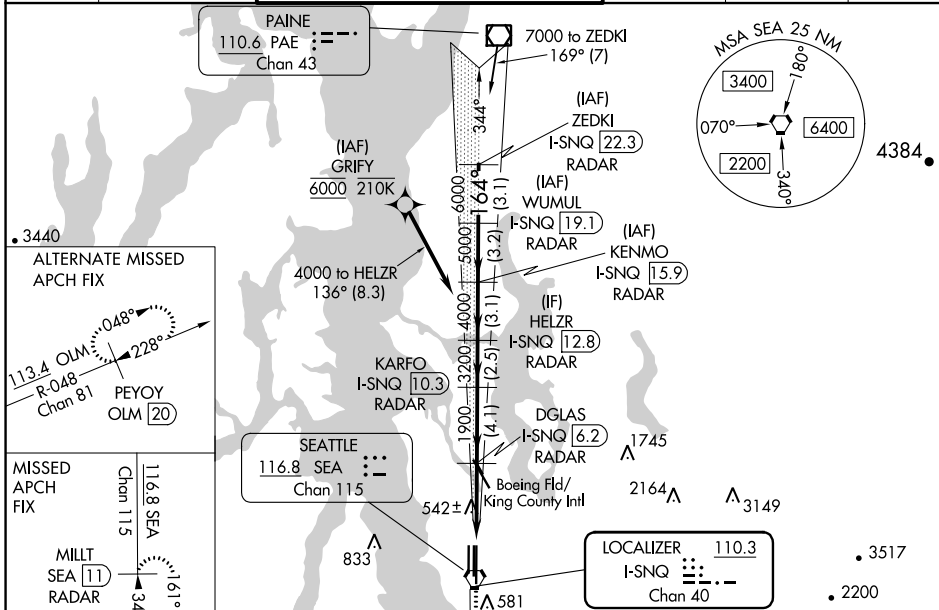
SEATTLE-TACOMA INTL (SEA)

DME or RADAR required. RNP APCH-GPS, from GRIFY.

Simultaneous approach authorized. Cat II: RVR 1000 authorized with specific OPSPEC, MSPEC, or LOA approval and use of Autoland or HUD to touchdown.

MISSED APPROACH: Climb to 900 on heading 165° then on SEA VORTAC R-161 to cross TEBNE/SEA 2.4 DME/RADAR at or below 2000 then climb to 5000 on SEA VORTAC R-161 to MILLT/SEA 11 DME/RADAR and hold, continue climb-in-hold to 5000.

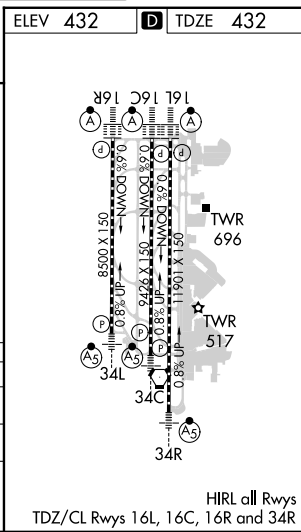
D-ATIS 118.0	SEATTLE APP CON 133.65 273.45	SEATTLE TOWER 119.9 239.3 (Rwys 16L, 16C, 34C, 34R) 120.95 239.3 (Rwys 16R, 34L)	GND CON 121.7	CLNC DEL 128.0	CPDLC
------------------------	---	--	-------------------------	--------------------------	-------



900 hgd 165°	SEA R-161	TEBNE SEA 2.4 2000	MILLT SEA 11	VGSI and ILS glidepath not coincident (VGSI Angle 3.00/TCH 76).	ZEDKI I-SNQ 22.3 RADAR
					WUMUL I-SNQ 19.1 RADAR
					KENMO I-SNQ 15.9 RADAR
					HELZR I-SNQ 12.8 RADAR
					KARFO I-SNQ 10.3 RADAR
					DGLAS I-SNQ 6.2 RADAR
					TEBNE SEA 2.4 RADAR 2000

CATEGORY	A	B	C	D
S-ILS 16L	NA	CAT II RA 176/12 100	DA 532	
S-ILS 16L	NA	CAT III RVR 03		

CATEGORY II & III ILS - SPECIAL AIRCREW & AIRCRAFT CERTIFICATION REQUIRED



NW-1, 11 JUL 2024 to 08 AUG 2024

NW-1, 11 JUL 2024 to 08 AUG 2024