

RNAV (RNP) Z RWY 16C

SEATTLE-TACOMA INTL (SEA)

APP CRS	Rwy Idg	9426
164°	TDZE	430
	Apt Elev	433

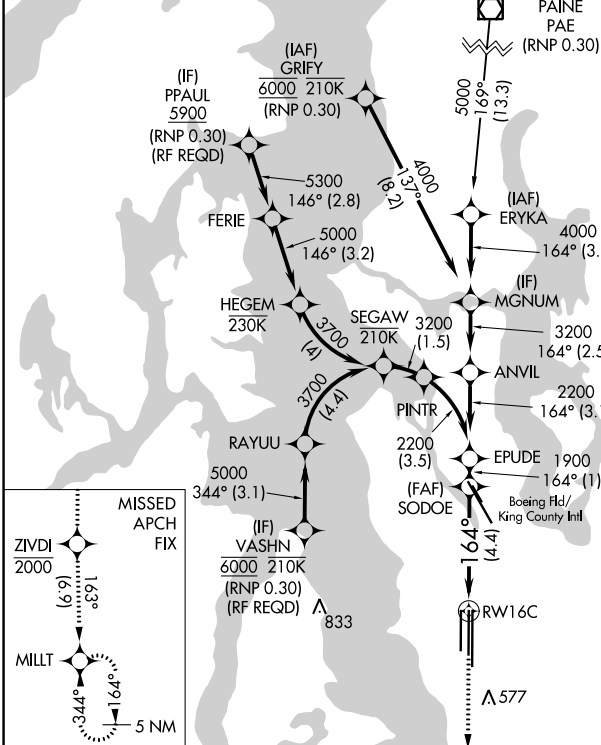
▽ For uncompensated Baro-VNAV systems, procedure NA below -6°C (22°F) or above 54°C (130°F). GPS required. See additional requirements on adjacent information page. For inop ALS, increase RNP 0.12 all Cats visibility to RVR 5200, and increase RNP 0.30 all Cats visibility to 1 3/8 SM.

SEATTLE TOWER
 (Rwys 16L, 16C, 34C, 34R)
119.9 239.3
120.95 239.3 (Rwys 16R, 34L)

ALSF-2

MISSED APPROACH: Climb direct ZIVDI to cross ZIVDI at or below 2000, then climb to 5000 on track 163° to MILLT and hold, continue climb-in-hold to 5000.

GND CON	CLNC DEL	CPDLC
121.7	128.0	

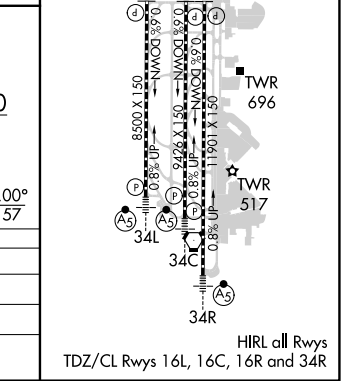
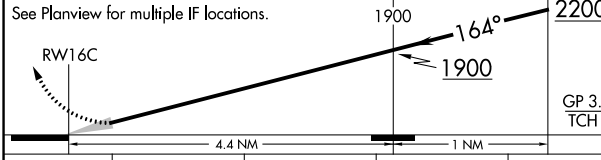
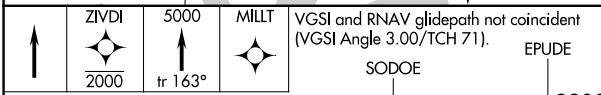


MSA RW16C 25 NM
6400

RADAR REQUIRED

△ 1745
 △ 2164
 △ 3149

△ 577



CATEGORY	A	B	C	D
RNP 0.12 DA		758/29	328 (400-%)	
RNP 0.30 DA		834/43	404 (500-%)	

AUTHORIZATION REQUIRED

NW-1, 11 JUL 2024 to 08 AUG 2024

NW-1, 11 JUL 2024 to 08 AUG 2024