

LOC I-ILN <b>110.7</b>	APP CRS <b>224°</b>	Rwy Idg <b>10701</b>
		TDZE <b>1077</b>
		Apt Elev <b>1077</b>

# ILS or LOC RWY 22R

WILMINGTON AIR PARK (ILN)

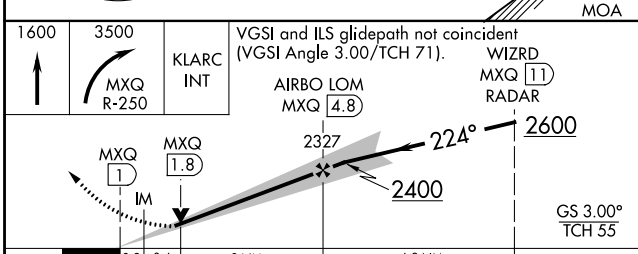
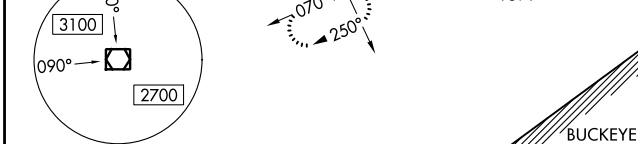
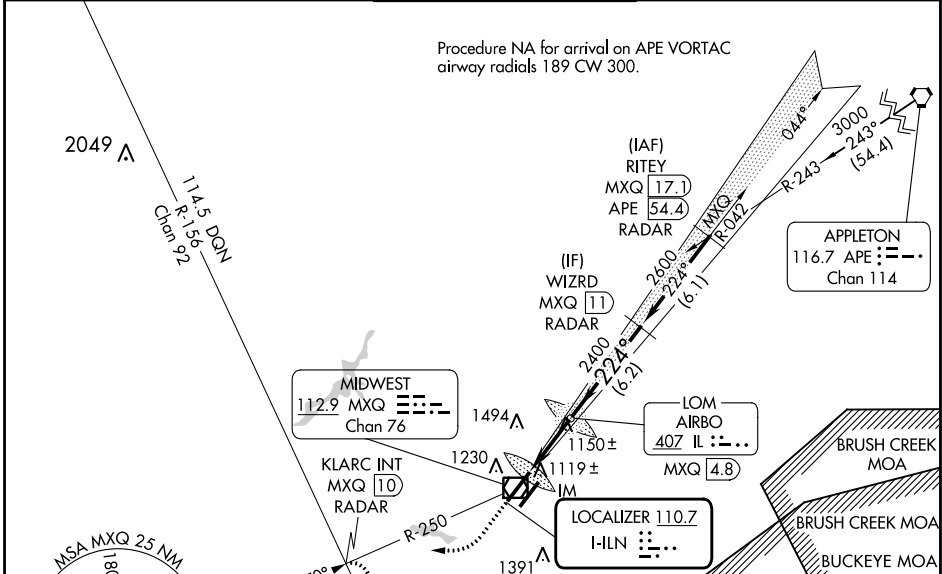
DME or RADAR required for procedure entry.  
ADF or DME required for LOC only.

**ALSF-2**

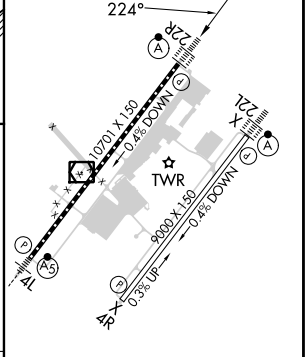
MISSED APPROACH: Climb to 1600 then climbing right turn to 3500 on MXQ VOR/DME to KLARC INT/MXQ 10 DME/RADAR and hold, continue climb-in-hold to 3500.

Simultaneous approach authorized. DME from MXQ VOR/DME.  
DME use requires simultaneous reception of I-ILN and MXQ DME.

D-ATIS <b>124.925</b>	COLUMBUS APP CON <b>118.85 269.275</b>	WILMINGTON TOWER <b>119.475</b>	GND CON <b>121.6</b>	CLNC DEL <b>128.85</b>
--------------------------	---	------------------------------------	-------------------------	---------------------------



ELEV 1077	TDZE 1077
-----------	-----------



CATEGORY	A	B	C	D
S-ILS 22R	1277/18		200 (200-½)	
S-LOC 22R	1400/24	323 (400-½)	1400/26	323 (400-½)
CIRCLING	1560-1	483 (500-1)	1860-2¼ 783 (800-2¼)	1860-2½ 783 (800-2½)

TDZ/CL Rwys 22L and 22R HIRL Rwys 4L-22R and 4R-22L					
FAF to MAP 3.8 NM					
Knots	60	90	120	150	180
Min:Sec	3:48	2:32	1:54	1:31	1:16

EC-2, 11 JUL 2024 to 08 AUG 2024

EC-2, 11 JUL 2024 to 08 AUG 2024