

WAAS CH <b>72818</b> <b>W35A</b>	APP CRS <b>354°</b>	Rwy Idg TDZE Apt Elev	<b>5593</b> <b>1067</b> <b>1073</b>
--	------------------------	-----------------------------	---

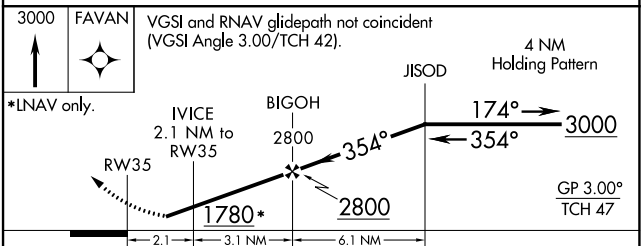
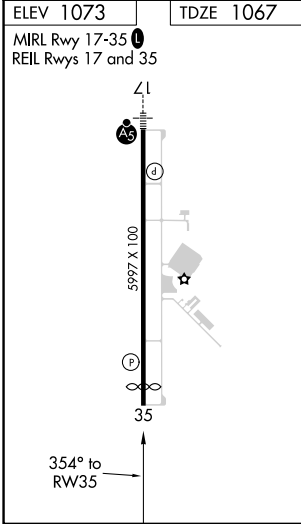
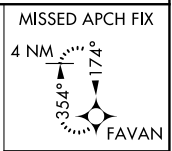
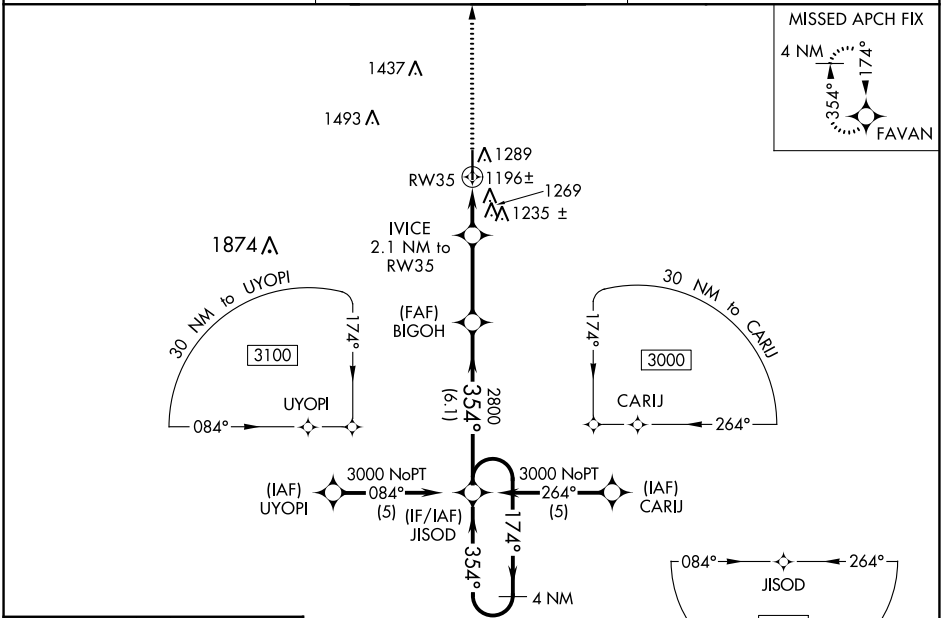
# RNAV (GPS) RWY 35

SHAWNEE RGNL (SNL)

**⚠** Baro-VNAV NA when using Seminoole altimeter setting. For uncompensated Baro-VNAV systems, LNAV/VNAV NA below -17°C (2°F) or above 54°C (130°F). DME/DME RNP-0.3 NA. When local altimeter setting not received, use Seminoole altimeter setting: increase LPV DA to 1357 feet; increase LNAV/VNAV DA to 1605 feet and visibility ¼ SM; increase all MDAs 40 feet and visibility Cat C ¼ SM.

**MISSED APPROACH:**  
Climb to 3000 direct FAVAN and hold.

AWOS-3 <b>118.275</b>	OKE CITY APP CON <b>120.45 288.325</b>	UNICOM <b>122.7 (CTAF)</b>
--------------------------	---	-------------------------------



CATEGORY	A	B	C	D
LPV DA	1317-1	250 (300-1)		NA
LNAV/VNAV DA	1565-1¾	498 (500-1¾)		NA
LNAV MDA	1520-1	453 (500-1)	1520-1¼ 453 (500-1¼)	NA
<b>C</b> CIRCLING	1600-1	527 (600-1)	1640-1½ 567 (600-1½)	NA

SC-1, 11 JUL 2024 to 08 AUG 2024

SC-1, 11 JUL 2024 to 08 AUG 2024