

WAAS CH <b>56341</b> <b>W15A</b>	APP CRS <b>155°</b>	Rwy Idg TDZE <b>5523</b> Apt Elev <b>5551</b>
--	------------------------	---

# RNAV (GPS) RWY 15

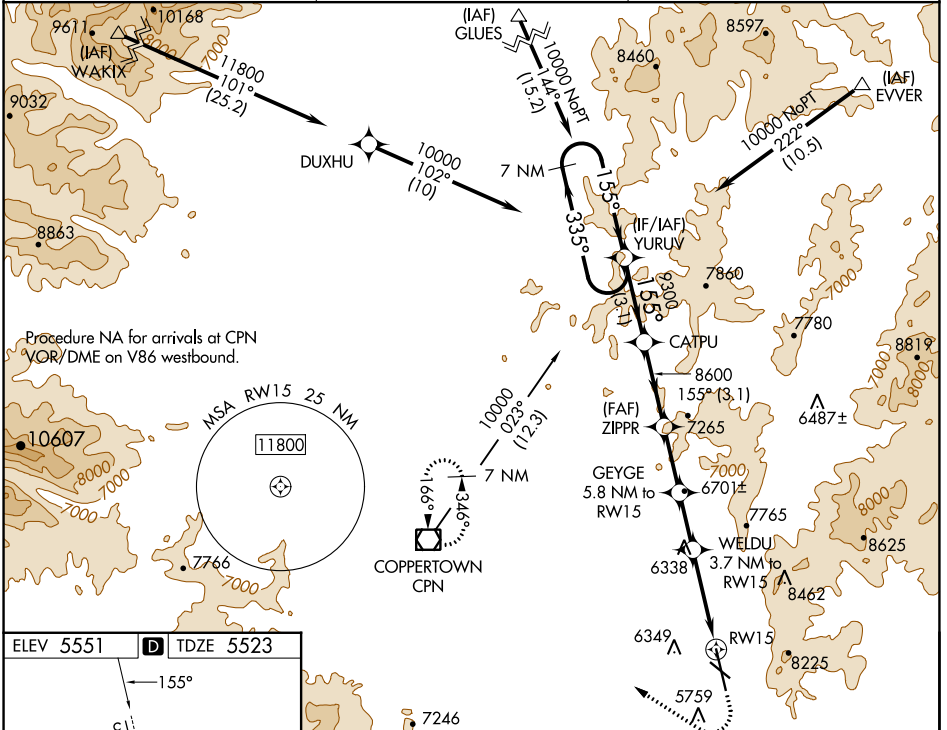
BERT MOONEY (BTM)

**⚠** Circling NA northeast of Rwy 15-33. DME/DME RNP-0.3 NA. For Inop ALS, increase LPV all Cats visibility to 2½ SM, increase LPV# Cat C/D visibility to ¾ SM. Inop table does not apply to LNAV Cats C/D.

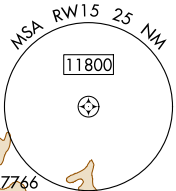
**MALS R**  
AS

**MISSED APPROACH:** (Do not exceed 190K until 7100) Climb to 7100 then climbing right turn to 11000 direct CPN VOR/DME and hold, continue climb-in-hold to 11000. #Missed approach requires minimum climb of 365 feet per NM to 8700.

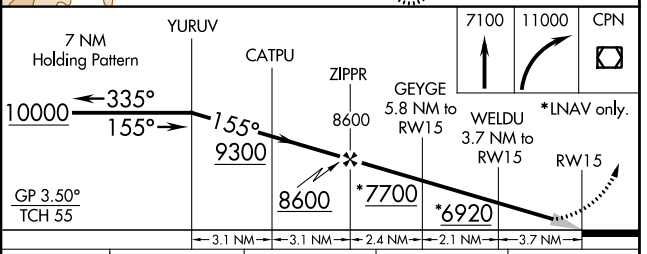
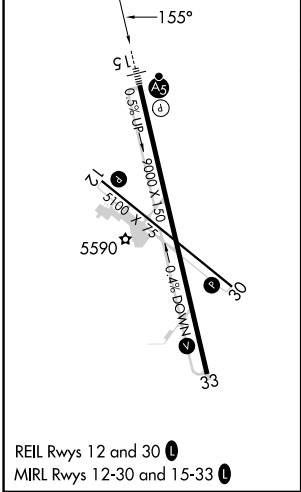
ASOS <b>135.175</b>	SALT LAKE CENTER <b>132.4 338.3</b>	UNICOM <b>123.0 (CTAF)</b>
------------------------	--	-------------------------------



Procedure NA for arrivals at CPN VOR/DME on V86 westbound.



ELEV 5551	<b>D</b>	TDZE 5523
-----------	----------	-----------



CATEGORY	A	B	C	D
LPV DA	6281-1⅞ 758 (800-1⅞)			
LPV DA#	5825-½ 302 (300-½)			
LNAV MDA	6780-¾ 1257 (1300-¾)	6780-1 1257 (1300-1)	6780-3 1257 (1300-3)	1257 (1300-3)
<b>C</b> CIRCLING	6780-1¼ 1229 (1300-1¼)		7060-3 1509 (1600-3)	7120-3 1569 (1600-3)

NW-1, 11 JUL 2024 to 08 AUG 2024

NW-1, 11 JUL 2024 to 08 AUG 2024