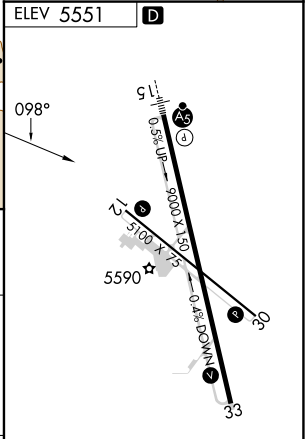
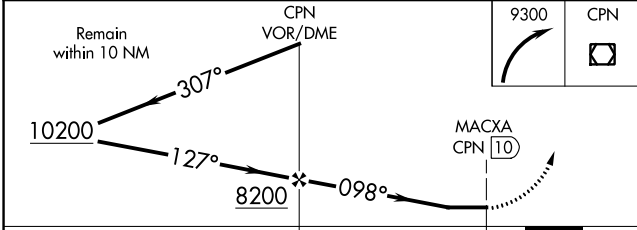
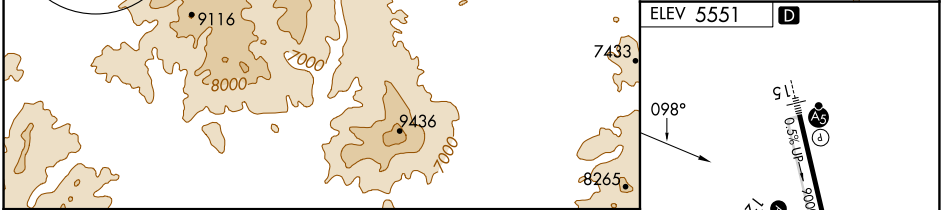
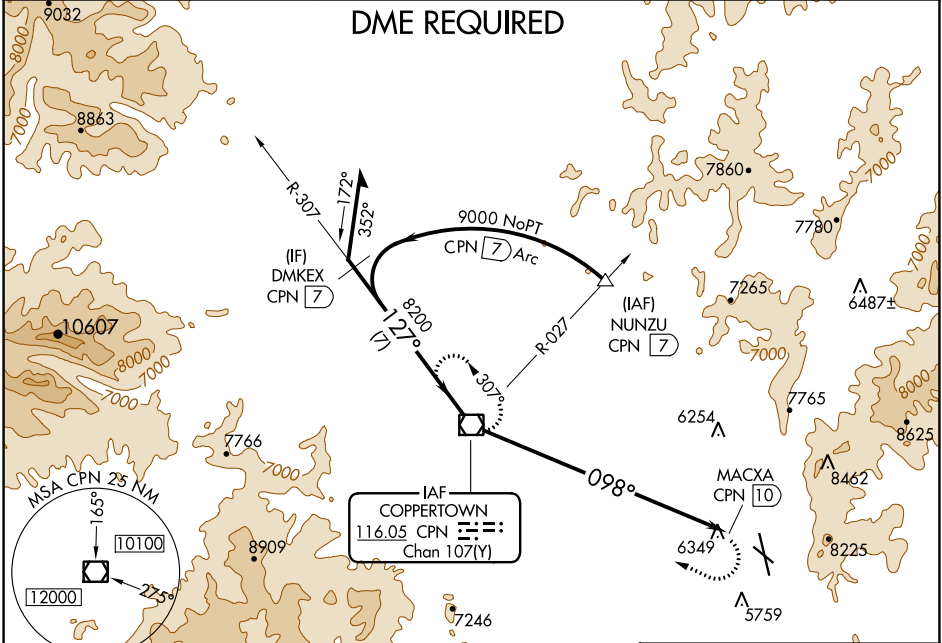


VOR/DME CPN <b>116.05</b> Chan <b>107(Y)</b>	APP CRS <b>098°</b>	Rwy Idg TDZE Apt Elev <b>N/A</b> <b>N/A</b> <b>5551</b>
--	------------------------	--

**VOR-A**  
BERT MOONEY (BTM)

DME required. Circling NA northeast of Rwy 15-33.	MISSED APPROACH: Climbing right turn to 9300 direct CPN VOR/DME and hold.
--	---

ASOS <b>135.175</b>	SALT LAKE CENTER <b>132.4 338.3</b>	UNICOM <b>123.0(CTAF)</b>
------------------------	--	------------------------------



CATEGORY	A	B	C	D
CIRCLING	7120-1¼ 1569 (1600-1¼)	7120-1½ 1569 (1600-1½)	7120-3 1569 (1600-3)	7140-3 1589 (1600-3)

REIL Rwy 12 and 30   
MRL Rwy 12-30 and 15-33

NW-1, 11 JUL 2024 to 08 AUG 2024

NW-1, 11 JUL 2024 to 08 AUG 2024