

WAAS CH <b>70621</b> <b>W13A</b>	APP CRS <b>124°</b>	Rwy Idg TDZE Apt Elev	<b>6401</b> <b>3884</b> <b>3933</b>
--	------------------------	-----------------------------	---

# RNAV (GPS) RWY 13

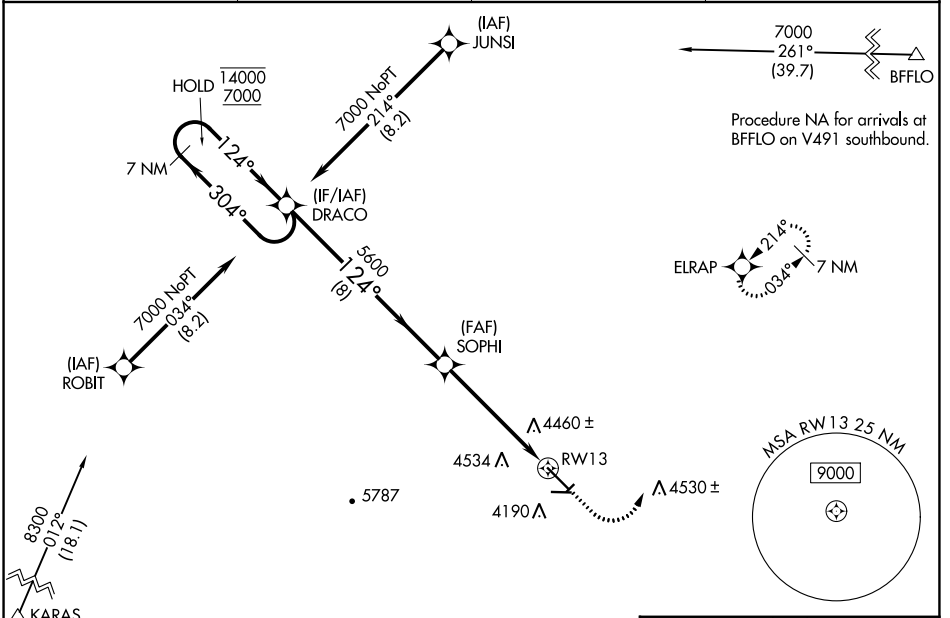
BLACK HILLS-CLYDE ICE FLD (SPF)

**RNP APCH.**

**⚠** Circling NA to Rwy's 4, 8, 22 and 26. Rwy 13 helicopter visibility reduction below 3/4 SM NA. For uncompensated Baro-VNAV systems, LNAV/VNAV NA below -22°C or above 54°C.

**⚠** MISSED APPROACH: Climb to 4600 then climbing left turn to ELRAP and hold, continue climb-in-hold to 7000.

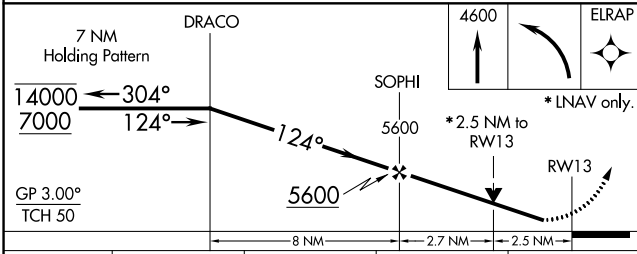
AWOS-3 <b>118.325</b>	ELLSWORTH APP CON* <b>119.5 259.1</b>	GCO <b>121.725</b>	UNICOM <b>122.7 (CTAF)</b> <b>📻</b>
--------------------------	--	-----------------------	--



NC-1, 11 JUL 2024 to 08 AUG 2024

NC-1, 11 JUL 2024 to 08 AUG 2024

ELEV 3933	TDZE 3884
-----------	-----------



CATEGORY	A	B	C	D
LPV DA	4219-1 1/8	335 (300-1 1/8)		NA
LNAV/VNAV DA	4852-4	968 (1000-4)		NA
LNAV MDA	4720-1 836 (800-1)	4720-1 1/4 836 (800-1 1/4)	4720-2 1/2 836 (800-2 1/2)	NA
<b>📻</b> CIRCLING	4760-1 1/4 827 (900-1 1/4)	4920-1 1/2 987 (1000-1 1/2)	5540-3 1607 (1700-3)	NA

