

NDB GTP <b>245</b>	APP CRS <b>225°</b>	Rwy ldg <b>5504</b>
		TDZE <b>242</b>
		Apt Elev <b>264</b>

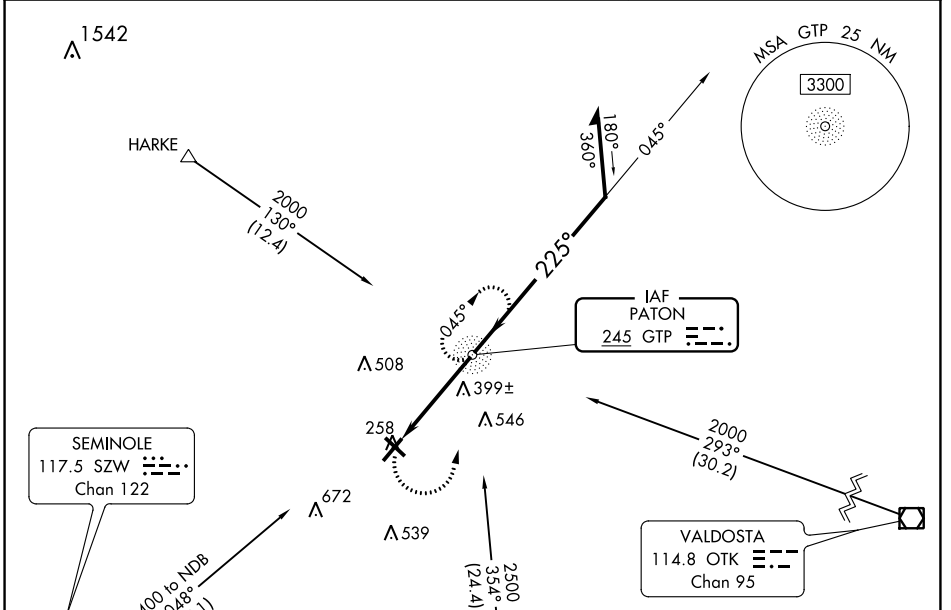
# NDB RWY 22

THOMASVILLE RGNL (TVI)

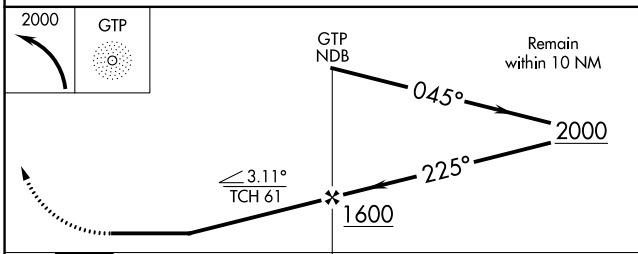
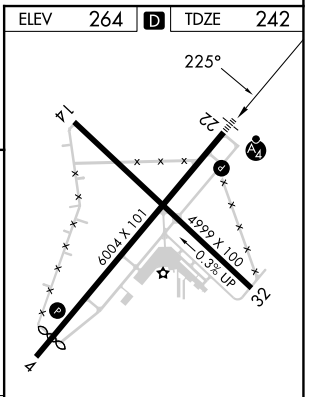
**⚠** When local altimeter setting not received, use Valdosta altimeter setting and increase all MDA 100 feet, increase S-22 Cats C/D visibility 3/4 SM and Circling Cats C/D visibility 1/4 SM. For inop ALS, increase S-22 Cats C/D visibility to 1 3/4 SM. For inop ALS when using the Valdosta altimeter setting, increase S-22 Cat D visibility to 1 1/2 SM. Circling Rwy 4, 14, 32 NA at night.

**MALSF** **MISSED APPROACH:** Climbing left turn to 2000 direct GTP NDB and hold, continue climb-in-hold to 2000.

AWOS-3PT <b>119.175</b>	VALDOSTA APP CON * <b>126.6 285.6</b>	UNICOM <b>123.075 (CTAF)</b>
----------------------------	--	---------------------------------



ELEV 264	<b>D</b>	TDZE 242
----------	----------	----------



CATEGORY	A	B	C	D
S-22	700-3/4	458 (500-3/4)	700-1	458 (500-1)
<b>C</b> CIRCLING	700-1 436 (500-1)	800-1 536 (600-1)	900-1 3/4 636 (700-1 3/4)	1040-2 1/2 776 (800-2 1/2)

LIRL Rwy 14-32  
HIRL Rwy 4-22

FAF to MAP 4 NM

Knots	60	90	120	150	180
Min:Sec	4:00	2:40	2:00	1:36	1:20

SE-4, 11 JUL 2024 to 08 AUG 2024

SE-4, 11 JUL 2024 to 08 AUG 2024