

LOC I-HUF 109.7	APP CRS 049°	Rwy Idg TDZE Apt Elev	9020 573 589
---------------------------	------------------------	-----------------------------	---

ILS or LOC RWY 5

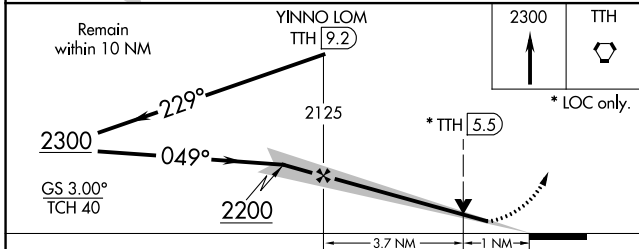
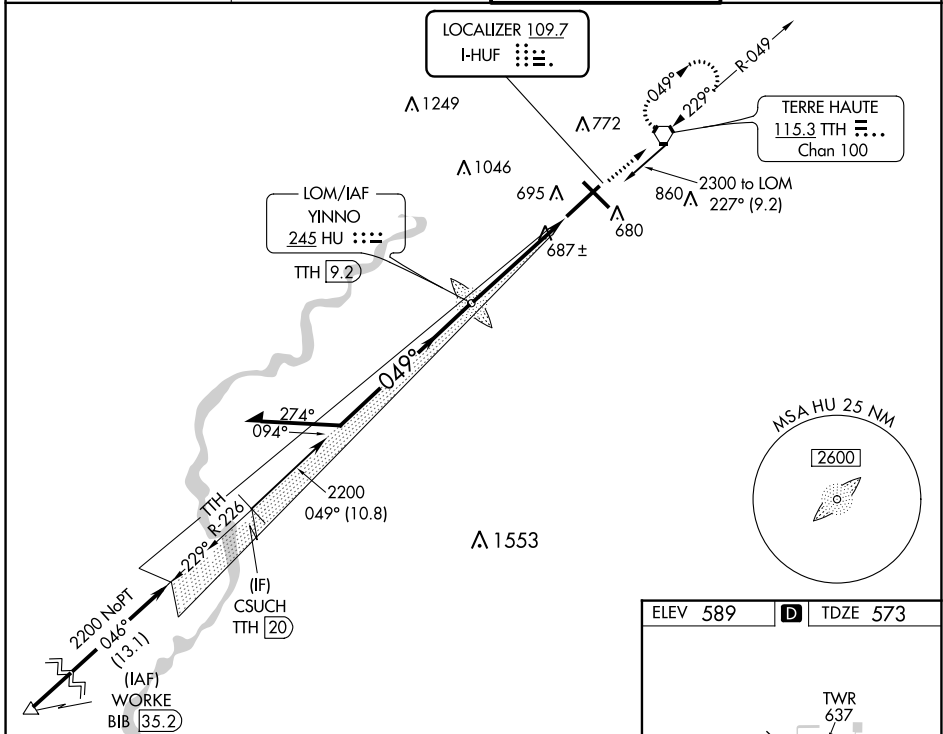
TERRE HAUTE RGNL (HUF)

ADF or DME required.

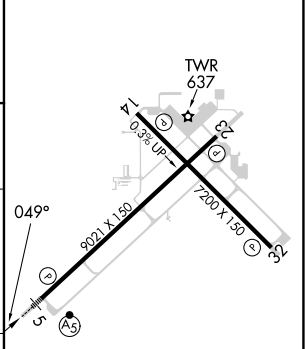
VDP NA when using Paris altimeter setting. When local altimeter setting not received, use Paris altimeter setting and increase all DA 61 feet and all MDA 80 feet, increase S-LOC 5 Cats C/D visibility to RVR 4500. For inop ALS, increase S-LOC 5 Cat C/D visibility to RVR 5500, when using Paris altimeter setting increase S-ILS 5 all Cats visibilities to RVR 4500 and S-LOC Rwy 5 all Cats visibility 1/2 SM. **RVR 1800 authorized with use of FD or AP or HUD to DA, NA when using Paris altimeter setting.

MALS MISSED APPROACH: Climb to 2300 direct TTH VORTAC and hold.

ATIS 127.5 269.375	HULMAN APP CON 125.45 339.8	HULMAN TOWER 134.725 322.475	GND CON 121.6 348.6
------------------------------	---------------------------------------	--	-------------------------------



ELEV 589	D	TDZE 573
----------	----------	----------



CATEGORY	A	B	C	D
S-ILS 5 **		773/24	200 (200-1/2)	
S-LOC 5	940/24	367 (400-1/2)	940/35	367 (400-5/8)
C CIRCLING	1040-1 451 (500-1)	1040-1 451 (500-1)	1220-1 3/4 631 (700-1 3/4)	1220-2 631 (700-2)

REIL Rwy 14, 23 and 32					
HIRL Rwy 5-23 and 14-32					
FAF to MAP 4.7 NM					
Knots	60	90	120	150	180
Min:Sec	4:42	3:08	2:21	1:53	1:34