

APP CRS	Rwy Idg	7200
317°	TDZE	589
	Apt Elev	589

RNAV (GPS) RWY 32

TERRE HAUTE RGNL (HUF)

RNP APCH.

▼ VDP NA when using Paris altimeter setting. Rwy 32 helicopter visibility reduction below 3/4 SM NA.
 ▲ When local altimeter setting not received, use Paris altimeter setting and increase all MDAs 80 ASR feet, LNAV Cat C/D visibility to 1 3/8 SM and Circling Cat C/D 1/4 SM.

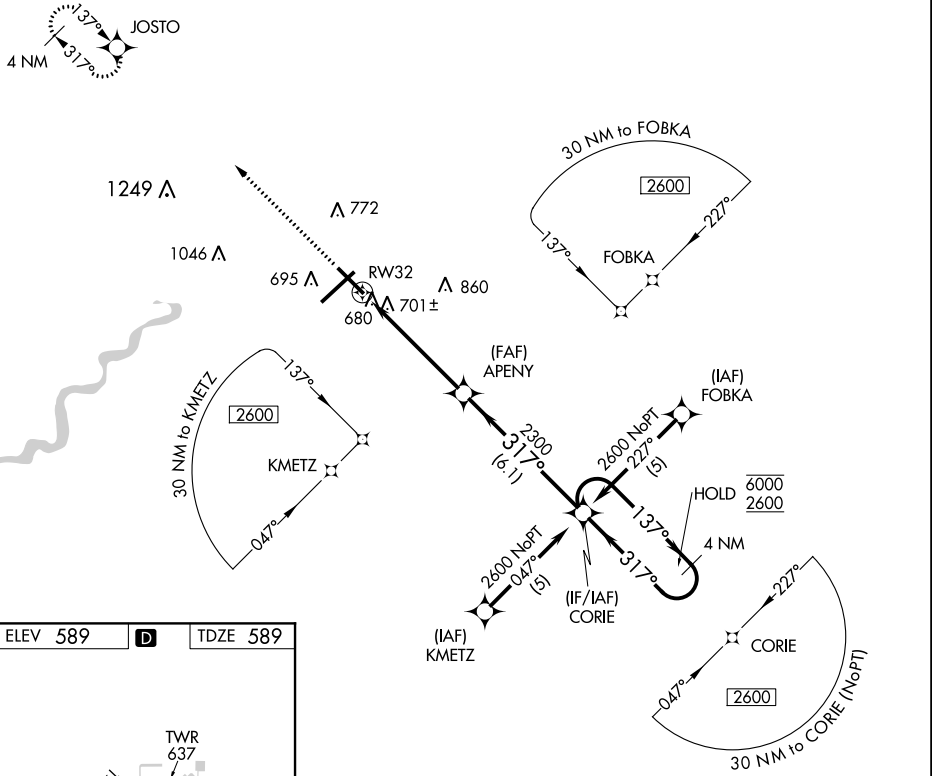
MISSED APPROACH:
 Climb to 2600 direct
 JOSTO and hold.

ATIS
127.5 269.375

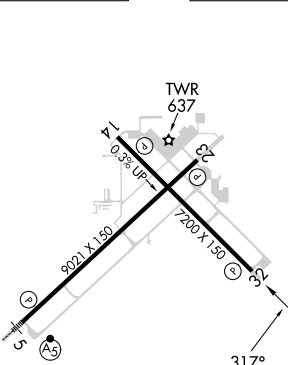
HULMAN APP CON
125.45 339.8

HULMAN TOWER
134.725 322.475

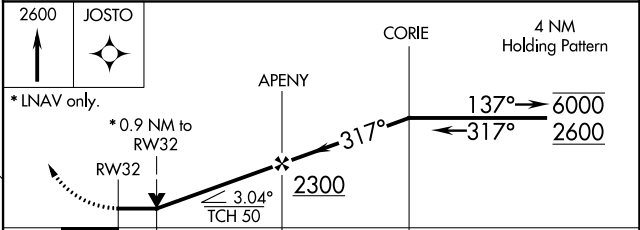
GND CON
121.6 348.6



ELEV 589 **D** TDZE 589



REIL Rwy 14, 23 and 32
HIRL Rwy 5-23 and 14-32



CATEGORY	A	B	C	D
LNAV MDA	980-1	391 (400-1)	980-1 1/8 391 (400-1 1/8)	980-1 1/4 391 (400-1 1/4)
C CIRCLING	1040-1	451 (500-1)	1220-1 3/4 631 (700-1 3/4)	1220-2 631 (700-2)

EC-2, 11 JUL 2024 to 08 AUG 2024

EC-2, 11 JUL 2024 to 08 AUG 2024