

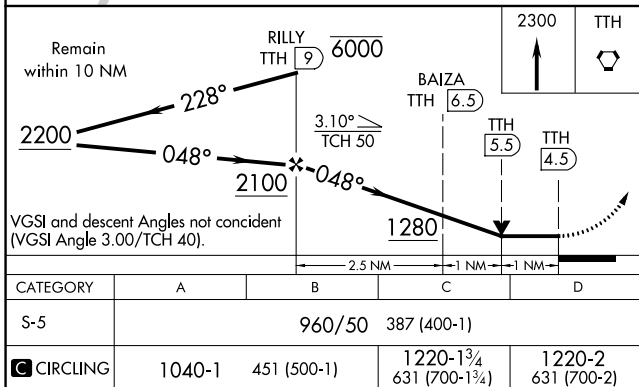
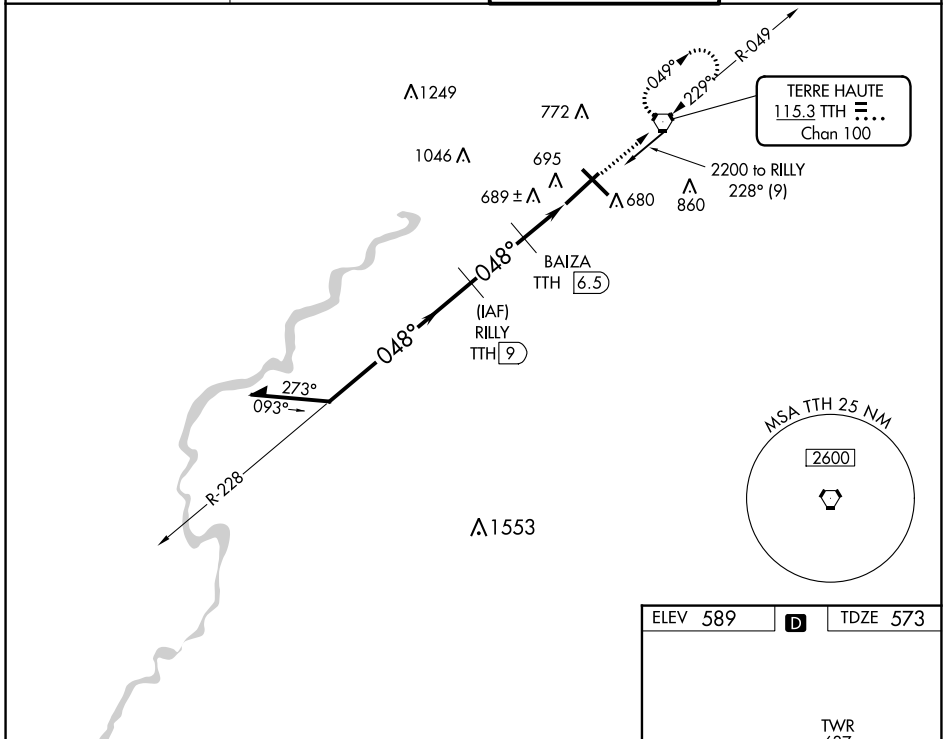
VORTAC TTH <b>115.3</b> Chan <b>100</b>	APP CRS <b>048°</b>	Rwy Idg TDZE Apt Elev	<b>9020</b> <b>573</b> <b>589</b>
---	------------------------	-----------------------------	---

# VOR RWY 5

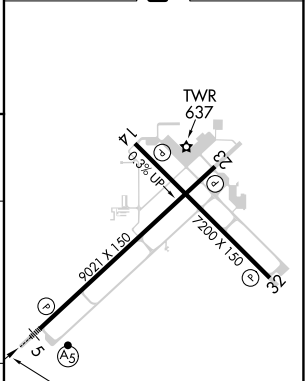
TERRE HAUTE RGNL (HUF)

DME required.		MALSR 	MISSED APPROACH: Climb to 2300 direct TTH VORTAC and hold.
	VDP NA when using Paris, IL altimeter setting. When local altimeter setting not received, use Paris altimeter setting and increase all MDA 80 feet and Circling Cat C/D visibility 1/4 SM. For inop ALS, increase S-5 Cat C/D visibility to RVR 6000. Rwy 5 helicopter visibility reduction below 3/4 SM NA.		

ATIS <b>127.5 269.375</b>	HULMAN APP CON <b>125.45 339.8</b>	HULMAN TOWER <b>134.725 322.475</b>	GND CON <b>121.6 348.6</b>
------------------------------	---------------------------------------	--	-------------------------------



ELEV 589	<b>D</b>	TDZE 573
----------	----------	----------



CATEGORY	A	B	C	D
S-5		960/50	387 (400-1)	
<b>C</b> CIRCLING	1040-1	451 (500-1)	1220-1 3/4 631 (700-1 3/4)	1220-2 631 (700-2)

REIL Rwy 14, 23 and 32  
HIRL Rwy 5-23 and 14-32

EC-2, 11 JUL 2024 to 08 AUG 2024

EC-2, 11 JUL 2024 to 08 AUG 2024