

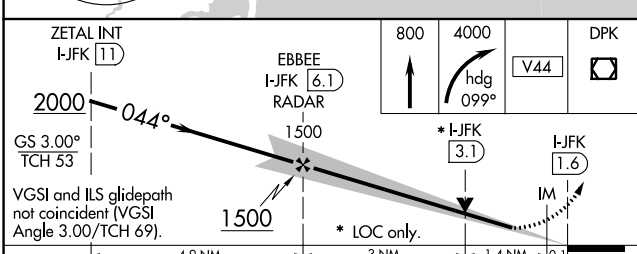
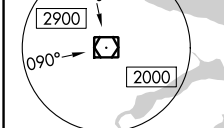
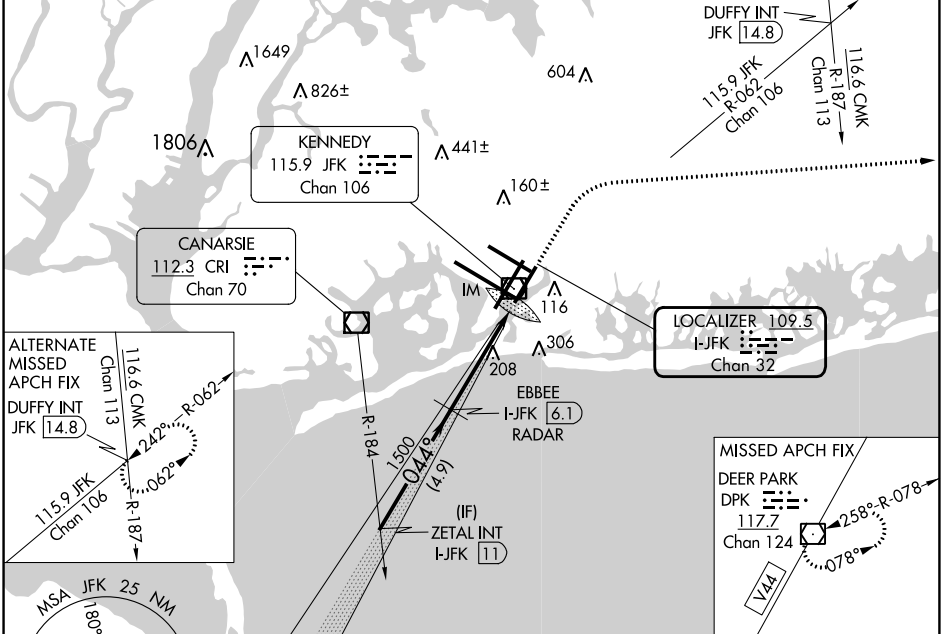
LOC/DME I-JFK	APP CRS	Rwy ldg	8400
109.5	044°	TDZE	12
Chan 32		Apt Elev	13

ILS or LOC RWY 4R

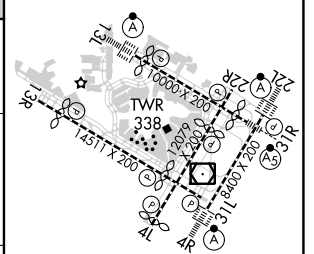
JOHN F KENNEDY INTL (JFK)

RADAR required for procedure entry.		ALSF-2	MISSED APPROACH: Climb to 800 then climbing right turn to 4000 heading 099° and V44 to DPK VOR/DME and hold.		
Simultaneous approach authorized.					

D-ATIS (ARR/DEP) (ARR-NE) (ARR-SW)	NEW YORK APP CON	KENNEDY TOWER		GND CON	CLNC DEL	CPDLC
128.725 117.7 115.4	128.125 269.0	Rwys 4R/22L and 13L/31R	119.1 281.55	121.9 135.05	135.05	
		Rwys 4L/22R and 13R/31L	123.9 281.55	348.6	348.6	



ELEV 13	TDZE 12
RLS Rwys 13L and 13R	
HIRL all Rwys	
TDZ/CL Rwys 4L, 4R, 13L, 22L and 31R	



CATEGORY	A	B	C	D
S-ILS 4R		212/18	200 (200-½)	
S-LOC 4R	540/24	528 (600-½)	540/55	528 (600-1)
CIRCLING	640-1	627 (700-1)	680-1¾ 667 (700-1¾)	680-2 667 (700-2)

FAF to MAP 4.5 NM					
Knots	60	90	120	150	180
Min:Sec	4:30	3:00	2:15	1:48	1:30

NE-2, 11 JUL 2024 to 08 AUG 2024

NE-2, 11 JUL 2024 to 08 AUG 2024