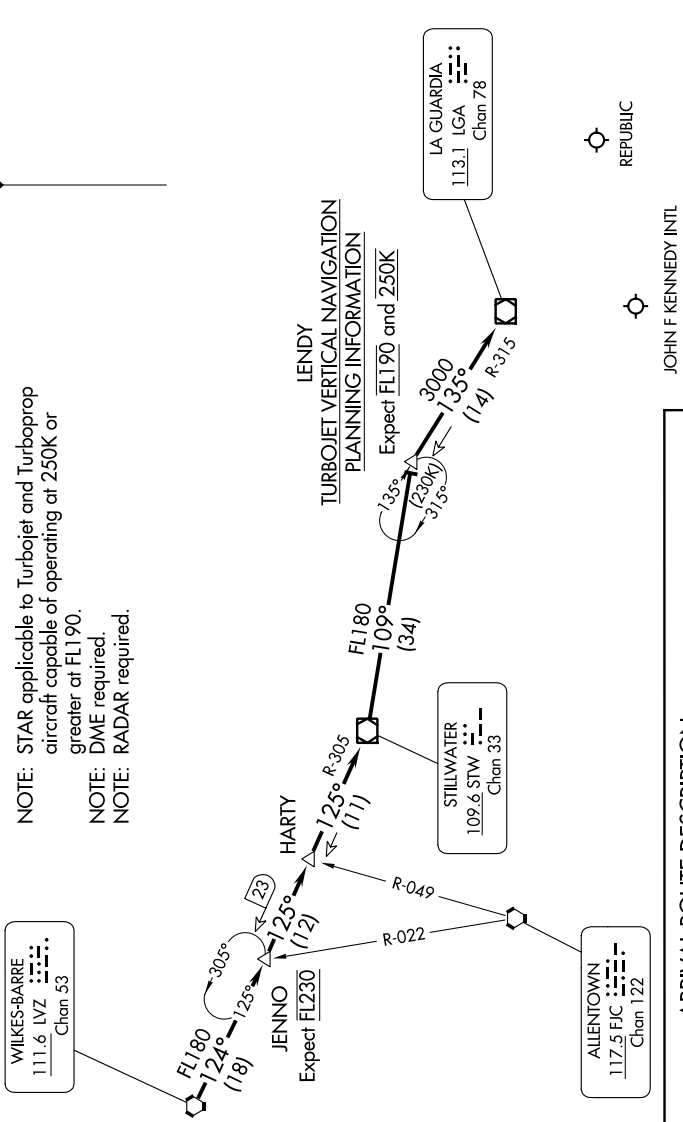


# LENDY EIGHT ARRIVAL

NEW YORK, NEW YORK

NE-2, 11 JUL 2024 to 08 AUG 2024

NEW YORK APP CON  
 128.125 269.0  
 FRG ATIS  
 126.65  
 JFK D-ATIS  
 128.725 (ARR/DEP)  
 117.7 (ARR-NE)  
 115.4 (ARR-SW)



NOTE: STAR applicable to Turbojet and Turboprop aircraft capable of operating at 250K or greater at FL190.  
 NOTE: DME required.  
 NOTE: RADAR required.

LENDY  
 TURBOJET VERTICAL NAVIGATION  
 PLANNING INFORMATION  
 Expect FL190 and 250K

### ARRIVAL ROUTE DESCRIPTION

From over LVZ VORTAC on LVZ R-124 to JENNO INT, then on STW R-305 to HARTY INT, then on STW R-305 to STW VOR/DME, then on STW R-109 to LENDY, then on LGA R-315 to LGA VOR/DME. Expect RADAR vectors to final approach course after LGA VOR/DME.

NOTE: Chart not to scale.

# LENDY EIGHT ARRIVAL

NEW YORK, NEW YORK

NE-2, 11 JUL 2024 to 08 AUG 2024